

Anti-BATF antibody [EPR21911-55] ab236876

リコンビナント **RabMAb**

3 References **画像数 5**

製品の概要

製品名	Anti-BATF antibody [EPR21911-55]
製品の詳細	Rabbit monoclonal [EPR21911-55] to BATF
由来種	Rabbit
アプリケーション	適用あり: Flow Cyt (Intra), ICC/IF, IP, WB
種交差性	交差種: Mouse, Human
免疫原	Recombinant full length protein. This information is proprietary to Abcam and/or its suppliers.
ポジティブ・コントロール	WB: KARPAS-299 and A20 whole cell lysate. ICC/IF: KARPAS-299 cells. Flow Cyt (intra): KARPAS-299 cells. IP: KARPAS-299 cell lysate.
特記事項	<p>This product is a recombinant monoclonal antibody, which offers several advantages including:</p> <ul style="list-style-type: none"> - High batch-to-batch consistency and reproducibility - Improved sensitivity and specificity - Long-term security of supply - Animal-free production <p>For more information see here.</p> <p>Our RabMAb[®] technology is a patented hybridoma-based technology for making rabbit monoclonal antibodies. For details on our patents, please refer to RabMAb[®] patents.</p>

製品の特性

製品の状態	Liquid
保存方法	Shipped at 4°C. Store at +4°C short term (1-2 weeks). Upon delivery aliquot. Store at -20°C long term. Avoid freeze / thaw cycle.
バッファー	<p>pH: 7.2</p> <p>Preservative: 0.01% Sodium azide</p> <p>Constituents: PBS, 40% Glycerol (glycerin, glycerine), 0.05% BSA</p>
精製度	Protein A purified
ポリ/モノ	モノクローナル
クローン名	EPR21911-55
アイソタイプ	IgG

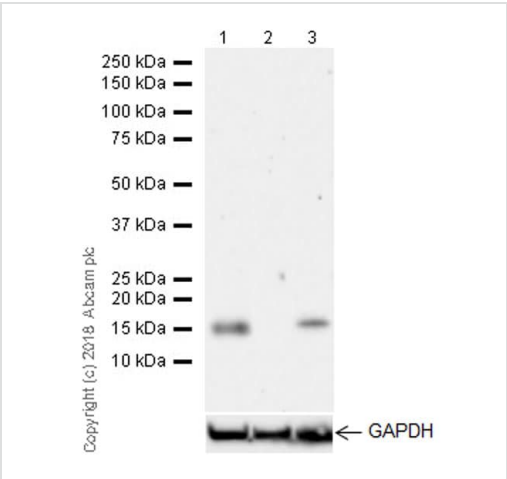
アプリケーション

The Abpromise guarantee **Abpromise保証は、** 次のテスト済みアプリケーションにおけるab236876の使用に適用されます
アプリケーションノートには、推奨の開始希釈率がありますが、適切な希釈率につきましてはご検討ください。

アプリケーション	Abreviews	特記事項
Flow Cyt (Intra)		1/500.
ICC/IF		1/100.
IP		1/30.
WB		1/1000. Detects a band of approximately 15 kDa (predicted molecular weight: 14 kDa).

ターゲット情報

機能	AP-1 family transcription factor that controls the differentiation of lineage-specific cells in the immune system: specifically mediates the differentiation of T-helper 17 cells (Th17), follicular T-helper cells (Tfh), CD8(+) dendritic cells and class-switch recombination (CSR) in B-cells. Acts via the formation of a heterodimer with JUNB that recognizes and binds DNA sequence 5'-TGA[CG]TCA-3'. The BATF-JUNB heterodimer also forms a complex with IRF4 (or IRF8) in immune cells, leading to recognition of AICE sequence (5'-TGAnTCA/GAAA-3'), an immune-specific regulatory element, followed by cooperative binding of BATF and IRF4 (or IRF8) and activation of genes. Controls differentiation of T-helper cells producing interleukin-17 (Th17 cells) by binding to Th17-associated gene promoters: regulates expression of the transcription factor RORC itself and RORC target genes such as IL17 (IL17A or IL17B). Also involved in differentiation of follicular T-helper cells (Tfh) by directing expression of BCL6 and MAF. In B-cells, involved in class-switch recombination (CSR) by controlling the expression of both AICDA and of germline transcripts of the intervening heavy-chain region and constant heavy-chain region ((H)-C(H)). Following infection, can participate in CD8(+) dendritic cell differentiation via interaction with IRF4 and IRF8 to mediate cooperative gene activation. Regulates effector CD8(+) T-cell differentiation by regulating expression of SIRT1. Following DNA damage, part of a differentiation checkpoint that limits self-renewal of hematopoietic stem cells (HSCs): up-regulated by STAT3, leading to differentiation of HSCs, thereby restricting self-renewal of HSCs.
組織特異性	Expressed at highest levels in lung, and at lower levels in placenta, liver, kidney, spleen, and peripheral blood. Detected in SW480 colorectal cancer cell line and several hematopoietic tumor cell lines, including Raji Burkitt's lymphoma. Strongly expressed in mature B- and T-lymphocytes. Also expressed in moderate levels in lymph node and appendix and at low levels in thymus and bone marrow (PubMed:10777209).
配列類似性	Belongs to the bZIP family. Contains 1 bZIP (basic-leucine zipper) domain.
翻訳後修飾	Phosphorylated on serine and threonine residues and at least one tyrosine residue. Phosphorylation at Ser-43 inhibit DNA binding activity and transforms it as a negative regulator of AP-1 mediated transcription. Phosphorylated.
細胞内局在	Nucleus. Cytoplasm. Present in the nucleus and cytoplasm, but shows increased nuclear translocation after activation of T-cells.



Western blot - Anti-BATF antibody [EPR21911-55] (ab236876)

All lanes : Anti-BATF antibody [EPR21911-55] (ab236876) at 1/1000 dilution

Lane 1 : KARPAS-299 (human anaplastic large cell lymphoma) whole cell lysate

Lane 2 : HeLa (human epithelial cell line from cervix adenocarcinoma) whole cell lysate

Lane 3 : A20 (Mouse reticulum sarcoma B lymphocyte cell line) whole cell lysate

Lysates/proteins at 20 µg per lane.

Secondary

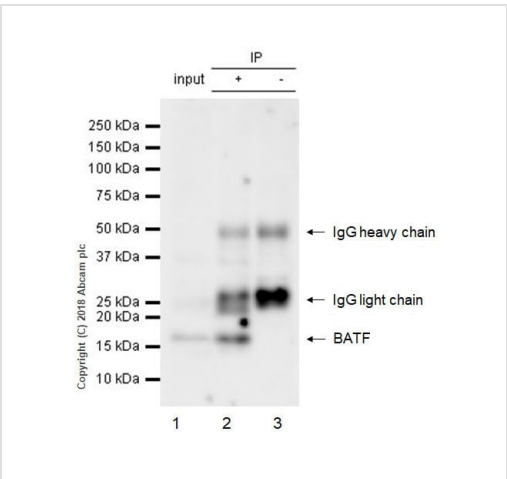
All lanes : Goat Anti-Rabbit IgG H&L (HRP) ([ab97051](#)) at 1/50000 dilution

Predicted band size: 14 kDa

Exposure time: 3 minutes

Blocking/diluting buffer and concentration: 5% NFDM/TBST.

Negative control: HeLa (PMID:8570175).



Immunoprecipitation - Anti-BATF antibody [EPR21911-55] (ab236876)

BATF was immunoprecipitated from 0.35 mg KARPAS-299 (human anaplastic large cell lymphoma) whole cell lysate with ab236876 at 1/30 dilution. Western blot was performed from the immunoprecipitate using ab236876 at 1/500 dilution. VeriBlot for IP Detection Reagent (HRP) ([ab131366](#)), was used for detection at 1/1000 dilution.

Lane 1 : KARPAS-299 (human anaplastic large cell lymphoma) whole cell lysate 10 µg (Input).

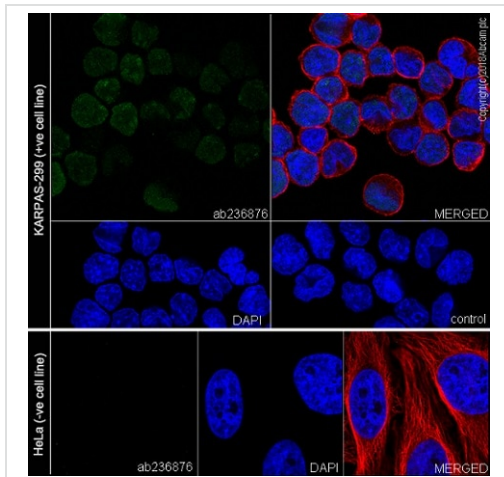
Lane 2 : ab236876 IP in KARPAS-299 whole cell lysate (+).

Lane 3 : Rabbit monoclonal IgG ([ab172730](#)) instead of ab236876 in KARPAS-299 whole cell lysate (-).

Blocking/Dilution buffer and concentration: 5% NFDM/TBST.

Exposure time: 30 seconds.

We used a high sensitivity ECL substrate to develop this blot.



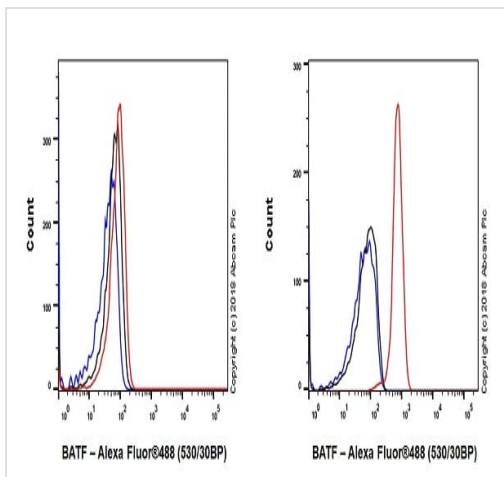
Immunocytochemistry/ Immunofluorescence - Anti-BATF antibody [EPR21911-55] (ab236876)

Immunofluorescent analysis of 4% paraformaldehyde-fixed, 0.1% Triton X-100 permeabilized KARPAS-299 (human anaplastic large cell lymphoma) cells labeling BATF with ab236876 at 1/100 dilution, followed by Goat Anti-Rabbit IgG H&L (Alexa Fluor® 488) (**ab150077**) secondary antibody at 1/1000 dilution (green).

Confocal image showing nuclear staining in KARPAS-299 cell line is observed.

Counterstained with **ab195889** Anti-alpha Tubulin antibody [DM1A] - Microtubule Marker (Alexa Fluor® 594) at a 1/200 dilution (red). The nuclear counter stain is DAPI (blue). The control is KARPAS-299 cell line stained incubated with secondary antibody only (**ab150077** AlexaFluor®488 Goat anti-Rabbit secondary).

Negative control: HeLa cell line (PMID: 8570175).



Flow Cytometry (Intracellular) - Anti-BATF antibody [EPR21911-55] (ab236876)

Intracellular flow cytometric analysis of 4% paraformaldehyde-fixed, 90% methanol permeabilized HeLa (human epithelial cell line from cervix adenocarcinoma) cell line (left) and KARPAS-299 (human anaplastic large cell lymphoma) cell line (right) labeling BATF with ab236876 at 1/500 dilution (red) compared with a Rabbit monoclonal IgG - Isotype control (**ab172730**) (black) and an unlabeled control (cells incubated with secondary antibody only) (blue). Goat anti rabbit IgG (Alexa Fluor® 488, **ab150077**), at 1/2000 dilution was used as the secondary antibody.

Negative control: HeLa (PMID: 8570175).

Why choose a recombinant antibody?



Research with confidence
Consistent and reproducible results



Long-term and scalable supply
Recombinant technology



Success from the first experiment
Confirmed specificity



Ethical standards compliant
Animal-free production

Anti-BATF antibody [EPR21911-55] (ab236876)

Please note: All products are "FOR RESEARCH USE ONLY. NOT FOR USE IN DIAGNOSTIC PROCEDURES"

Our Abpromise to you: Quality guaranteed and expert technical support

- Replacement or refund for products not performing as stated on the datasheet
- Valid for 12 months from date of delivery
- Response to your inquiry within 24 hours
- We provide support in Chinese, English, French, German, Japanese and Spanish
- Extensive multi-media technical resources to help you
- We investigate all quality concerns to ensure our products perform to the highest standards

If the product does not perform as described on this datasheet, we will offer a refund or replacement. For full details of the Abpromise, please visit <https://www.abcam.co.jp/abpromise> or contact our technical team.

Terms and conditions

- Guarantee only valid for products bought direct from Abcam or one of our authorized distributors