

Anti-BANF1/BAF antibody [EPR7669] ab129074

リコンビナント **RabMAb**

★★★★★ **1 Abreviews** 画像数 4

製品の概要

| | |
|--------------|--|
| 製品名 | Anti-BANF1/BAF antibody [EPR7669] |
| 製品の詳細 | Rabbit monoclonal [EPR7669] to BANF1/BAF |
| 由来種 | Rabbit |
| アプリケーション | 適用あり: Flow Cyt (Intra), WB, ICC/IF 適用なし: IHC-P |
| 種交差性 | 交差種: Mouse, Rat, Human |
| 免疫原 | Synthetic peptide within Human BANF1/BAF aa 50-150. The exact sequence is proprietary. |
| ポジティブ・コントロール | HeLa, HepG2 and 293T cell lysate; Human thyroid gland carcinoma tissue. |
| 特記事項 | This product is a recombinant monoclonal antibody, which offers several advantages including: <ul style="list-style-type: none"> - High batch-to-batch consistency and reproducibility - Improved sensitivity and specificity - Long-term security of supply - Animal-free production For more information see here . Our RabMAb [®] technology is a patented hybridoma-based technology for making rabbit monoclonal antibodies. For details on our patents, please refer to RabMAb[®] patents . |

製品の特性

| | |
|--------|--|
| 製品の状態 | Liquid |
| 保存方法 | Shipped at 4°C. Store at -20°C. Stable for 12 months at -20°C. |
| バッファー | pH: 7.20 Preservative: 0.01% Sodium azide Constituents: 59% PBS, 40% Glycerol (glycerin, glycerine), 0.05% BSA |
| 精製度 | Protein A purified |
| ポリ/モノ | モノクローナル |
| クローン名 | EPR7669 |
| アイソタイプ | IgG |

アプリケーション

The Abpromise guarantee **Abpromise保証は、** 次のテスト済みアプリケーションにおけるab129074の使用に適用されます
アプリケーションノートには、推奨の開始希釈率がありますが、適切な希釈率につきましてはご検討ください。

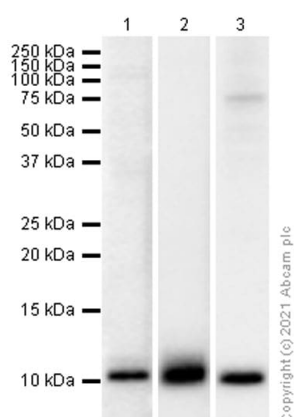
| アプリケーション | Abreviews | 特記事項 |
|------------------|-----------|---|
| Flow Cyt (Intra) | | 1/10 - 1/100. ab172730 - Rabbit monoclonal IgG, is suitable for use as an isotype control with this antibody. |
| WB | ★★★★★ (1) | 1/1000 - 1/10000. Detects a band of approximately 10 kDa (predicted molecular weight: 10 kDa). |
| ICC/IF | | 1/50. |

追加情報 Is unsuitable for IHC-P.

ターゲット情報

| | |
|--------------|--|
| 機能 | Plays fundamental roles in nuclear assembly, chromatin organization, gene expression and gonad development. May potentially compress chromatin structure and be involved in membrane recruitment and chromatin decondensation during nuclear assembly. Contains 2 non-specific dsDNA-binding sites which may promote DNA cross-bridging. Exploited by retroviruses for inhibiting self-destructing autointegration of retroviral DNA, thereby promoting integration of viral DNA into the host chromosome. EMD and BAF are cooperative cofactors of HIV-1 infection. Association of EMD with the viral DNA requires the presence of BAF and viral integrase. The association of viral DNA with chromatin requires the presence of BAF and EMD. |
| 組織特異性 | Widely expressed. Expressed in colon, brain, heart, kidney, liver, lung, ovary, pancreas, placenta, prostate, skeletal muscle, small intestine, spleen and testis. Not detected in thymus and peripheral blood leukocytes. |
| 配列類似性 | Belongs to the BAF family. |
| ドメイン | Has a helix-hairpin-helix (HhH) structural motif conserved among proteins that bind non-specifically to DNA. LEM domain proteins bind centrally on the BAF dimer, whereas DNA binds to the left and right sides. |
| 翻訳後修飾 | Partially phosphorylated on serine. Ser-4 phosphorylation may block BAF ability to promote EMD binding to lamins in vitro. Non phosphorylated BAF seems to enhances binding between EMD and LMNA. |
| 細胞内局在 | Nucleus. Cytoplasm. Chromosome. Significantly enriched at the nuclear inner membrane, diffusely throughout the nucleus during interphase and concentrated at the chromosomes during the M-phase. May be included in HIV-1 virions via its interaction with viral GAG polyprotein. |

画像



Western blot - Anti-BANF1/BAF antibody
[EPR7669] (ab129074)

All lanes : Anti-BANF1/BAF antibody [EPR7669] (ab129074) at 1/1000 dilution (Purified)

Lane 1 : HeLa (Human cervix adenocarcinoma epithelial cell) whole cell lysate

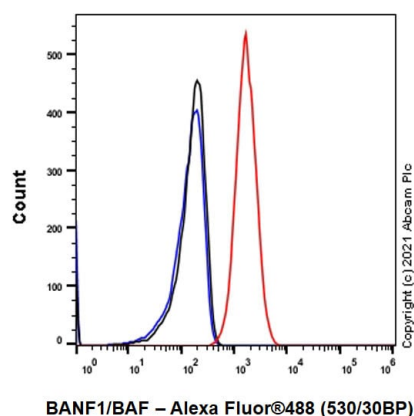
Lane 2 : NIH/3T3 (Mouse embryonic fibroblast) whole cell lysate

Lane 3 : PC-12 (Rat adrenal gland pheochromocytoma) whole cell lysate

Secondary

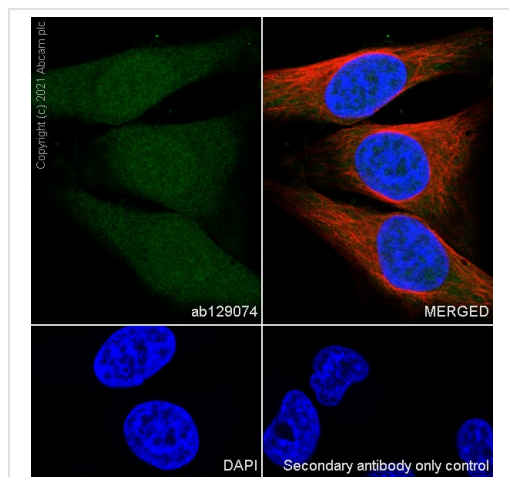
All lanes : Goat Anti-Rabbit IgG H&L (HRP) ([ab97051](#)) at 1/20000 dilution

Predicted band size: 10 kDa



Flow Cytometry (Intracellular) - Anti-BANF1/BAF antibody [EPR7669] (ab129074)





Flow Cytometry analysis of HeLa (Human cervix adenocarcinoma epithelial cell) cells labelling BANF1/BAF with Purified ab129074 at 1:20 dilution (10 μ g/ml) (Red). Cells were fixed with 4% Paraformaldehyde and permeabilised with 90% Methanol. A Goat anti rabbit IgG (Alexa Fluor® 488, [ab150081](#)) secondary antibody was used at 1:2000. Isotype control - Rabbit monoclonal IgG (Black). Unlabelled control - Cell without incubation with primary antibody and secondary antibody (Blue).



Immunocytochemistry/ Immunofluorescence - Anti-BANF1/BAF antibody [EPR7669] (ab129074)

Immunocytochemistry analysis of HeLa (Human cervix adenocarcinoma epithelial cell) cells labeling BANF1/BAF with Purified ab129074 at 1:50 dilution (6.0 µg/ml). Cells were fixed in 4% Paraformaldehyde and permeabilized with 0.1% tritonX-100. Cells were counterstained with Ab195889 Anti-alpha Tubulin antibody [DM1A] - Microtubule Marker (Alexa Fluor® 594) 1:200 (2.5 µg/ml). Goat anti rabbit IgG (Alexa Fluor® 488, **ab150077**) was used as the secondary antibody at 1:1000 (2 µg/ml) dilution. DAPI (blue) was used as nuclear counterstain. PBS instead of the primary antibody was used as the secondary antibody only control.

Why choose a recombinant antibody?

| | |
|--|--|
|  <p>Research with confidence Consistent and reproducible results</p> |  <p>Long-term and scalable supply Recombinant technology</p> |
|  <p>Success from the first experiment Confirmed specificity</p> |  <p>Ethical standards compliant Animal-free production</p> |

Anti-BANF1/BAF antibody [EPR7669] (ab129074)

Please note: All products are "FOR RESEARCH USE ONLY. NOT FOR USE IN DIAGNOSTIC PROCEDURES"

Our Abpromise to you: Quality guaranteed and expert technical support

- Replacement or refund for products not performing as stated on the datasheet
- Valid for 12 months from date of delivery
- Response to your inquiry within 24 hours
- We provide support in Chinese, English, French, German, Japanese and Spanish
- Extensive multi-media technical resources to help you
- We investigate all quality concerns to ensure our products perform to the highest standards

If the product does not perform as described on this datasheet, we will offer a refund or replacement. For full details of the Abpromise, please visit <https://www.abcam.co.jp/abpromise> or contact our technical team.

Terms and conditions

- Guarantee only valid for products bought direct from Abcam or one of our authorized distributors