

Anti-BACE2 antibody [EPR23339-221] ab270458

リコンビナント RabMAb

★★★★☆ **2 Abreviews** **2 References** 画像数 9

製品の概要

製品名	Anti-BACE2 antibody [EPR23339-221]
製品の詳細	Rabbit monoclonal [EPR23339-221] to BACE2
由来種	Rabbit
アプリケーション	適用あり: IHC-Fr, WB, ICC/IF, IP, IHC-P
種交差性	交差種: Mouse, Rat, Human
免疫原	Recombinant fragment. This information is proprietary to Abcam and/or its suppliers.
ポジティブ・コントロール	WB: HeLa, A549, C6, Beta-TC-6 and Neuro 2a cell lysate. IHC-P: Mouse and rat pancreas tissue. IHC-fr: Mouse pancreas. ICC/IF: Beta-TC-6 cells. IP: Neuro-2a whole cell lysate.
特記事項	<p>This product is a recombinant monoclonal antibody, which offers several advantages including:</p> <ul style="list-style-type: none">- High batch-to-batch consistency and reproducibility- Improved sensitivity and specificity- Long-term security of supply- Animal-free production <p>For more information see here.</p> <p>Our RabMAb[®] technology is a patented hybridoma-based technology for making rabbit monoclonal antibodies. For details on our patents, please refer to RabMAb[®] patents.</p>

製品の特性

製品の状態	Liquid
保存方法	Shipped at 4°C. Store at +4°C short term (1-2 weeks). Upon delivery aliquot. Store at -20°C long term. Avoid freeze / thaw cycle.
バッファー	pH: 7.2 Preservative: 0.01% Sodium azide Constituents: PBS, 40% Glycerol (glycerin, glycerine), 0.05% BSA
精製度	Protein A purified
ポリ/モノ	モノクローナル
クローン名	EPR23339-221
アイソタイプ	IgG

アプリケーション

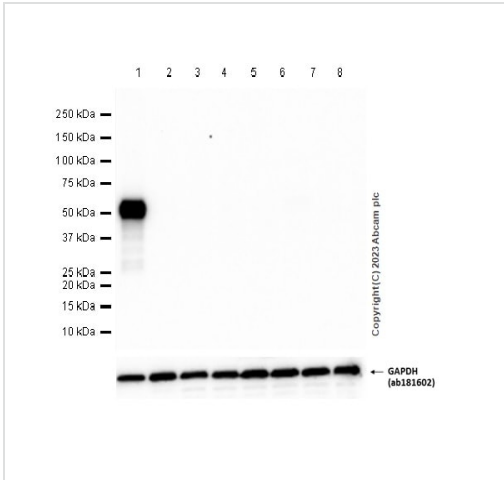
The Abpromise guarantee **Abpromise保証は、次のテスト済みアプリケーションにおけるab270458の使用に適用されます**
アプリケーションノートには、推奨の開始希釈率がありますが、適切な希釈率につきましてはご検討ください。

アプリケーション	Abreviews	特記事項
IHC-Fr		1/100.
WB	★★★★★ (1)	1/1000. Predicted molecular weight: 56 kDa.
ICC/IF		1/50. 100% methanol fixation is recommended.
IP		1/30.
IHC-P	★★★★★ (1)	1/100. Perform heat mediated antigen retrieval with Tris/EDTA buffer pH 9.0 before commencing with IHC staining protocol.

ターゲット情報

機能	Responsible for the proteolytic processing of the amyloid precursor protein (APP). Cleaves APP, between residues 690 and 691, leading to the generation and extracellular release of beta-cleaved soluble APP, and a corresponding cell-associated C-terminal fragment which is later released by gamma-secretase. It has also been shown that it can cleave APP between residues 671 and 672.
組織特異性	Brain. Present in neurons within the hippocampus, frontal cortex and temporal cortex (at protein level). Expressed at low levels in most peripheral tissues and at higher levels in colon, kidney, pancreas, placenta, prostate, stomach and trachea. Expressed at low levels in the brain. Found in spinal cord, medulla oblongata, substantia nigra and locus coeruleus. Expressed in the ductal epithelium of both normal and malignant prostate.
配列類似性	Belongs to the peptidase A1 family.
翻訳後修飾	Undergoes autoproteolytic cleavage. Glycosylated.
細胞内局在	Membrane. Golgi apparatus. Endoplasmic reticulum. Endosome. Cell surface.

画像



Western blot - Anti-BACE2 antibody [EPR23339-221] (ab270458)

All lanes : Anti-BACE2 antibody [EPR23339-221] (ab270458) at 1/1000 dilution

Lane 1 : Beta-TC-6 (Mouse pancreas insulinoma beta cell) whole cell lysate

Lane 2 : Mouse brain tissue lysate

Lane 3 : Mouse hippocampus tissue

Lane 4 : Mouse cerebellum tissue

Lane 5 : Mouse cerebral cortex tissue

Lane 6 : Mouse spinal cord tissue

Lane 7 : Mouse midbrain tissue lysate

Lane 8 : Mouse forebrain tissue lysate

Lysates/proteins at 20 µg per lane.

Secondary

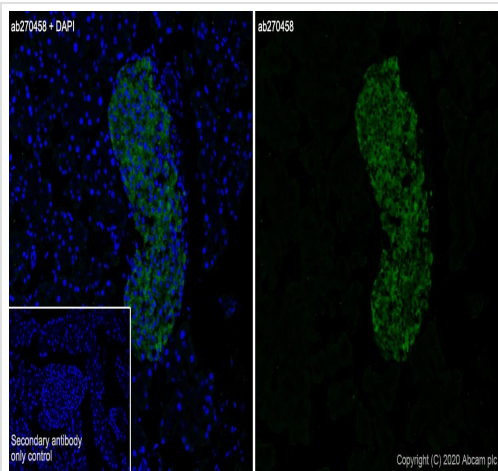
All lanes : Goat Anti-Rabbit IgG H&L (HRP) (**ab97051**) at 1/20000 dilution

Predicted band size: 56 kDa

Observed band size: 56 kDa

Blocking and diluting buffer and concentration: 5% NFDM/TBST.

Brain has very low level of BACE2 [PMID: 10749877, PMID: 30626751].

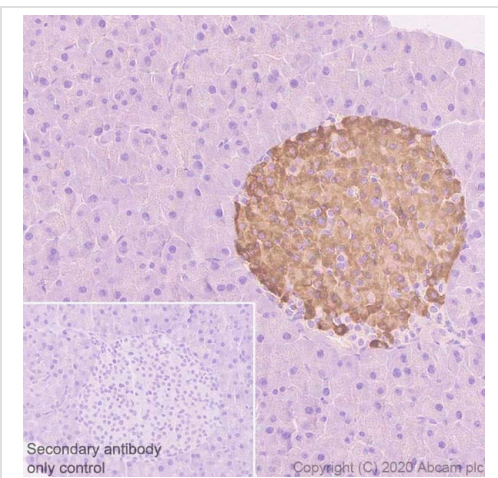


Immunohistochemistry (Frozen sections) - Anti-BACE2 antibody [EPR23339-221] (ab270458)

Immunohistochemical analysis of 4% PFA fixed 0.2% Triton X-100 permeabilized frozen mouse pancreas tissue labeling BACE2 with ab270458 at 1/100 dilution followed by **ab150077** AlexaFluor®488 Goat anti-Rabbit secondary at 1/1000 (2 µg/ml) dilution. The nuclear counterstain was DAPI (Blue).

Heat mediated antigen retrieval using sodium citrate buffer (10mM citrate pH 6.0 + 0.05% Tween-20).

Secondary antibody only control: Used PBS instead of primary antibody, secondary antibody was **ab150077** AlexaFluor®488 Goat anti-Rabbit secondary at 1/1000 (2 µg/ml) dilution.

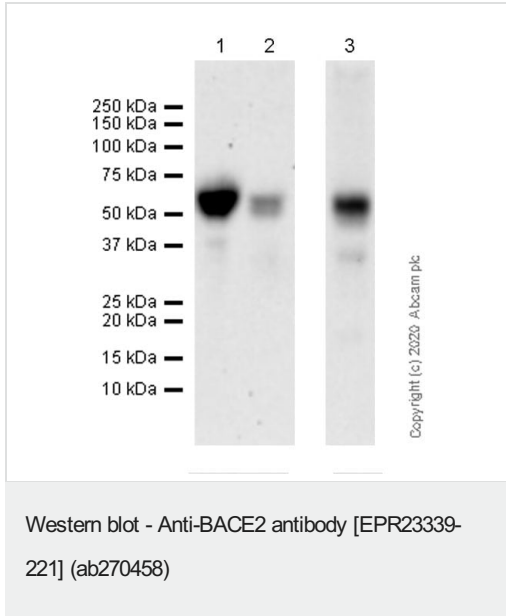


Immunohistochemistry (Formalin/PFA-fixed paraffin-embedded sections) - Anti-BACE2 antibody [EPR23339-221] (ab270458)

Immunohistochemical analysis of paraffin-embedded mouse pancreas tissue labeling BACE2 with ab270458 at 1/100 followed by a ready to use Rabbit specific IHC polymer detection kit HRP/DAB (**ab209101**). Cytoplasmic staining on mouse pancreatic islet (PMID: 21907142). The section was incubated with ab270458 for 30 mins at room temperature. The immunostaining was performed on a Leica Biosystems BOND® RX instrument. Counterstained with hematoxylin.

Secondary antibody only control: Secondary antibody is a ready to use Rabbit specific IHC polymer detection kit HRP/DAB (**ab209101**).

Heat mediated antigen retrieval with Tris-EDTA buffer (pH 9.0, epitope retrieval solution2) for 20 mins.



All lanes : Anti-BACE2 antibody [EPR23339-221] (ab270458) at 1/1000 dilution

Lane 1 : HeLa (human cervix adenocarcinoma epithelial cell), whole cell lysate

Lane 2 : A549 (human lung carcinoma epithelial cell), whole cell lysate

Lane 3 : C6 (rat glial tumor glial cell), whole cell lysate

Lysates/proteins at 20 µg per lane.

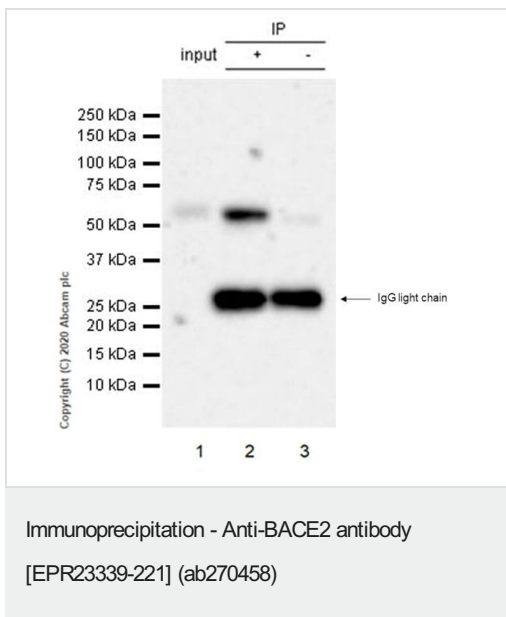
Secondary

All lanes : Goat Anti-Rabbit IgG H&L (HRP) ([ab97051](#)) at 1/100000 dilution

Predicted band size: 56 kDa

Blocking and diluting buffer and concentration: 5% NFDm/TBST.

Exposure time: 136 secs.



BACE2 was immunoprecipitated from 0.35 mg Neuro-2a (mouse neuroblastoma neuroblast) whole cell lysate with ab270458 at 1/30 dilution (2µg in 0.35mg lysates). Western blot was performed on the immunoprecipitate using ab270458 at 1/1000 dilution. VeriBlot for IP Detection Reagent (HRP)([ab131366](#)) was used at 1/5000 dilution.

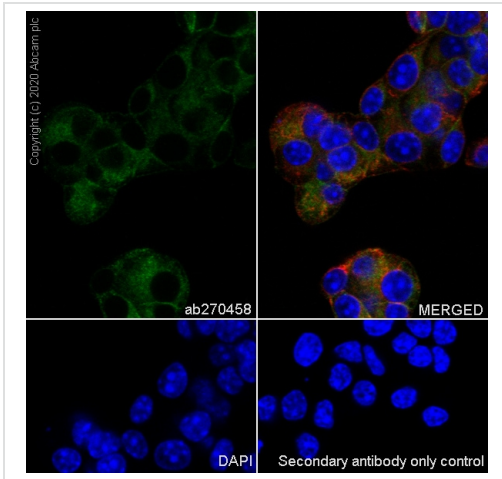
Lane 1: Neuro-2a whole cell lysate.

Lane 2: ab270458 IP in Neuro-2a whole cell lysate.

Lane 3: Rabbit monoclonal IgG ([ab172730](#)) instead of ab270458 in Neuro-2a whole cell lysate.

Blocking and dilution buffer and concentration: 5% NFDm/TBST.

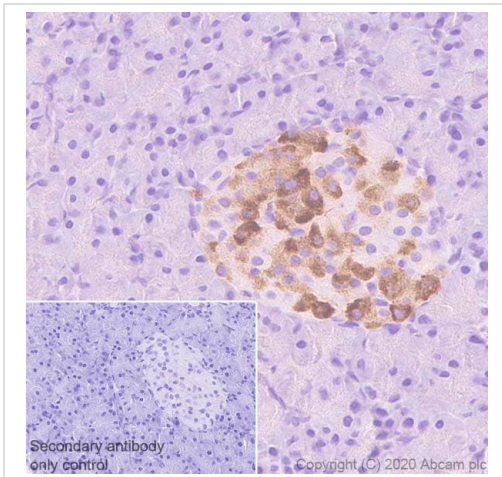
Exposure time: 3 mins.



Immunocytochemistry/ Immunofluorescence - Anti-BACE2 antibody [EPR23339-221] (ab270458)

Immunofluorescent analysis of 100% methanol-fixed, 0.1% Triton X-100 permeabilized Beta-TC-6 cells labeling BACE2 with ab270458 at 1/50 dilution, followed by **ab150077** Goat Anti-Rabbit IgG H&L (Alexa Fluor[®] 488) antibody at 1/1000 dilution (Green). Confocal image showing cytoplasmic and membranous staining in Beta-TC-6 cell line. 100% methanol fixation is recommended. **ab195889** Anti-alpha Tubulin antibody [DM1A] - Microtubule Marker (Alexa Fluor[®] 594) was used to counterstain tubulin at 1/200 dilution (Red). The nuclear counterstain was DAPI (Blue).

Secondary antibody only control: Secondary antibody is **ab150077** Goat Anti-Rabbit IgG H&L (Alexa Fluor[®] 488) at 1/1000 dilution.

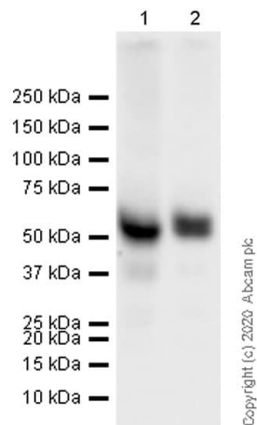


Immunohistochemistry (Formalin/PFA-fixed paraffin-embedded sections) - Anti-BACE2 antibody [EPR23339-221] (ab270458)

Immunohistochemical analysis of paraffin-embedded rat pancreas tissue labeling BACE2 with ab270458 at 1/100 followed by a ready to use Rabbit specific IHC polymer detection kit HRP/DAB (**ab209101**). Cytoplasmic staining on rat pancreatic islet (PMID: 21907142). The section was incubated with ab270458 for 30 mins at room temperature. The immunostaining was performed on a Leica Biosystems BOND[®] RX instrument. Counterstained with hematoxylin.

Secondary antibody only control: Secondary antibody is a ready to use Rabbit specific IHC polymer detection kit HRP/DAB (**ab209101**).

Heat mediated antigen retrieval with Tris-EDTA buffer (pH 9.0, epitope retrieval solution2) for 20 mins.



Western blot - Anti-BACE2 antibody [EPR23339-221] (ab270458)

All lanes : Anti-BACE2 antibody [EPR23339-221] (ab270458) at 1/1000 dilution

Lane 1 : Beta-TC-6 (mouse pancreas insulinoma beta cell), whole cell lysate

Lane 2 : Neuro-2a (mouse neuroblastoma neuroblast), whole cell lysate

Lysates/proteins at 40 µg per lane.

Secondary

All lanes : Goat Anti-Rabbit IgG H&L (HRP) ([ab97051](#)) at 1/100000 dilution

Predicted band size: 56 kDa

Blocking and diluting buffer and concentration: 5% NFD/MTBST.

Exposure time: 10 secs.

Why choose a recombinant antibody?



Research with confidence
Consistent and reproducible results



Long-term and scalable supply
Recombinant technology



Success from the first experiment
Confirmed specificity



Ethical standards compliant
Animal-free production

Anti-BACE2 antibody [EPR23339-221] (ab270458)

Please note: All products are "FOR RESEARCH USE ONLY. NOT FOR USE IN DIAGNOSTIC PROCEDURES"

Our Abpromise to you: Quality guaranteed and expert technical support

- Replacement or refund for products not performing as stated on the datasheet
- Valid for 12 months from date of delivery
- Response to your inquiry within 24 hours
- We provide support in Chinese, English, French, German, Japanese and Spanish

- Extensive multi-media technical resources to help you
- We investigate all quality concerns to ensure our products perform to the highest standards

If the product does not perform as described on this datasheet, we will offer a refund or replacement. For full details of the Abpromise, please visit <https://www.abcam.co.jp/abpromise> or contact our technical team.

Terms and conditions

- Guarantee only valid for products bought direct from Abcam or one of our authorized distributors