

Anti-ATP5H antibody [10G5AB2] ab173006

[1 Abreviews](#) [1 References](#) [画像数 4](#)

製品の概要

製品名	Anti-ATP5H antibody [10G5AB2]
製品の詳細	Mouse monoclonal [10G5AB2] to ATP5H
由来種	Mouse
アプリケーション	適用あり: WB, ICC/IF, Flow Cyt
種交差性	交差種: Mouse, Rat, Cow, Human, African green monkey
免疫原	Full length native protein (purified). This information is considered to be commercially sensitive.
ポジティブ・コントロール	Human, Rat, Mouse and Bovine Heart Homogenates; HeLa, HepG2, H4IIE, MEF, NIH-3T3 and COS7 cell lysates; HDFn cells; HeLa cells.
特記事項	<p>This antibody clone is manufactured by Abcam. If you require a custom buffer formulation or conjugation for your experiments, please contact orders@abcam.com.</p> <p>The Life Science industry has been in the grips of a reproducibility crisis for a number of years. Abcam is leading the way in addressing this with our range of recombinant monoclonal antibodies and knockout edited cell lines for gold-standard validation. Please check that this product meets your needs before purchasing.</p> <p>If you have any questions, special requirements or concerns, please send us an inquiry and/or contact our Support team ahead of purchase. Recommended alternatives for this product can be found below, along with publications, customer reviews and Q&As</p> <p>Product was previously marketed under the MitoSciences sub-brand.</p>

製品の特性

製品の状態	Liquid
保存方法	Shipped at 4°C. Store at +4°C. Do Not Freeze.
バッファー	<p>pH: 7.5</p> <p>Preservative: 0.02% Sodium azide</p> <p>Constituent: 99% HEPES buffered saline</p>
ポリ/モノ	モノクローナル
クローン名	10G5AB2
アイソタイプ	IgG1

アプリケーション

The Abpromise guarantee

Abpromise保証は、次のテスト済みアプリケーションにおけるab173006の使用に適用されます

アプリケーションノートには、推奨の開始希釈率がありますが、適切な希釈率につきましてはご検討ください。

アプリケーション	Abreviews	特記事項
WB		Use a concentration of 0.5 µg/ml. Predicted molecular weight: 18 kDa.
ICC/IF		Use a concentration of 1 µg/ml.
Flow Cyt		Use a concentration of 1 µg/ml. ab170190 - Mouse monoclonal IgG1, is suitable for use as an isotype control with this antibody.

ターゲット情報

機能

Mitochondrial membrane ATP synthase (F(1)F(0) ATP synthase or Complex V) produces ATP from ADP in the presence of a proton gradient across the membrane which is generated by electron transport complexes of the respiratory chain. F-type ATPases consist of two structural domains, F(1) - containing the extramembraneous catalytic core, and F(0) - containing the membrane proton channel, linked together by a central stalk and a peripheral stalk. During catalysis, ATP synthesis in the catalytic domain of F(1) is coupled via a rotary mechanism of the central stalk subunits to proton translocation. Part of the complex F(0) domain and the peripheral stalk, which acts as a stator to hold the catalytic alpha(3)beta(3) subcomplex and subunit a/ATP6 static relative to the rotary elements.

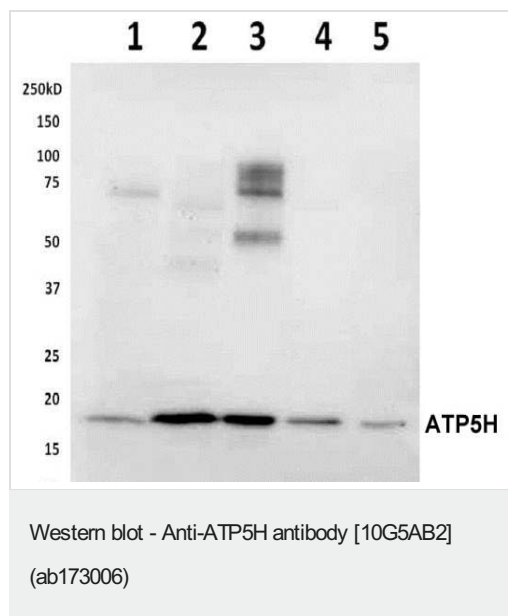
配列類似性

Belongs to the ATPase d subunit family.

細胞内局在

Mitochondrion. Mitochondrion inner membrane.

画像



All lanes : Anti-ATP5H antibody [10G5AB2] (ab173006) at 0.200000002980232 µg/ml

Lane 1 : Human Heart Homogenate at 20 µg

Lane 2 : Rat Heart Homogenate at 20 µg

Lane 3 : Mouse Heart Homogenate at 20 µg

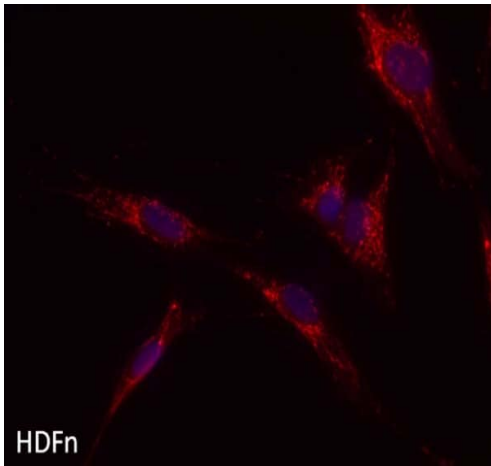
Lane 4 : Bovine Heart Homogenate at 15 µg

Lane 5 : Hela cell lysate at 20 µg

Secondary

All lanes : Goat polyclonal to Mouse IgG - HRP at 1/5000 dilution

Predicted band size: 18 kDa



Immunocytochemistry/ Immunofluorescence - Anti-ATP5H antibody [10G5AB2] (ab173006)

Immunocytochemistry with HDFn cells stained with ab173006 (red) and DAPI (blue).

Fixation: Paraformaldehyde fixed (4%, 20 min).

Used heated antigen retrieval for optimal signal.

Permeabilization: Triton X-100 permeabilized (0.1%, 10min).

Blocking: 10% Goat Serum/PBS (1 hour).

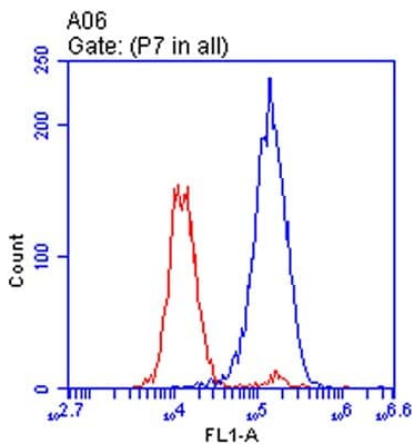
Primary: ab173006 5 µg/ml (10% Goat Serum/PBS, 2hr at room temperature or over night at 4°C).

Secondary: Alexa Fluor® 594 goat anti-mouse H+L used at a 1/1000 dilution in 1% Goat Serum/PBS for 1hr at RT.

Washing: 3X 1% Goat Serum/PBS, 10 mins/wash.

DAPI: 2 µM in 1% Goat Serum/PBS, 10 mins.

The target protein locates to the mitochondria (red).



Flow Cytometry - Anti-ATP5H antibody [10G5AB2] (ab173006)

Flow Cytometry with HeLa cells stained with ab173006 (blue) and isotype-specific negative control (red).

Fixation: Paraformaldehyde fixed (4%, 15 min).

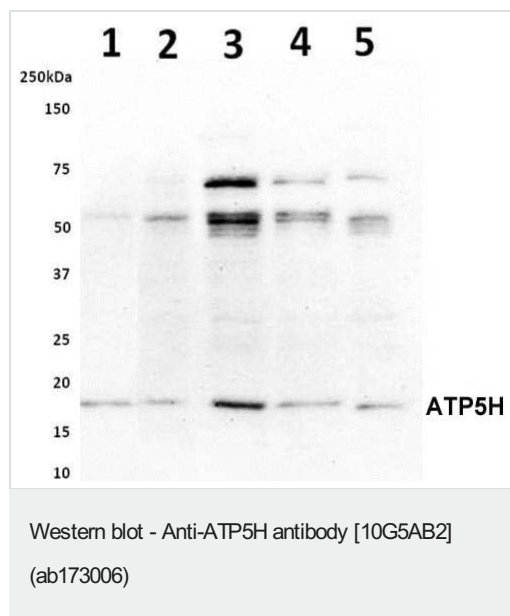
Permeabilization: Methanol permeabilized (90%, @ -20°C for >30 min).

Blocking: 1% BSA /PBS (20 min).

Primary: ab173006 0.5 µg/ml in 1% BSA/PBS, 1hr at room temperature.

Secondary: Alexa Fluor® 488 goat anti-mouse IgG1 used at a 1/1000 dilution in 1% BSA/PBS for 30 min at RT.

Washing: 2x 1% BSA/PBS.



All lanes : Anti-ATP5H antibody [10G5AB2] (ab173006) at 0.5 µg/ml

Lane 1 : HepG2 cell lysate at 20 µg

Lane 2 : H4IIE cell lysate at 20 µg

Lane 3 : MEF cell lysate at 20 µg

Lane 4 : NIH-3T3 cell lysate at 20 µg

Lane 5 : COS7 cell lysate at 10 µg

Secondary

All lanes : Goat polyclonal to Mouse IgG - HRP at 1/5000 dilution

Predicted band size: 18 kDa

Please note: All products are "FOR RESEARCH USE ONLY. NOT FOR USE IN DIAGNOSTIC PROCEDURES"

Our Abpromise to you: Quality guaranteed and expert technical support

- Replacement or refund for products not performing as stated on the datasheet
- Valid for 12 months from date of delivery
- Response to your inquiry within 24 hours
- We provide support in Chinese, English, French, German, Japanese and Spanish
- Extensive multi-media technical resources to help you
- We investigate all quality concerns to ensure our products perform to the highest standards

If the product does not perform as described on this datasheet, we will offer a refund or replacement. For full details of the Abpromise, please visit <https://www.abcam.co.jp/abpromise> or contact our technical team.

Terms and conditions

- Guarantee only valid for products bought direct from Abcam or one of our authorized distributors