

Anti-ATP5C1 antibody [2A1AA11] ab119686

7 References **画像数 4**

製品の概要

製品名	Anti-ATP5C1 antibody [2A1AA11]
製品の詳細	Mouse monoclonal [2A1AA11] to ATP5C1
由来種	Mouse
アプリケーション	適用あり: WB, Flow Cyt, ICC/IF, IHC-P
種交差性	交差種: Mouse, Rat, Cow, Human
免疫原	Tissue, cells or virus. This information is proprietary to Abcam and/or its suppliers.
ポジティブ・コントロール	This antibody gave a positive result in IHC in the following FFPE tissue: Human normal heart muscle.
特記事項	<p>This antibody clone is manufactured by Abcam. If you require a custom buffer formulation or conjugation for your experiments, please contact orders@abcam.com.</p> <p>The Life Science industry has been in the grips of a reproducibility crisis for a number of years. Abcam is leading the way in addressing this with our range of recombinant monoclonal antibodies and knockout edited cell lines for gold-standard validation. Please check that this product meets your needs before purchasing.</p> <p>If you have any questions, special requirements or concerns, please send us an inquiry and/or contact our Support team ahead of purchase. Recommended alternatives for this product can be found below, along with publications, customer reviews and Q&As</p> <p>Product was previously marketed under the MitoSciences sub-brand.</p>

製品の特性

製品の状態	Liquid
保存方法	Shipped at 4°C. Store at +4°C short term (1-2 weeks). Upon delivery aliquot. Store at -20°C long term. Avoid freeze / thaw cycle.
バッファー	<p>pH: 7.5</p> <p>Preservative: 0.02% Sodium azide</p> <p>Constituent: 99% HEPES buffered saline</p>
精製度	Ammonium Sulphate Precipitation
特記事項 (精製)	Purity is near homogeneity as judged by SDS-PAGE. The antibody was produced in vitro using hybridomas grown in serum-free medium, and then concentrated by ammonium sulfate

	precipitation.
ポリ/モノ	モノクローナル
クローン名	2A1AA11
アイソタイプ	IgG2b
軽鎖の種類	kappa

アプリケーション

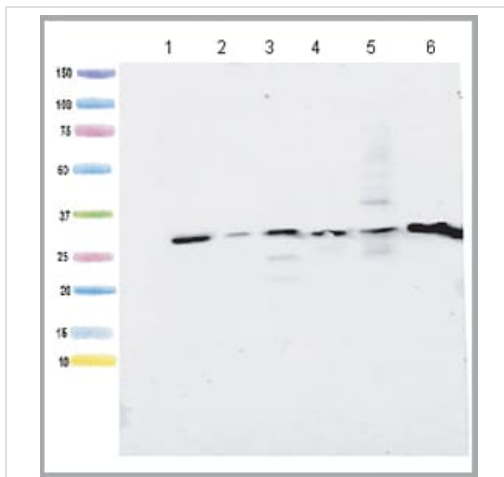
The Abpromise guarantee **Abpromise保証は、次のテスト済みアプリケーションにおけるab119686の使用に適用されます**
 アプリケーションノートには、推奨の開始希釈率がありますが、適切な希釈率につきましてはご検討ください。

アプリケーション	Abreviews	特記事項
WB		Use a concentration of 1 µg/ml. Predicted molecular weight: 33 kDa.
Flow Cyt		Use a concentration of 1 µg/ml. ab170192 - Mouse monoclonal IgG2b, is suitable for use as an isotype control with this antibody.
ICC/IF		Use a concentration of 1 µg/ml.
IHC-P		Use a concentration of 5 µg/ml.

ターゲット情報

機能	Mitochondrial membrane ATP synthase (F(1)F(0) ATP synthase or Complex V) produces ATP from ADP in the presence of a proton gradient across the membrane which is generated by electron transport complexes of the respiratory chain. F-type ATPases consist of two structural domains, F(1) - containing the extramembraneous catalytic core, and F(0) - containing the membrane proton channel, linked together by a central stalk and a peripheral stalk. During catalysis, ATP synthesis in the catalytic domain of F(1) is coupled via a rotary mechanism of the central stalk subunits to proton translocation. Part of the complex F(1) domain and the central stalk which is part of the complex rotary element. The gamma subunit protrudes into the catalytic domain formed of alpha(3)beta(3). Rotation of the central stalk against the surrounding alpha(3)beta(3) subunits leads to hydrolysis of ATP in three separate catalytic sites on the beta subunits.
組織特異性	Isoform Heart is expressed specifically in the heart and skeletal muscle, which require rapid energy supply. Isoform Liver is expressed in the brain, liver and kidney. Isoform Heart and Isoform Liver are expressed in the skin, intestine, stomach and aorta.
配列類似性	Belongs to the ATPase gamma chain family.
細胞内局在	Mitochondrion. Mitochondrion inner membrane.

画像



Western blot - Anti-ATP5C1 antibody [2A1AA11] (ab119686)

All lanes : Anti-ATP5C1 antibody [2A1AA11] (ab119686) at 1 µg/ml

Lane 1 : human heart homogenate lysate at 15 µg

Lane 2 : human HepG2 cell lysate at 15 µg

Lane 3 : human liver mitochondria lysate at 7.5 µg

Lane 4 : rat liver mitochondria lysate at 7.5 µg

Lane 5 : mouse liver mitochondria lysate at 7.5 µg

Lane 6 : bovine heart mitochondria lysate at 7.5 µg

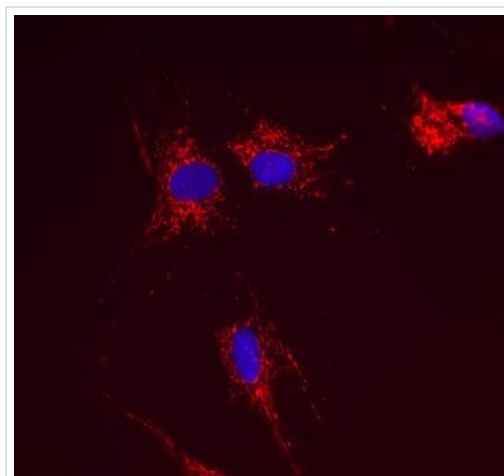
Secondary

All lanes : Goat anti-mouse HRP at 1/5000 dilution

Developed using the ECL technique.

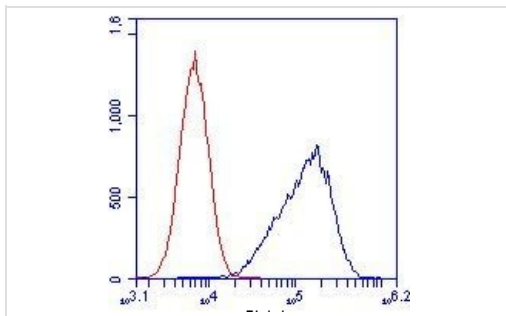
Performed under reducing conditions.

Predicted band size: 33 kDa



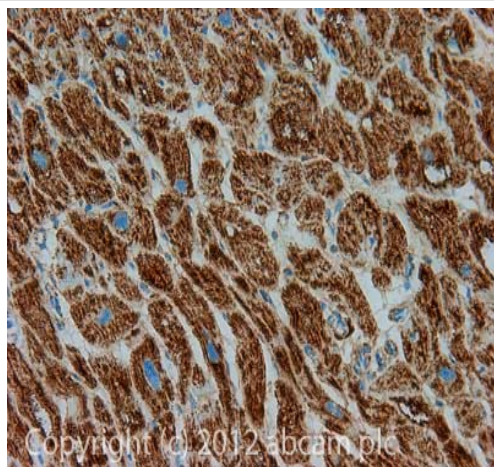
Immunocytochemistry/ Immunofluorescence - Anti-ATP5C1 antibody [2A1AA11] (ab119686)

Immunocytochemistry using ab119686 stained HDFn cells (human). The cells were paraformaldehyde fixed (4%, 20 min) and Triton X-100 permeabilized (0.1%, 15min) with antigen retrieval. The cells were then incubated with the antibody (ab119686, 1µg/ml) for 2h at room temperature or over night at 4°C. The secondary antibody was (red) 594 goat anti-mouse IgG (H+L) used at a 1/1000 dilution for 1h. 10% Goat serum was used as the blocking agent for all blocking steps. The target protein locates to the mitochondria.



Flow Cytometry - Anti-ATP5C1 antibody [2A1AA11]
(ab119686)

Flow cytometry. Hela cells were stained with 1 µg/mL anti-ATP5C1 antibody (ab119686) (blue) or an equal amount of an isotype control antibody (red) and analyzed by flow cytometry.



Immunohistochemistry (Formalin/PFA-fixed paraffin-
embedded sections) - Anti-ATP5C1 antibody
[2A1AA11] (ab119686)

IHC image of ATP5C1 staining in Human normal heart muscle formalin fixed paraffin embedded tissue section, performed on a Leica Bond™ system using the standard protocol F. The section was pre-treated using heat mediated antigen retrieval with sodium citrate buffer (pH6, epitope retrieval solution 1) for 20 mins. The section was then incubated with ab119686, 5 µg/ml, for 15 mins at room temperature and detected using an HRP conjugated compact polymer system. DAB was used as the chromogen. The section was then counterstained with haematoxylin and mounted with DPX.

For other IHC staining systems (automated and non-automated) customers should optimize variable parameters such as antigen retrieval conditions, primary antibody concentration and antibody incubation times.

Please note: All products are "FOR RESEARCH USE ONLY. NOT FOR USE IN DIAGNOSTIC PROCEDURES"

Our Abpromise to you: Quality guaranteed and expert technical support

- Replacement or refund for products not performing as stated on the datasheet
- Valid for 12 months from date of delivery
- Response to your inquiry within 24 hours
- We provide support in Chinese, English, French, German, Japanese and Spanish
- Extensive multi-media technical resources to help you
- We investigate all quality concerns to ensure our products perform to the highest standards

If the product does not perform as described on this datasheet, we will offer a refund or replacement. For full details of the Abpromise, please visit <https://www.abcam.co.jp/abpromise> or contact our technical team.

Terms and conditions

- Guarantee only valid for products bought direct from Abcam or one of our authorized distributors