

Anti-ATP11A antibody ab105351

画像数 3

製品の概要

製品名	Anti-ATP11A antibody
製品の詳細	Rabbit polyclonal to ATP11A
由来種	Rabbit
特異性	ab105351 is predicted to not cross react with AT11B. At least two isoforms of ATP11A are known to exist; this antibody will recognize both.
アプリケーション	適用あり: WB, ICC
種交差性	交差種: Human
免疫原	Synthetic peptide corresponding to Human ATP11A (N terminal). Database link: NP_115565
ポジティブ・コントロール	WB: K562 cell lysate ICC: K562 cells
特記事項	<p>The Life Science industry has been in the grips of a reproducibility crisis for a number of years. Abcam is leading the way in addressing this with our range of recombinant monoclonal antibodies and knockout edited cell lines for gold-standard validation. Please check that this product meets your needs before purchasing.</p> <p>If you have any questions, special requirements or concerns, please send us an inquiry and/or contact our Support team ahead of purchase. Recommended alternatives for this product can be found below, along with publications, customer reviews and Q&As</p>

製品の特性

製品の状態	Liquid
保存方法	Shipped at 4°C. Store at +4°C.
バッファー	pH: 7.2 Preservative: 0.02% Sodium azide Constituent: PBS
精製度	Immunogen affinity purified
ポリ/モノ	ポリクローナル
アイソタイプ	IgG

アプリケーション

The Abpromise guarantee

Abpromise保証は、次のテスト済みアプリケーションにおけるab105351の使用に適用されます

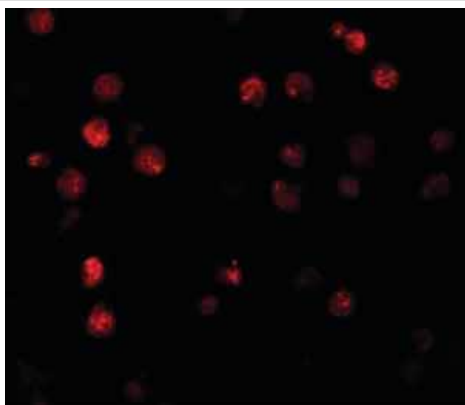
アプリケーションノートには、推奨の開始希釈率がありますが、適切な希釈率につきましてはご検討ください。

アプリケーション	Abreviews	特記事項
WB		Use a concentration of 1 - 2 µg/ml. Predicted molecular weight: 130 kDa.
ICC		Use a concentration of 10 - 20 µg/ml.

ターゲット情報

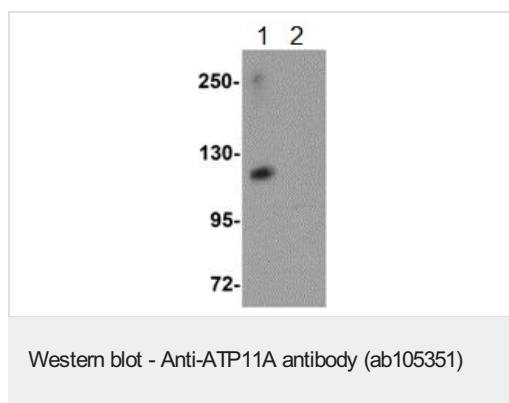
機能	Catalytic component of a P4-ATPase flippase complex which catalyzes the hydrolysis of ATP coupled to the transport of aminophospholipids from the outer to the inner leaflet of various membranes and ensures the maintenance of asymmetric distribution of phospholipids. Phospholipid translocation seems also to be implicated in vesicle formation and in uptake of lipid signaling molecules (Probable). May be involved in the uptake of farnesyltransferase inhibitor drugs, such as lonafarnib.
配列類似性	Belongs to the cation transport ATPase (P-type) (TC 3.A.3) family. Type IV subfamily.
細胞内局在	Cell membrane. Early endosome. Recycling endosome. Endoplasmic reticulum. Exit from the endoplasmic reticulum requires the presence of TMEM30A, but not TMEM30B. In the presence of TMEM30A, predominantly located in the plasma membrane.
製品の状態	P-type ATPases, such as ATP11A, are phosphorylated in their intermediate state and drive uphill transport of ions across membranes.

画像



Immunofluorescence of ATP11A in K562 cells with ab105351 at 20 µg/mL.

Immunocytochemistry - Anti-ATP11A antibody
(ab105351)



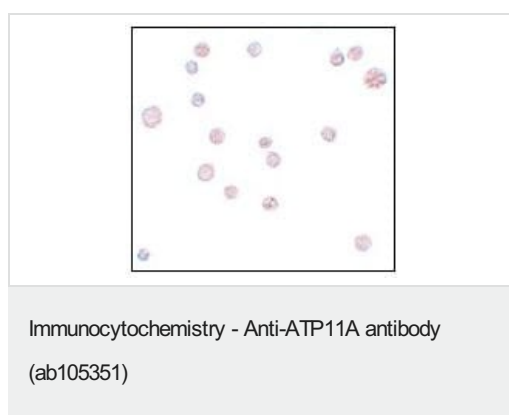
All lanes : Anti-ATP11A antibody (ab105351) at 1 µg/ml

Lane 1 : K562 cell lysate

Lane 2 : K562 cell lysate with blocking peptide

Lysates/proteins at 15 µg per lane.

Predicted band size: 130 kDa



ab105351, at 10 µg/ml, staining ATP11A in K562 cells by Immunocytochemistry.

Please note: All products are "FOR RESEARCH USE ONLY. NOT FOR USE IN DIAGNOSTIC PROCEDURES"

Our Abpromise to you: Quality guaranteed and expert technical support

- Replacement or refund for products not performing as stated on the datasheet
- Valid for 12 months from date of delivery
- Response to your inquiry within 24 hours
- We provide support in Chinese, English, French, German, Japanese and Spanish
- Extensive multi-media technical resources to help you
- We investigate all quality concerns to ensure our products perform to the highest standards

If the product does not perform as described on this datasheet, we will offer a refund or replacement. For full details of the Abpromise, please visit <https://www.abcam.co.jp/abpromise> or contact our technical team.

Terms and conditions

- Guarantee only valid for products bought direct from Abcam or one of our authorized distributors