

Anti-ATOX1 antibody [EPR10352] ab154179

KO 評価済 リコンビナント RabMAb

★★★★★ **2 Abreviews** **5 References** 画像数 6

製品の概要

製品名	Anti-ATOX1 antibody [EPR10352]
製品の詳細	Rabbit monoclonal [EPR10352] to ATOX1
由来種	Rabbit
アプリケーション	適用あり: WB, IHC-P, IP 適用なし: Flow Cyt or ICC/IF
種交差性	交差種: Human
免疫原	Synthetic peptide. This information is proprietary to Abcam and/or its suppliers.
ポジティブ・コントロール	WB: HepG2, HeLa and 293T cell lysates. IHC-P: Human prostatic hyperplasia tissue IP: HeLa.
特記事項	<p>This product is a recombinant monoclonal antibody, which offers several advantages including:</p> <ul style="list-style-type: none"> - High batch-to-batch consistency and reproducibility - Improved sensitivity and specificity - Long-term security of supply - Animal-free production <p>For more information see here.</p> <p>Our RabMAb[®] technology is a patented hybridoma-based technology for making rabbit monoclonal antibodies. For details on our patents, please refer to RabMAb[®] patents.</p> <p>Mouse, Rat: We have preliminary internal testing data to indicate this antibody may not react with these species. Please contact us for more information.</p>

製品の特性

製品の状態	Liquid
保存方法	Shipped at 4°C. Upon delivery aliquot and store at -20°C. Avoid repeated freeze / thaw cycles.
バッファー	<p>pH: 7.2</p> <p>Preservative: 0.01% Sodium azide</p> <p>Constituents: 9% PBS, 40% Glycerol (glycerin, glycerine), 0.05% BSA, 50% Tissue culture supernatant</p>
精製度	Tissue culture supernatant
ポリ/モノ	モノクローナル

クローン名EPR10352
アイソタイプIgG

アプリケーション

The Abpromise guarantee **Abpromise保証は、次のテスト済みアプリケーションにおけるab154179の使用に適用されます**
アプリケーションノートには、推奨の開始希釈率がありますが、適切な希釈率につきましてはご検討ください。

アプリケーション	Abreviews	特記事項
WB	★★★★★ (2)	1/1000 - 1/10000. Predicted molecular weight: 7 kDa.
IHC-P		1/100 - 1/250. Perform heat mediated antigen retrieval with citrate buffer pH 6 before commencing with IHC staining protocol.
IP		1/100 - 1/500.

追加情報Is unsuitable for Flow Cyt or ICC/IF.

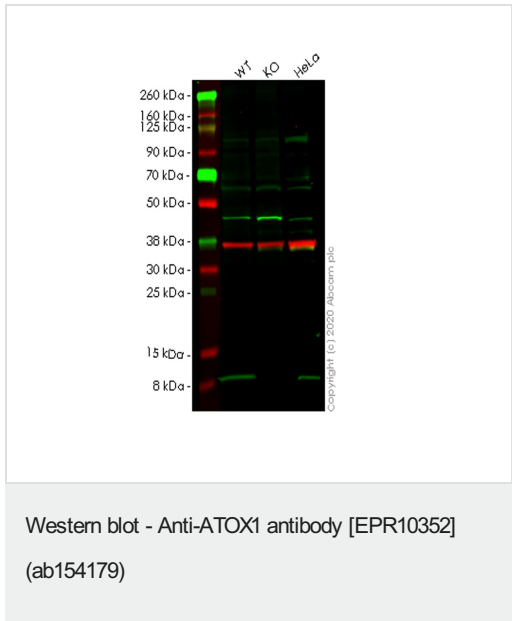
ターゲット情報

機能Could bind and deliver cytosolic copper to the copper ATPase proteins. May be important in cellular antioxidant defense.

組織特異性Ubiquitous.

配列類似性Belongs to the ATX1 family.
Contains 1 HMA domain.

画像



All lanes : Anti-ATOX1 antibody [EPR10352] (ab154179) at 1/500 dilution

Lane 1 : Wild-type HEK293T cell lysate
Lane 2 : ATOX1 knockout HEK293T cell lysate
Lane 3 : HeLa cell lysate

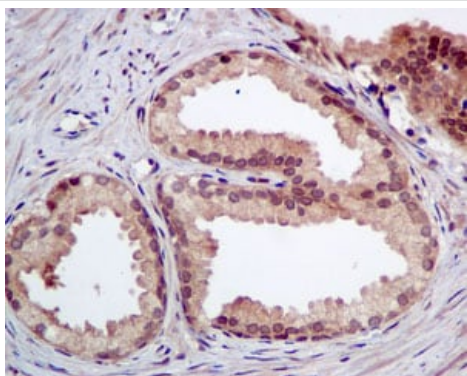
Lysates/proteins at 20 µg per lane.

Secondary
All lanes : Goat anti-Rabbit IgG H&L (IRDye® 800CW) preadsorbed (**ab216773**) at 1/10000 dilution

Predicted band size: 7 kDa
Observed band size: 7 kDa

Lanes 1-4: Merged signal (red and green). Green - ab154179 observed at 7 kDa. Red - loading control **ab8245** observed at 36 kDa.

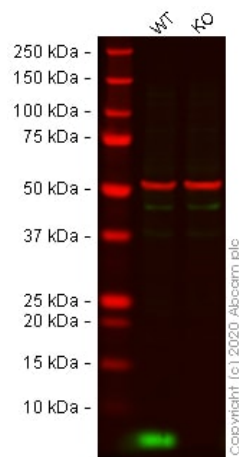
ab154179 Anti-ATOX1 antibody [EPR10352] was shown to specifically react with ATOX1 in wild-type HEK293T cells. Loss of signal was observed when knockout cell line **ab266651** (knockout cell lysate **ab257849**) was used. Wild-type and ATOX1 knockout samples were subjected to SDS-PAGE. ab154179 and Anti-GAPDH antibody [6C5] - Loading Control (**ab8245**) were incubated overnight at 4°C at 1 in 500 dilution and 1 in 20000 dilution respectively. Blots were developed with Goat anti-Rabbit IgG H&L (IRDye® 800CW) preadsorbed (**ab216773**) and Goat anti-Mouse IgG H&L (IRDye® 680RD) preadsorbed (**ab216776**) secondary antibodies at 1 in 20000 dilution for 1 hour at room temperature before imaging.



Immunohistochemical analysis of paraffin-embedded Human prostatic hyperplasia tissue labeling ATOX1 with ab154179 at 1/100 dilution.

Perform heat mediated antigen retrieval with citrate buffer pH 6 before commencing with IHC staining protocol.

Immunohistochemistry (Formalin/PFA-fixed paraffin-embedded sections) - Anti-ATOX1 antibody [EPR10352] (ab154179)



Western blot - Anti-ATOX1 antibody [EPR10352]
(ab154179)

All lanes : Anti-ATOX1 antibody [EPR10352] (ab154179) at 1/1000 dilution

Lane 1 : Wild-type HEK-293 cell lysate

Lane 2 : ATOX1 knockout HEK-293T cell lysate

Lysates/proteins at 20 µg per lane.

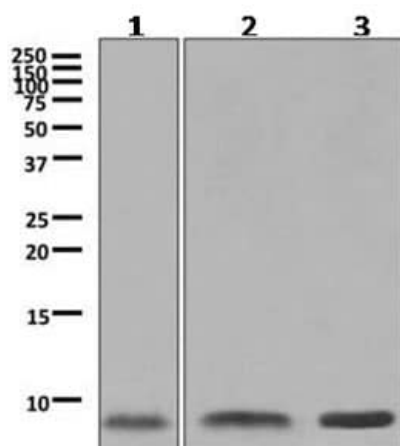
Performed under reducing conditions.

Predicted band size: 7 kDa

Observed band size: 7 kDa

Lanes 1 - 2: Merged signal (red and green). Green - ab154179 observed at 7 kDa. Red - loading control **ab7291** (Mouse anti-Alpha Tubulin [DM1A]) observed at 55kDa.

ab154179 was shown to react with ATOX1 in HEK-293 wild-type cells in western blot with loss of signal observed in ATOX1 knockout sample. HEK-293 wild-type and ATOX1 knockout cell lysates were subjected to SDS-PAGE. Membranes were blocked in 3% milk in TBS-T (0.1% Tween®) before incubation with ab154179 and **ab7291** (Mouse anti-Alpha Tubulin [DM1A]) overnight at 4°C at a 1 in 1000 Dilution and a 1 in 20000 dilution respectively. Blots were incubated with Goat anti-Rabbit IgG H&L (IRDye® 800CW) preabsorbed (**ab216773**) and Goat anti-Mouse IgG H&L (IRDye® 680RD) preabsorbed (**ab216776**) secondary antibodies at 1 in 20000 dilution for 1 hour at room temperature before imaging.



Western blot - Anti-ATOX1 antibody [EPR10352]
(ab154179)

All lanes : Anti-ATOX1 antibody [EPR10352] (ab154179) at 1/1000 dilution

Lane 1 : HepG2 cell lysates

Lane 2 : HeLa cell lysates

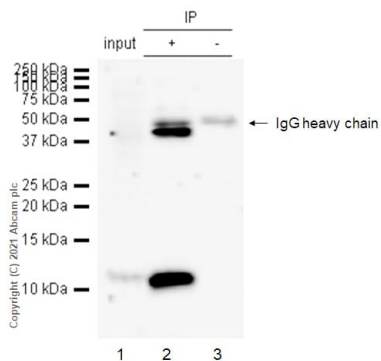
Lane 3 : 293T cell lysates

Lysates/proteins at 10 µg per lane.

Secondary

All lanes : HRP labelled goat anti-rabbit at 1/2000 dilution

Predicted band size: 7 kDa



Immunoprecipitation - Anti-ATOX1 antibody
[EPR10352] (ab154179)

ATOX1 was immunoprecipitated from 0.35 mg HeLa (Human cervix adenocarcinoma epithelial cell) whole cell lysate 10 µg with 154179 at 1/20 dilution (2µg). VeriBlot for IP Detection Reagent (HRP) (**ab131366**) was used at 1/5000 dilution.

Lane 1: HeLa (Human cervix adenocarcinoma epithelial cell) whole cell lysate 10 µg

Lane 2: ab154179 IP in HeLa whole cell lysate

Lane 3: Rabbit monoclonal IgG (**ab172730**) instead of ab154179 in HeLa whole cell lysate

Blocking and dilution buffer and concentration: 5% NFDM/TBST.

Why choose a recombinant antibody?



Research with confidence
Consistent and reproducible results



Long-term and scalable supply
Recombinant technology



Success from the first experiment
Confirmed specificity



Ethical standards compliant
Animal-free production

Anti-ATOX1 antibody [EPR10352] (ab154179)

Please note: All products are "FOR RESEARCH USE ONLY. NOT FOR USE IN DIAGNOSTIC PROCEDURES"

Our Abpromise to you: Quality guaranteed and expert technical support

- Replacement or refund for products not performing as stated on the datasheet
- Valid for 12 months from date of delivery
- Response to your inquiry within 24 hours
- We provide support in Chinese, English, French, German, Japanese and Spanish
- Extensive multi-media technical resources to help you
- We investigate all quality concerns to ensure our products perform to the highest standards

If the product does not perform as described on this datasheet, we will offer a refund or replacement. For full details of the Abpromise, please visit <https://www.abcam.co.jp/abpromise> or contact our technical team.

Terms and conditions

- Guarantee only valid for products bought direct from Abcam or one of our authorized distributors