

### Anti-ATG8 antibody ab4753

★★★★☆ [4 Abreviews](#) [10 References](#) [画像数 2](#)

#### 製品の概要

製品名	Anti-ATG8 antibody
製品の詳細	Rabbit polyclonal to ATG8
由来種	Rabbit
アプリケーション	<b>適用あり:</b> WB, ELISA
種交差性	<b>交差種:</b> <i>Saccharomyces cerevisiae</i>
免疫原	Recombinant full length protein ( <i>S. cerevisiae</i> ).
特記事項	<p>The Life Science industry has been in the grips of a reproducibility crisis for a number of years. Abcam is leading the way in addressing this with our range of recombinant monoclonal antibodies and knockout edited cell lines for gold-standard validation. Please check that this product meets your needs before purchasing.</p> <p>If you have any questions, special requirements or concerns, please send us an inquiry and/or contact our Support team ahead of purchase. Recommended alternatives for this product can be found below, along with publications, customer reviews and Q&amp;As</p>

#### 製品の特性

製品の状態	Liquid
保存方法	Shipped at 4°C. Store at +4°C short term (1-2 weeks). Upon delivery aliquot. Store at -20°C or -80°C. Avoid freeze / thaw cycle.
バッファー	<p>pH: 6.50</p> <p>Preservative: 0.01% Sodium azide</p> <p>Constituents: 0.42% Potassium phosphate, 0.87% Sodium chloride</p>
精製度	IgG fraction
特記事項 (精製)	Purified from monospecific antiserum by a multi-step process which includes delipidation, salt fractionation and ion exchange chromatography followed by extensive dialysis against the buffer stated above. Assay by immunoelectrophoresis resulted in a single precipitin arc against anti-rabbit serum.
ポリ/モノ	ポリクローナル
アイソタイプ	IgG

## アプリケーション

### The Abpromise guarantee

**Abpromise保証は、次のテスト済みアプリケーションにおけるab4753の使用に適用されます**

アプリケーションノートには、推奨の開始希釈率がありますが、適切な希釈率につきましてはご検討ください。

アプリケーション	Abreviews	特記事項
WB	★★★★☆ (4)	1/4000 - 1/8000. Detects a band of approximately 14 kDa. This antibody using the specified conditions may recognize other prominent intrinsic bands (UBLs or their conjugates). Other intrinsic bands are readily detectable in yeast lysates at lower antibody dilutions.
ELISA		1/20000 - 1/100000.

## ターゲット情報

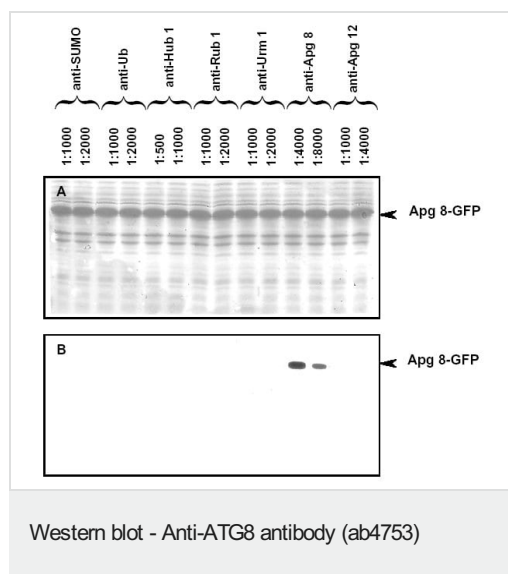
### 関連性

ATG8 is a ubiquitin-like protein in yeast required for autophagy (intracellular bulk protein degradation). Starved yeast cells take up their own cytoplasm into vacuoles through autophagic bodies. ATG8 is required for autophagy: modified by the serial action of ATG4, ATG7, and ATG3, and conjugated at the C terminus with phosphatidylethanolamine, to become the form essential for generation of autophagosomes. ATG8 interacts also with the endoplasmic reticulum to Golgi v-SNARE protein BET1 and the vacuolar v-SNARE protein NYV1. ATG8 is highly conserved, with apparent homologues in the worm, mammals and plants. In higher eukaryotes, ATG8 consists of a multigene family.

### 細胞内局在

Cytoplasmic

## 画像



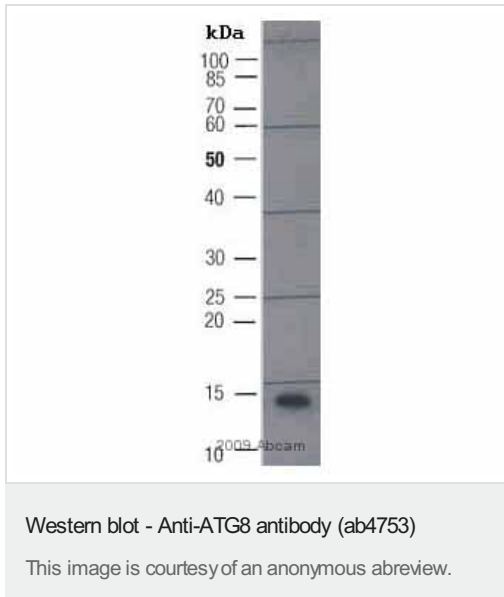
Ab4753, generated by immunization with recombinant yeast ATG8 (or Apg 8), was tested by immunoblot with other anti-UBL (Ubiquitin-like modifier) antibodies against E.coli lysates expressing the ATG8-GFP fusion protein (Apg 8-GFP in both panels)). All UBLs possess limited homology to Ubiquitin and to each other, therefore it is important to know the degree of reactivity of each antibody against each UBL.

Panel A shows total protein staining using ponceau.

Panel B shows specific reaction with ATG8 (Apg 8) using a 1:4,000 and 1:8,000 dilution of ab4753 followed by reaction with a 1:15,000 dilution of HRP Goat-a-Rabbit IgG (**ab7090**). All primary antibodies were diluted in TTBS buffer supplemented with 5% non-fat milk and incubated with the membranes overnight at 4° C. E.coli lysate proteins were separated by SDS-PAGE using a 15% gel.

Similar experiments (data not shown), where other UBL fusion proteins were separated and probed with this antibody showed no

react



Anti-ATG8 antibody (ab4753) at 1/1500 dilution + Whole cell lysate prepared from Human huh-7 cells expressing the Saccharomyces cerevisiae protein at 15 µg

#### Secondary

Sheep anti-rabbit IgG conjugated to HRP at 1/7000 dilution

**Observed band size:** 15 kDa

**Exposure time:** 4 minutes

Gel run under denaturing conditions.

Primary antibody incubated for 10 minutes at 20°C.

Blocked using 0.5% milk for 1 minute at 20°C.

Detection method: Western lightning chemiluminescent reagent.

**Please note:** All products are "FOR RESEARCH USE ONLY. NOT FOR USE IN DIAGNOSTIC PROCEDURES"

#### Our Abpromise to you: Quality guaranteed and expert technical support

- Replacement or refund for products not performing as stated on the datasheet
- Valid for 12 months from date of delivery
- Response to your inquiry within 24 hours
- We provide support in Chinese, English, French, German, Japanese and Spanish
- Extensive multi-media technical resources to help you
- We investigate all quality concerns to ensure our products perform to the highest standards

If the product does not perform as described on this datasheet, we will offer a refund or replacement. For full details of the Abpromise, please visit <https://www.abcam.co.jp/abpromise> or contact our technical team.

#### Terms and conditions

- Guarantee only valid for products bought direct from Abcam or one of our authorized distributors