


Anti-ATG3 antibody [EPR4802] ab108282

KO 評価済 リコンビナント RabMAb

5 References 画像数 4

製品の概要

製品名	Anti-ATG3 antibody [EPR4802]
製品の詳細	Rabbit monoclonal [EPR4802] to ATG3
由来種	Rabbit
アプリケーション	適用あり: WB, Flow Cyt (Intra) 適用なし: ICC/IF or IHC-P
種交差性	交差種: Human 交差が予測される動物種: Mouse, Rat 
免疫原	Synthetic peptide. This information is proprietary to Abcam and/or its suppliers.
ポジティブ・コントロール	WB: HEK293T, K562, HeLa or Jurkat cell lysates. Flow Cyt (intra): Permeabilized Jurkat cells.
特記事項	<p>This product is a recombinant monoclonal antibody, which offers several advantages including:</p> <ul style="list-style-type: none"> - High batch-to-batch consistency and reproducibility - Improved sensitivity and specificity - Long-term security of supply - Animal-free production <p>For more information see here.</p> <p>Our RabMAb[®] technology is a patented hybridoma-based technology for making rabbit monoclonal antibodies. For details on our patents, please refer to RabMAb[®] patents.</p>

製品の特性

製品の状態	Liquid
保存方法	Shipped at 4°C. Store at -20°C. Stable for 12 months at -20°C.
バッファー	pH: 7.20 Preservative: 0.05% Sodium azide Constituents: 0.1% BSA, 40% Glycerol (glycerin, glycerine), 9.85% Tris glycine, 50% Tissue culture supernatant
精製度	Tissue culture supernatant
ポリ/モノ	モノクローナル
クローン名	EPR4802

アイソタイプIgG

アプリケーション

The Abpromise guarantee **Abpromise保証は、** 次のテスト済みアプリケーションにおけるab108282の使用に適用されます
アプリケーションノートには、推奨の開始希釈率がありますが、適切な希釈率につきましてはご検討ください。

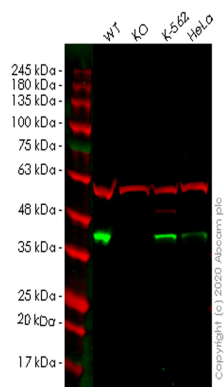
アプリケーション	Abreviews	特記事項
WB		1/1000 - 1/10000. Detects a band of approximately 40 kDa (predicted molecular weight: 36 kDa).
Flow Cyt (Intra)		1/10 - 1/100. ab172730 - Rabbit monoclonal IgG, is suitable for use as an isotype control with this antibody.

追加情報 Is unsuitable for ICC/IF or IHC-P.

ターゲット情報

機能	E2-like enzyme involved in autophagy and mitochondrial homeostasis. Catalyzes the conjugation of ATG8-like proteins (GABARAP, GABARAPL1, GABARAPL2 or MAP1LC3A) to phosphatidylethanolamine (PE). PE-conjugation to ATG8-like proteins is essential for autophagy. Preferred substrate is MAP1LC3A. Also acts as an autocatalytic E2-like enzyme, catalyzing the conjugation of ATG12 to itself, ATG12 conjugation to ATG3 playing a role in mitochondrial homeostasis but not in autophagy. ATG7 (E1-like enzyme) facilitates this reaction by forming an E1-E2 complex with ATG3.
組織特異性	Widely expressed, with a highest expression in heart, skeletal muscle, kidney, liver and placenta.
配列類似性	Belongs to the ATG3 family.
翻訳後修飾	Conjugated to ATG12 at Lys-243. ATG12-conjugation plays a role in regulation of mitochondrial homeostasis and cell death, while it is not involved in PE-conjugation to ATG8-like proteins and autophagy.
細胞内局在	Cytoplasm.

画像



Western blot - Anti-ATG3 antibody [EPR4802]
(ab108282)

All lanes : Anti-ATG3 antibody [EPR4802] (ab108282) at 1/1000 dilution

Lane 1 : Wild-type HEK293T cell lysate

Lane 2 : ATG3 knockout HEK293T cell lysate

Lane 3 : K-562 cell lysate

Lane 4 : HeLa cell lysate

Lysates/proteins at 20 µg per lane.

Secondary

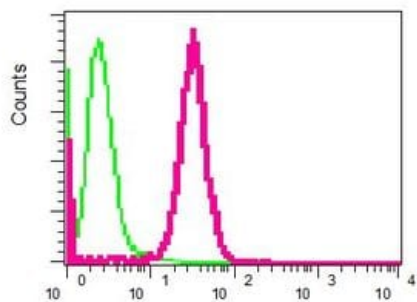
All lanes : Goat anti-Rabbit IgG H&L (IRDye® 800CW) preadsorbed ([ab216773](#)) at 1/10000 dilution

Predicted band size: 36 kDa

Observed band size: 40 kDa

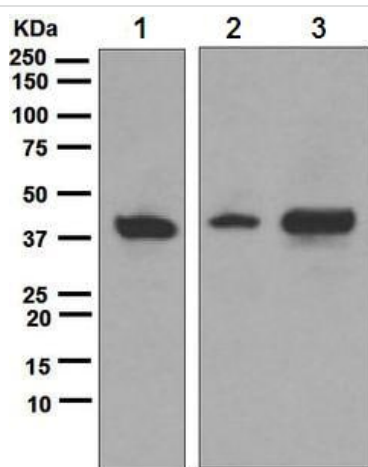
Lanes 1-4: Merged signal (red and green). Green - ab108282 observed at 40 kDa. Red - loading control [ab7291](#) observed at 50 kDa.

ab108282 Anti-ATG3 antibody [EPR4802] was shown to specifically react with ATG3 in wild-type HEK293T cells. Loss of signal was observed when knockout cell line [ab266707](#) (knockout cell lysate [ab257363](#)) was used. Wild-type and ATG3 knockout samples were subjected to SDS-PAGE. ab108282 and Anti-alpha Tubulin antibody [DM1A] - Loading Control ([ab7291](#)) were incubated overnight at 4°C at 1 in 1000 dilution and 1 in 20000 dilution respectively. Blots were developed with Goat anti-Rabbit IgG H&L (IRDye® 800CW) preadsorbed ([ab216773](#)) and Goat anti-Mouse IgG H&L (IRDye® 680RD) preadsorbed ([ab216776](#)) secondary antibodies at 1 in 20000 dilution for 1 hour at room temperature before imaging.



Flow Cytometry (Intracellular) - Anti-ATG3 antibody
[EPR4802] (ab108282)

Intracellular flow cytometric analysis of permeabilized Jurkat cells using ab108282 at 1/10 (red) or a rabbit IgG (negative) (green).



Western blot - Anti-ATG3 antibody [EPR4802]
(ab108282)

All lanes : Anti-ATG3 antibody [EPR4802] (ab108282) at 1/1000 dilution

Lane 1 : K562 cell lysate

Lane 2 : HeLa cell lysate

Lane 3 : Jurkat cell lysate

Lysates/proteins at 10 µg per lane.

Secondary

All lanes : HRP labelled goat anti-rabbit at 1/2000 dilution

Predicted band size: 36 kDa

Observed band size: 40 kDa

Why choose a recombinant antibody?



Research with confidence
Consistent and reproducible results



Long-term and scalable supply
Recombinant technology



Success from the first experiment
Confirmed specificity



Ethical standards compliant
Animal-free production

Anti-ATG3 antibody [EPR4802] (ab108282)

Our Abpromise to you: Quality guaranteed and expert technical support

- Replacement or refund for products not performing as stated on the datasheet
- Valid for 12 months from date of delivery
- Response to your inquiry within 24 hours
- We provide support in Chinese, English, French, German, Japanese and Spanish
- Extensive multi-media technical resources to help you
- We investigate all quality concerns to ensure our products perform to the highest standards

If the product does not perform as described on this datasheet, we will offer a refund or replacement. For full details of the Abpromise, please visit <https://www.abcam.co.jp/abpromise> or contact our technical team.

Terms and conditions

- Guarantee only valid for products bought direct from Abcam or one of our authorized distributors