

Anti-ATG12 antibody - N-terminal ab228494

画像数 1

製品の概要

製品名	Anti-ATG12 antibody - N-terminal
製品の詳細	Rabbit polyclonal to ATG12 - N-terminal
由来種	Rabbit
アプリケーション	適用あり: Flow Cyt (Intra)
種交差性	交差種: Human
免疫原	Synthetic peptide corresponding to Human ATG12 (N terminal). An adjuvant has been used to orchestrate/boost the immune response. Database link: O94817
ポジティブ・コントロール	Flow Cyt (Intra): SH-SY5Y cells.
特記事項	<p>The Life Science industry has been in the grips of a reproducibility crisis for a number of years. Abcam is leading the way in addressing this with our range of recombinant monoclonal antibodies and knockout edited cell lines for gold-standard validation. Please check that this product meets your needs before purchasing.</p> <p>If you have any questions, special requirements or concerns, please send us an inquiry and/or contact our Support team ahead of purchase. Recommended alternatives for this product can be found below, along with publications, customer reviews and Q&As</p>

製品の特性

製品の状態	Lyophilized:Reconstitute in 500 µl of sterile water. Centrifuge to remove any insoluble material. After reconstitution keep aliquots at -20°C for a higher stability, and at 4°C with an appropriate antibacterial agent. Glycerol (1:1) may be added for an additional stability.
保存方法	Shipped at 4°C. Store at +4°C short term (1-2 weeks). Upon delivery aliquot. Store at -20°C long term. Avoid freeze / thaw cycle.
バッファー	pH: 7
精製度	Protein G purified
ポリ/モノ	ポリクローナル
アイソタイプ	IgG

アプリケーション

The Abpromise guarantee

Abpromise保証は、次のテスト済みアプリケーションにおけるab228494の使用に適用されます

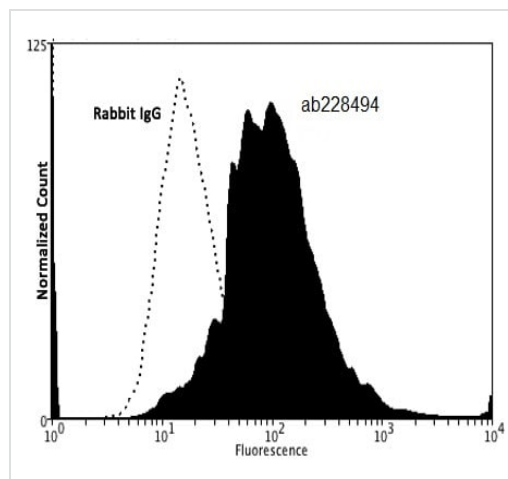
アプリケーションノートには、推奨の開始希釈率がありますが、適切な希釈率につきましてはご確認ください。

アプリケーション	Abreviews	特記事項
Flow Cyt (Intra)		Use 2µg for 10 ⁶ cells.

ターゲット情報

機能	Ubiquitin-like protein required for autophagy. Conjugated to ATG3 and ATG5.
組織特異性	Ubiquitous.
配列類似性	Belongs to the ATG12 family.
ドメイン	Shares weak sequence similarity with ubiquitin family, but contains an 'ubiquitin superfold' and the C-terminal Gly is required for isopeptide linkage.
細胞内局在	Cytoplasm.

画像



Flow Cytometry (Intracellular) - Anti-ATG12 antibody
- N-terminal (ab228494)

Flow cytometric analysis of methanol-fixed, 0.1% Tween-20-permeabilized SH-SY5Y (human neuroblastoma cell line from bone marrow) cell line labeling ATG12 with ab228494 at 2 µg per 10⁶ cells (black) compared with a Rabbit IgG Control (white). Donkey anti-Rabbit PE at 1/100 dilution was used as the secondary antibody.

Please note: All products are "FOR RESEARCH USE ONLY. NOT FOR USE IN DIAGNOSTIC PROCEDURES"

Our Abpromise to you: Quality guaranteed and expert technical support

- Replacement or refund for products not performing as stated on the datasheet
- Valid for 12 months from date of delivery
- Response to your inquiry within 24 hours
- We provide support in Chinese, English, French, German, Japanese and Spanish
- Extensive multi-media technical resources to help you

- We investigate all quality concerns to ensure our products perform to the highest standards

If the product does not perform as described on this datasheet, we will offer a refund or replacement. For full details of the Abpromise, please visit <https://www.abcam.co.jp/abpromise> or contact our technical team.

Terms and conditions

- Guarantee only valid for products bought direct from Abcam or one of our authorized distributors