

Anti-ATF6 antibody [EPR22690-84] - ChIP Grade ab227830

KO 評価済 リコンビナント RabMAb

★★★★☆ 3 Abreviews 9 References 画像数 8

製品の概要

製品名	Anti-ATF6 antibody [EPR22690-84] - ChIP Grade
製品の詳細	Rabbit monoclonal [EPR22690-84] to ATF6 - ChIP Grade
由来種	Rabbit
アプリケーション	適用あり: WB, IHC-P, ChIP, IP, ChIC/CUT&RUN-seq 適用なし: Flow Cyt or ICC/IF
種交差性	交差種: Mouse, Human
免疫原	Recombinant fragment. This information is proprietary to Abcam and/or its suppliers.
ポジティブ・コントロール	WB: HAP1 and HeLa whole cell lysates. IHC-P: Human kidney tissue. IP: HeLa whole cell lysate. ChIP: Chromatin prepared from RAW 264.7 (treated with tunicamycin) and HeLa (treated with thapsigargin) cells. ChIC/CUT&RUN-Seq: HeLa cells.
特記事項	<p>This product is a recombinant monoclonal antibody, which offers several advantages including:</p> <ul style="list-style-type: none"> - High batch-to-batch consistency and reproducibility - Improved sensitivity and specificity - Long-term security of supply - Animal-free production <p>For more information see here.</p> <p>Our RabMAb[®] technology is a patented hybridoma-based technology for making rabbit monoclonal antibodies. For details on our patents, please refer to RabMAb[®] patents.</p>

製品の特性

製品の状態	Liquid
保存方法	Shipped at 4°C. Store at +4°C short term (1-2 weeks). Upon delivery aliquot. Store at -20°C long term. Avoid freeze / thaw cycle.
バッファー	pH: 7.2 Preservative: 0.01% Sodium azide Constituents: PBS, 40% Glycerol (glycerin, glycerine), 0.05% BSA
精製度	Protein A purified
ポリ/モノ	モノクローナル
クローン名	EPR22690-84

アイソタイプ

IgG

アプリケーション

The Abpromise guarantee Abpromise保証は、 次のテスト済みアプリケーションにおけるab227830の使用に適用されます
アプリケーションノートには、推奨の開始希釈率がありますが、適切な希釈率につきましてはご検討ください。

アプリケーション	Abreviews	特記事項
WB	★★★★★ (1)	1/1000. Predicted molecular weight: 74 kDa.
IHC-P		1/1000. Perform heat mediated antigen retrieval with Tris/EDTA buffer pH 9.0 before commencing with IHC staining protocol.
ChIP		Use 5 µg for 25 µg of chromatin.
IP		1/30.
ChIC/CUT&RUN-seq		Use at an assay dependent concentration. 5µg

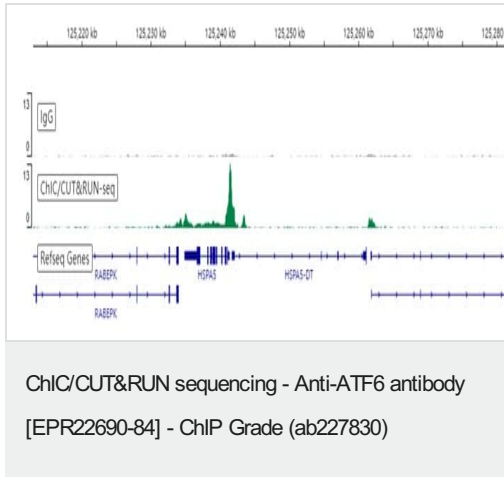
追加情報

Is unsuitable for Flow Cyt or ICC/IF.

ターゲット情報

機能	Transcription factor that acts during endoplasmic reticulum stress by activating unfolded protein response target genes. Binds DNA on the 5'-CCAC[GA]-3'half of the ER stress response element (ERSE) (5'-CCAAT-N(9)-CCAC[GA]-3') and of ERSE II (5'-ATTGG-N-CCACG-3'). Binding to ERSE requires binding of NF-Y to ERSE. Could also be involved in activation of transcription by the serum response factor.
組織特異性	Ubiquitous.
配列類似性	Belongs to the bZIP family. ATF subfamily. Contains 1 bZIP domain.
ドメイン	The basic domain functions as a nuclear localization signal. The basic leucine-zipper domain is sufficient for association with the NF-Y trimer and binding to ERSE.
翻訳後修飾	During unfolded protein response an approximative 50 kDa fragment containing the cytoplasmic transcription factor domain is released by proteolysis. The cleavage seems to be performed sequentially by site-1 and site-2 proteases. N-glycosylated. The glycosylation status may serve as a sensor for ER homeostasis, resulting in ATF6 activation to trigger the unfolded protein response (UPR). Phosphorylated in vitro by MAPK14/P38MAPK.
細胞内局在	Endoplasmic reticulum membrane and Nucleus. Under ER stress the cleaved N-terminal cytoplasmic domain translocates into the nucleus.

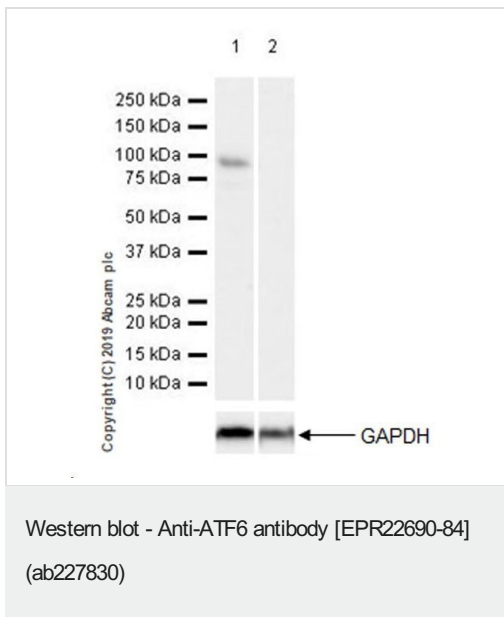
画像



ChIC/CUT&RUN was performed using a pAG-MNase at a final concentration of 700 ng/mL, 2×10^5 HeLa cells treated with Thapsigargin ($0.5 \mu\text{M}$ for 24h) and $5 \mu\text{g}$ of ab227830 [EPR22690-84]. The resulting DNA was sequenced on the Illumina NovaSeq 6000 to a depth of 10 million reads. The negative IgG control **ab172730** is also shown.

Additional screenshots of mapped reads can be downloaded [here](#).

The University of Geneva owns patents relevant to ChIC (Chromatin Immuno-Cleavage) methods.



All lanes : Anti-ATF6 antibody [EPR22690-84] - ChIP Grade (ab227830) at 1/1000 dilution

Lane 1 : Wild type HAP1 whole cell lysate

Lane 2 : ATF6 knockout HAP1 whole cell lysate

Lysates/proteins at $20 \mu\text{g}$ per lane.

Secondary

All lanes : Goat Anti-Rabbit IgG H&L (HRP) (**ab97051**) at 1/100000 dilution

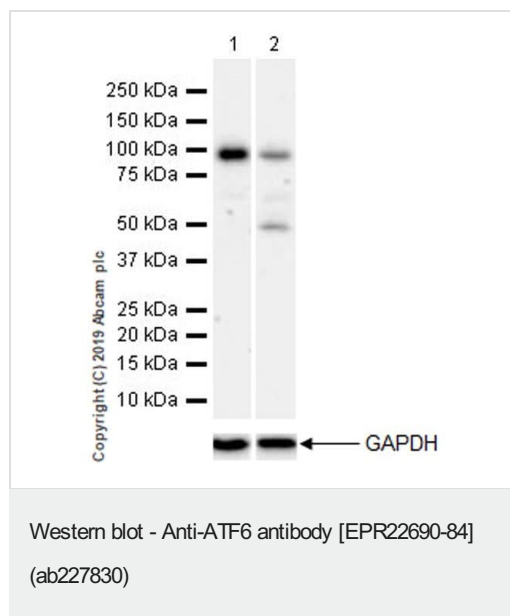
Predicted band size: 74 kDa

Observed band size: 90 kDa

ab227830 was shown to specifically react with ATF6 in wild-type HAP1 cells as signal was lost in ATF6 knockout cells. Wild-type and ATF6 knockout samples were subjected to SDS-PAGE. ab227830 and **ab181602** (Rabbit anti-GAPDH loading control) were incubated 1 hour at room temperature at 1/1000 dilution and 1/200,000 dilution respectively. Blots were developed with Goat Anti-Rabbit IgG, (H+L), Peroxidase conjugated (**ab97051**) secondary antibody at 1/20,000 dilution for 1 hour at room temperature before imaging.

Exposure time 62 seconds.

Blocking/Diluting buffer and concentration: 5% NFDm/TBST.



All lanes : Anti-ATF6 antibody [EPR22690-84] - ChIP Grade (ab227830) at 1/1000 dilution

Lane 1 : Untreated HeLa (human cervix adenocarcinoma epithelial cell) whole cell lysate

Lane 2 : HeLa treated with 1 μ g thapsigargin for 1 hour, whole cell lysate

Lysates/proteins at 10 μ g per lane.

Secondary

All lanes : Goat Anti-Rabbit IgG H&L (HRP) ([ab97051](#)) at 1/100000 dilution

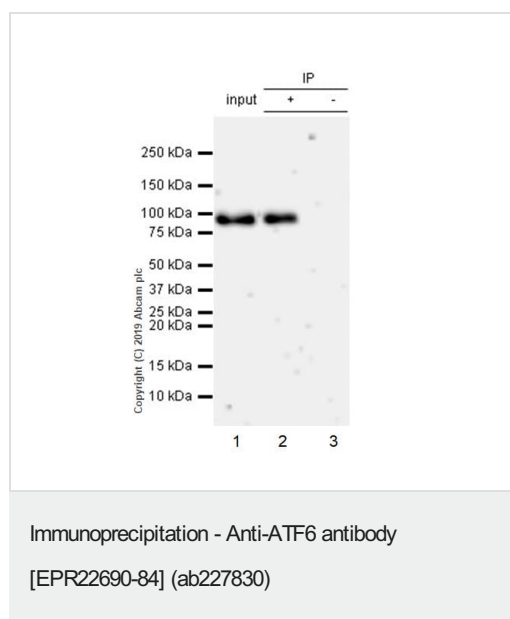
Predicted band size: 74 kDa

Observed band size: 50,90 kDa

ATF6 is cleaved upon ER stress and the molecular weight observed is consistent with what has been described in the literature (PMID: 25149687; 11163209).

Exposure time 3 minutes.

Blocking and diluting buffer and concentration: 5% NFDm/TBST.



ATF6 was immunoprecipitated from 0.35 mg HeLa (human cervix adenocarcinoma epithelial cell) whole cell lysate with ab227830 at 1/30 dilution (2 μ g in 0.35mg lysates). Western blot was performed on the immunoprecipitate using ab227830 1/1000 dilution (0.5 μ g/ml). VeriBlot for IP Detection Reagent (HRP) ([ab131366](#)) was used at 1/5000 dilution.

Lane 1: HeLa (human cervix adenocarcinoma epithelial cell) whole cell lysate 10 μ g

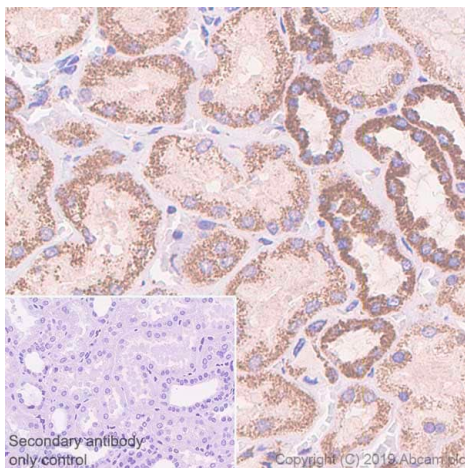
Lane 2: [ab254324](#) IP in HeLa whole cell lysate

Lane 3: Rabbit monoclonal IgG ([ab172730](#)) instead of ab227830 in HeLa whole cell lysate.

Blocking and dilution buffer and concentration: 5% NFDm/TBST.

Exposure time: 3 min.

Lysate were made freshly and used in IP test immediately to minimize protein degradation. Incubation time was 2h.

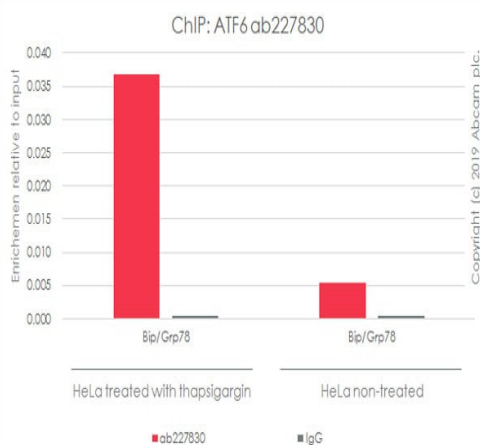


Immunohistochemistry (Formalin/PFA-fixed paraffin-embedded sections) - Anti-ATF6 antibody [EPR22690-84] (ab227830)

Immunohistochemical analysis of paraffin-embedded Human kidney tissue labeling ATF6 with ab227830 at 1/1000 dilution (0.566 µg/ml) followed by a ready to use Rabbit specific IHC polymer detection kit HRP/DAB (**ab209101**). Positive staining on human kidney (PMID: 25725420) is observed. The section was incubated with ab227830 for 30 mins at room temperature.

The immunostaining was performed on a Leica Biosystems BOND® RX instrument. Counterstained with Hematoxylin. Heat mediated antigen retrieval with Tris-EDTA buffer (pH 9.0, epitope retrieval solution 2) for 20mins.

Secondary antibody only control: Used PBS instead of primary antibody, secondary antibody is a ready to use Rabbit specific IHC polymer detection kit HRP/DAB (**ab209101**).



ChIP - Anti-ATF6 antibody [EPR22690-84] (ab227830)

Chromatin was prepared from HeLa cells treated with thapsigargin (1 µM, 1 h) according to the Abcam Dual-X-ChIP protocol*. Cells were fixed with 1.5 mM EGS for 30 mins and then formaldehyde for 10 min.

The ChIP was performed with 25 µg of chromatin, 5 µg of ab227830 (red), or 5 µg of rabbit normal IgG **ab172730** (gray) and 20 µl of Protein A/G sepharose beads. The immunoprecipitated DNA was quantified by real time PCR (Taqman approach for active and inactive loci, Sybr green approach for heterochromatic loci).

Primers and probes are from paper PMID: 17535801.

*[https://www.abcam.com/resources?](https://www.abcam.com/resources?keywords=X%20ChIP%20protocol)

keywords=X%20ChIP%20protocol



ChIP - Anti-ATF6 antibody [EPR22690-84]
(ab227830)

Chromatin was prepared from RAW 264.7 cells treated with tunicamycin (5 ug/ml, 4 h) according to the Abcam Dual-X-ChIP protocol*. Cells were fixed with 1.5 mM EGS for 30 mins and then formaldehyde for 10 min.

The ChIP was performed with 25 µg of chromatin, 5 µg of ab227830 (red), or 5 µg of rabbit normal IgG **ab172730** (gray) and 20 µl of Protein A/G sepharose beads. The immunoprecipitated DNA was quantified by real time PCR (Taqman approach for active and inactive loci, Sybr green approach for heterochromatic loci). Primers and probes are from paper PMID: PMC5179193.

*[https://www.abcam.com/resources?](https://www.abcam.com/resources?keywords=X%20ChIP%20protocol)

[keywords=X%20ChIP%20protocol](https://www.abcam.com/resources?keywords=X%20ChIP%20protocol)

Why choose a recombinant antibody?

Research with confidence
Consistent and reproducible results

Long-term and scalable supply
Recombinant technology

Success from the first experiment
Confirmed specificity

Ethical standards compliant
Animal-free production

Anti-ATF6 antibody [EPR22690-84] - ChIP Grade
(ab227830)

Please note: All products are "FOR RESEARCH USE ONLY. NOT FOR USE IN DIAGNOSTIC PROCEDURES"

Our Abpromise to you: Quality guaranteed and expert technical support

- Replacement or refund for products not performing as stated on the datasheet
- Valid for 12 months from date of delivery
- Response to your inquiry within 24 hours
- We provide support in Chinese, English, French, German, Japanese and Spanish
- Extensive multi-media technical resources to help you
- We investigate all quality concerns to ensure our products perform to the highest standards

If the product does not perform as described on this datasheet, we will offer a refund or replacement. For full details of the Abpromise, please visit <https://www.abcam.co.jp/abpromise> or contact our technical team.

Terms and conditions

- Guarantee only valid for products bought direct from Abcam or one of our authorized distributors