

Anti-ATF2 antibody [EPR22938-114] ab239361

リコンビナント RabMAb

★★★★★ [1 Abreviews](#) [4 References](#) [画像数 11](#)

製品の概要

製品名	Anti-ATF2 antibody [EPR22938-114]
製品の詳細	Rabbit monoclonal [EPR22938-114] to ATF2
由来種	Rabbit
アプリケーション	適用あり: Flow Cyt (Intra), WB, IP, IHC-P 適用なし: ChIP or ICC/IF
種交差性	交差種: Mouse, Rat, Human
免疫原	Recombinant fragment. This information is proprietary to Abcam and/or its suppliers.
ポジティブ・コントロール	WB: NIH/3T3, RAW 264.7, HEK-293T, K562, PC-12 and Jurkat whole cell lysate. Mouse brain tissue lysate. Rat spleen tissue lysate. IHC-P: Human kidney carcinoma tissue. Human, mouse and rat kidney tissue. Flow Cyt (intra): RAW 264.7 and NIH/3T3 cells. IP: NIH/3T3 whole cell lysate.
特記事項	This product is a recombinant monoclonal antibody, which offers several advantages including: <ul style="list-style-type: none">- High batch-to-batch consistency and reproducibility- Improved sensitivity and specificity- Long-term security of supply- Animal-free production For more information see here . Our RabMAb [®] technology is a patented hybridoma-based technology for making rabbit monoclonal antibodies. For details on our patents, please refer to RabMAb[®] patents .

製品の特性

製品の状態	Liquid
保存方法	Shipped at 4°C. Store at +4°C short term (1-2 weeks). Upon delivery aliquot. Store at -20°C long term. Avoid freeze / thaw cycle.
バッファー	pH: 7.2 Preservative: 0.01% Sodium azide Constituents: PBS, 40% Glycerol (glycerin, glycerine), 0.05% BSA
精製度	Protein A purified
ポリ/モノ	モノクローナル

クローン名 EPR22938-114
アイソタイプ IgG

アプリケーション

The Abpromise guarantee **Abpromise保証は、**次のテスト済みアプリケーションにおけるab239361の使用に適用されず
アプリケーションノートには、推奨の開始希釈率がありますが、適切な希釈率につきましてはご確認ください。

アプリケーション	Abreviews	特記事項
Flow Cyt (Intra)		1/40.
WB		1/1000.
IP		1/30.
IHC-P		1/250. Perform heat mediated antigen retrieval with Tris/EDTA buffer pH 9.0 before commencing with IHC staining protocol.

追加情報 Is unsuitable for ChIP or ICC/IF.

ターゲット情報

機能 Transcriptional activator, probably constitutive, which binds to the cAMP-responsive element (CRE) (consensus: 5'-GTGACGT[AC][AG]-3'), a sequence present in many viral and cellular promoters. Interaction with JUN redirects JUN to bind to CRES preferentially over the 12-O-tetradecanoylphorbol-13-acetate response elements (TRES) as part of an ATF2/JUN complex.

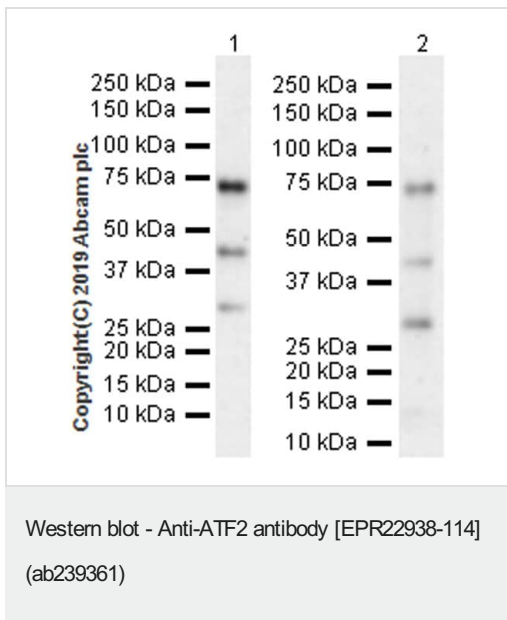
組織特異性 Abundant expression seen in the brain.

配列類似性 Belongs to the bZIP family. ATF subfamily.
Contains 1 bZIP domain.
Contains 1 C2H2-type zinc finger.

翻訳後修飾 Phosphorylation of Thr-69 and Thr-71 by MAPK14 causes increased transcriptional activity. Also phosphorylated and activated by JNK.

細胞内局在 Nucleus.

画像



All lanes : Anti-ATF2 antibody [EPR22938-114] (ab239361) at 1/1000 dilution

Lane 1 : PC-12 (rat adrenal gland pheochromocytoma), whole cell lysate

Lane 2 : Rat spleen tissue lysate

Lysates/proteins at 20 µg per lane.

Secondary

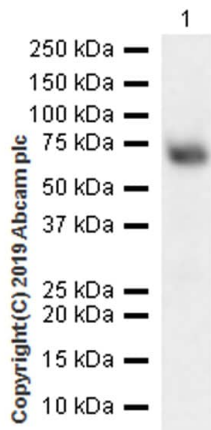
All lanes : Goat Anti-Rabbit IgG H&L (HRP) ([ab97051](#)) at 1/100000 dilution

Observed band size: 70 kDa

The molecular weight and degraded fragments observed are consistent with what has been described in the literature (PMID: 9488727, 10207054, 26901653). Suggest use freshly made lysate to minimize protein degradation.

Exposure time: 3 minutes.

Blocking and Diluting Buffer and concentration: 5% NFDM/TBST.



Western blot - Anti-ATF2 antibody [EPR22938-114] (ab239361)

Anti-ATF2 antibody [EPR22938-114] (ab239361) at 1/1000 dilution
+ Mouse brain tissue lysate at 20 μ g

Secondary

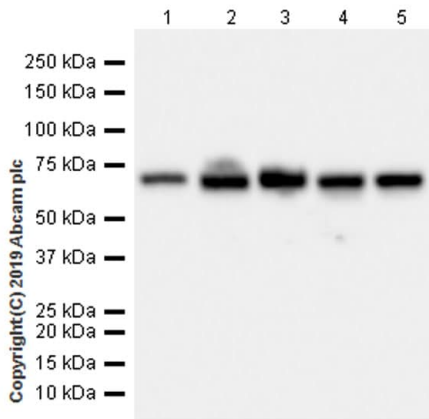
Goat Anti-Rabbit IgG H&L (HRP) ([ab97051](#)) at 1/100000 dilution

Observed band size: 70 kDa

The molecular weight observed is consistent with what has been described in the literature (PMID:26901653).

Exposure time: 3 minutes.

Blocking and Diluting Buffer and concentration: 5% NFDm/TBST.



Western blot - Anti-ATF2 antibody [EPR22938-114] (ab239361)

All lanes : Anti-ATF2 antibody [EPR22938-114] (ab239361) at 1/1000 dilution

Lane 1 : NIH/3T3 (mouse embryonic fibroblast), whole cell lysate

Lane 2 : RAW264.7 (mouse Abelson murine leukemia virus-induced tumor macrophage), whole cell lysate

Lane 3 : HEK-293T (human embryonic kidney epithelial cell), whole cell lysate

Lane 4 : K562 (human chronic myelogenous leukemia lymphoblast), whole cell lysate

Lane 5 : Jurkat (human T cell leukemia T lymphocyte), whole cell lysate

Lysates/proteins at 20 μ g per lane.

Secondary

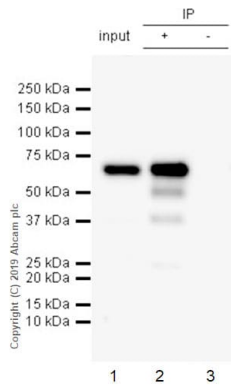
All lanes : Goat Anti-Rabbit IgG H&L (HRP) ([ab97051](#)) at 1/100000 dilution

Observed band size: 70 kDa

The molecular weight observed is consistent with what has been described in the literature (PMID:26901653).

Exposure time: 10 seconds.

Blocking and Diluting Buffer and concentration: 5% NFDm/TBST.



Immunoprecipitation - Anti-ATF2 antibody
[EPR22938-114] (ab239361)

ATF2 was immunoprecipitated from 0.35 mg NIH/3T3 (Mouse embryonic fibroblast) whole cell lysate with ab239361 at 1/30 dilution (2µg in 0.35mg lysates). Western blot was performed on the immunoprecipitate using ab239361. VeriBlot for IP Detection Reagent (HRP) (**ab131366**) was used at 1/1000 dilution.

Lane 1: NIH/3T3 (Mouse embryonic fibroblast) whole cell lysate 10µg.

Lane 2: ab239361 IP in NIH/3T3 whole cell lysate.

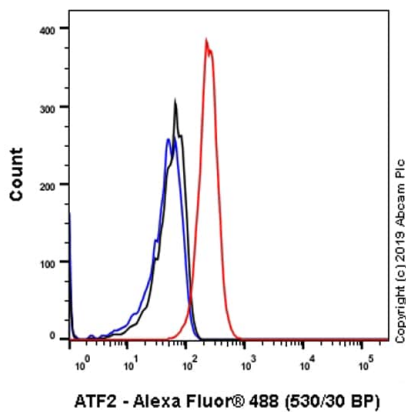
Lane 3: Rabbit monoclonal IgG (**ab172730**) instead of ab239361 in NIH/3T3 whole cell lysate.

Blocking and dilution buffer and concentration: 5% NFDm/TBST.

Exposure time: 8 seconds

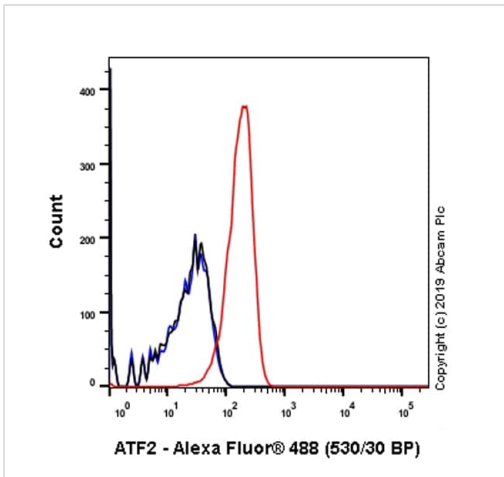
Lysate were made freshly and used in IP test immediately to minimize protein degradation. Incubation time was 2h.

The molecular weight and degraded fragments observed are consistent with what has been described in the literature (PMID: 9488727, PMID: 10207054, PMID:26901653).



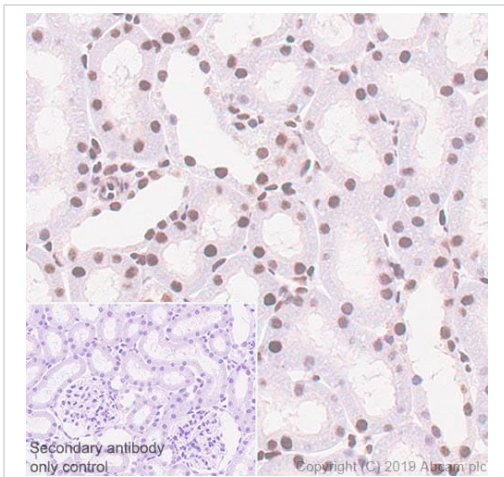
Flow Cytometry (Intracellular) - Anti-ATF2 antibody
[EPR22938-114] (ab239361)

Intracellular flow cytometric analysis of 4% paraformaldehyde fixed 90% methanol permeabilized NIH/3T3 (Mouse embryonic fibroblast) cells labeling ATF2 with ab239361 at 1/40 (Red) compared with a Rabbit monoclonal IgG (**ab172730**) (Black) isotype control and an unlabeled control (cells without incubation with primary antibody and secondary antibody) (Blue). A Goat anti rabbit IgG (Alexa Fluor® 488, **ab150077**) at 1/2000 dilution was used as the secondary antibody.



Flow Cytometry (Intracellular) - Anti-ATF2 antibody
[EPR22938-114] (ab239361)

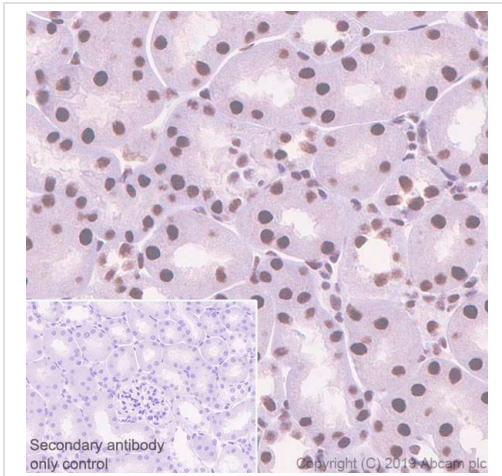
Intracellular flow cytometric analysis of 4% paraformaldehyde fixed 90% methanol permeabilized RAW 264.7 (Mouse Abelson murine leukemia virus-induced tumor macrophage) cells labeling ATF2 with ab239361 at 1/40 (Red) compared with a Rabbit monoclonal IgG (**ab172730**) (Black) isotype control and an unlabeled control (cells without incubation with primary antibody and secondary antibody) (Blue). A Goat anti rabbit IgG (Alexa Fluor[®] 488, **ab150077**) at 1/2000 dilution was used as the secondary antibody.



Immunohistochemistry (Formalin/PFA-fixed paraffin-embedded sections) - Anti-ATF2 antibody
[EPR22938-114] (ab239361)

Immunohistochemical analysis of paraffin-embedded rat kidney tissue labeling ATF2 with ab239361 at 1/250 dilution (1.76 ug/ml) followed by a ready to use Rabbit specific IHC polymer detection kit HRP/DAB (**ab209101**). Nuclear staining on rat kidney is observed. The section was incubated with ab239361 for 30 mins at room temperature. The immunostaining was performed on a Leica Biosystems BOND[®] RX instrument. Counterstained with hematoxylin. Heat mediated antigen retrieval with Tris-EDTA buffer (pH 9.0, epitope retrieval solution 2) for 20mins.

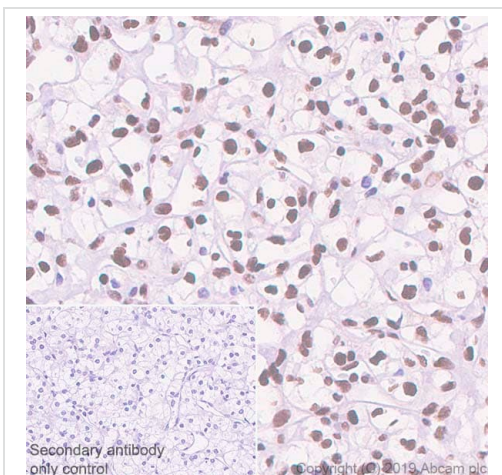
Secondary antibody only control: Secondary antibody is a ready to use Rabbit specific IHC polymer detection kit HRP/DAB (**ab209101**).



Immunohistochemistry (Formalin/PFA-fixed paraffin-embedded sections) - Anti-ATF2 antibody [EPR22938-114] (ab239361)

Immunohistochemical analysis of paraffin-embedded mouse kidney tissue labeling ATF2 with ab239361 at 1/250 dilution (1.76 ug/ml) followed by a ready to use Rabbit specific IHC polymer detection kit HRP/DAB (**ab209101**). Nuclear staining on mouse kidney is observed. The section was incubated with ab239361 for 30 mins at room temperature. The immunostaining was performed on a Leica Biosystems BOND® RX instrument. Counterstained with hematoxylin. Heat mediated antigen retrieval with Tris-EDTA buffer (pH 9.0, epitope retrieval solution 2) for 20mins.

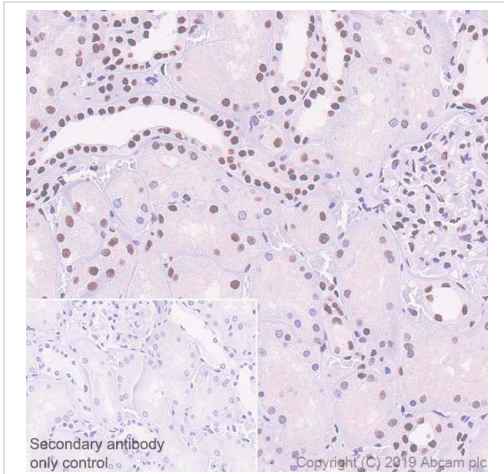
Secondary antibody only control: Secondary antibody is a ready to use Rabbit specific IHC polymer detection kit HRP/DAB (**ab209101**).



Immunohistochemistry (Formalin/PFA-fixed paraffin-embedded sections) - Anti-ATF2 antibody [EPR22938-114] (ab239361)

Immunohistochemical analysis of paraffin-embedded human kidney carcinoma tissue labeling ATF2 with ab239361 at 1/250 dilution (1.76 ug/ml) followed by a ready to use Rabbit specific IHC polymer detection kit HRP/DAB (**ab209101**). Nuclear staining on human kidney carcinoma (PMID: 27377902) is observed. The section was incubated with ab239361 for 30 mins at room temperature. The immunostaining was performed on a Leica Biosystems BOND® RX instrument. Counterstained with hematoxylin. Heat mediated antigen retrieval with Tris-EDTA buffer (pH 9.0, epitope retrieval solution 2) for 20mins.

Secondary antibody only control: Secondary antibody is a ready to use Rabbit specific IHC polymer detection kit HRP/DAB (**ab209101**).



Immunohistochemistry (Formalin/PFA-fixed paraffin-embedded sections) - Anti-ATF2 antibody [EPR22938-114] (ab239361)

Immunohistochemical analysis of paraffin-embedded human kidney tissue labeling ATF2 with ab239361 at 1/250 dilution (1.76 ug/ml) followed by a ready to use Rabbit specific IHC polymer detection kit HRP/DAB ([ab209101](#)). Nuclear staining on human kidney (PMID: 27377902) is observed. The section was incubated with ab239361 for 30 mins at room temperature. The immunostaining was performed on a Leica Biosystems BOND® RX instrument. Counterstained with hematoxylin. Heat mediated antigen retrieval with Tris-EDTA buffer (pH 9.0, epitope retrieval solution 2) for 20mins.

Secondary antibody only control: Used PBS instead of primary antibody, secondary antibody is a ready to use Rabbit specific IHC polymer detection kit HRP/DAB ([ab209101](#)).

Why choose a recombinant antibody?

 <p>Research with confidence Consistent and reproducible results</p>	 <p>Long-term and scalable supply Recombinant technology</p>
 <p>Success from the first experiment Confirmed specificity</p>	 <p>Ethical standards compliant Animal-free production</p>

Anti-ATF2 antibody [EPR22938-114] (ab239361)

Please note: All products are "FOR RESEARCH USE ONLY. NOT FOR USE IN DIAGNOSTIC PROCEDURES"

Our Abpromise to you: Quality guaranteed and expert technical support

- Replacement or refund for products not performing as stated on the datasheet

- Valid for 12 months from date of delivery
- Response to your inquiry within 24 hours

- We provide support in Chinese, English, French, German, Japanese and Spanish
- Extensive multi-media technical resources to help you
- We investigate all quality concerns to ensure our products perform to the highest standards

If the product does not perform as described on this datasheet, we will offer a refund or replacement. For full details of the Abpromise, please visit <https://www.abcam.co.jp/abpromise> or contact our technical team.

Terms and conditions

- Guarantee only valid for products bought direct from Abcam or one of our authorized distributors