

Anti-ATF-4 antibody ab31390

★★★★★ [4 Abreviews](#) [11 References](#) [画像数 1](#)

製品の概要

製品名	Anti-ATF-4 antibody
製品の詳細	Rabbit polyclonal to ATF-4
由来種	Rabbit
特異性	Antibody detects endogenous levels of ATF-4 protein around Serine 245.
アプリケーション	適用あり: ELISA, IHC-Fr, ICC/IF, IHC-P
種交差性	交差種: Mouse, Human
免疫原	Synthetic peptide corresponding to Human ATF-4. Database link: P18848
特記事項	<p>The Life Science industry has been in the grips of a reproducibility crisis for a number of years. Abcam is leading the way in addressing this with our range of recombinant monoclonal antibodies and knockout edited cell lines for gold-standard validation. Please check that this product meets your needs before purchasing.</p> <p>If you have any questions, special requirements or concerns, please send us an inquiry and/or contact our Support team ahead of purchase. Recommended alternatives for this product can be found below, along with publications, customer reviews and Q&As</p>

製品の特性

製品の状態	Liquid
保存方法	Shipped at 4°C. Upon delivery aliquot and store at -20°C. Avoid freeze / thaw cycles.
バッファー	pH: 7.40 Preservative: 0.02% Sodium azide Constituents: PBS, 50% Glycerol, 0.87% Sodium chloride
精製度	Without Mg ²⁺ and Ca ²⁺ Immunogen affinity purified
ポリ/モノ	ポリクローナル
アイソタイプ	IgG

アプリケーション

The Abpromise guarantee

Abpromise保証は、次のテスト済みアプリケーションにおけるab31390の使用に適用されず

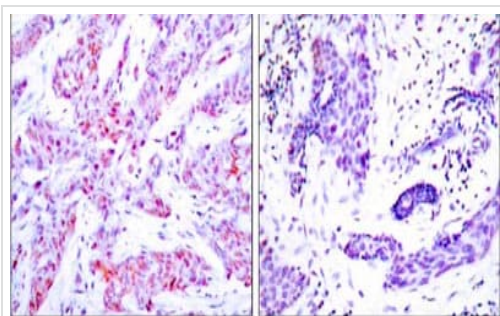
アプリケーションノートには、推奨の開始希釈率がありますが、適切な希釈率につきましてはご検討ください。

アプリケーション	Abreviews	特記事項
ELISA		Use at an assay dependent concentration.
IHC-Fr	★★★★★ (1)	Use at an assay dependent concentration.
ICC/IF	★★★★★ (1)	Use at an assay dependent concentration. PubMed: 21933012 Fixed with methanol.
IHC-P	★★★★★ (2)	Use at an assay dependent concentration.

ターゲット情報

機能	Transcriptional activator. Binds the cAMP response element (CRE) (consensus: 5'-GTGACGT[AC][AG]-3'), a sequence present in many viral and cellular promoters. It binds to a Tax-responsive enhancer element in the long terminal repeat of HTLV-I.
配列類似性	Belongs to the bZIP family. Contains 1 bZIP domain.
細胞内局在	Cytoplasm. Cell membrane. Nucleus. Colocalizes with GABBR1 in hippocampal neuron dendritic membranes.

画像



Immunohistochemistry (Formalin/PFA-fixed paraffin-embedded sections) - Anti-ATF-4 antibody (ab31390)

ab31390 at a 1:50-1:100 dilution staining ATF-4 in human breast carcinoma tissue, using Immunohistochemistry, Paraffin Embedded Tissue.

Left image : Un-treated.

Right image : Antibody pre-incubated with synthesized peptide.

Please note: All products are "FOR RESEARCH USE ONLY. NOT FOR USE IN DIAGNOSTIC PROCEDURES"

Our Abpromise to you: Quality guaranteed and expert technical support

- Replacement or refund for products not performing as stated on the datasheet
- Valid for 12 months from date of delivery

- Response to your inquiry within 24 hours
- We provide support in Chinese, English, French, German, Japanese and Spanish
- Extensive multi-media technical resources to help you
- We investigate all quality concerns to ensure our products perform to the highest standards

If the product does not perform as described on this datasheet, we will offer a refund or replacement. For full details of the Abpromise, please visit <https://www.abcam.co.jp/abpromise> or contact our technical team.

Terms and conditions

- Guarantee only valid for products bought direct from Abcam or one of our authorized distributors