


### Anti-Argininosuccinate Lyase antibody ab96215

面格新 /

医薬用外劇物

#### 製品の概要

製品名	Anti-Argininosuccinate Lyase antibody
製品の詳細	Rabbit polyclonal to Argininosuccinate Lyase
由来種	Rabbit
アプリケーション	<b>適用あり:</b> WB, ICC/IF, IHC-P
種交差性	<b>交差種:</b> Human <b>交差が予測される動物種:</b> Mouse, Cow 
免疫原	Recombinant fragment corresponding to Human Argininosuccinate Lyase aa 86-335. Database link: <a href="#">P04424</a>
ポジティブ・コントロール	WB: MOLT-4, HeLa, IHC-P: DLD1 xenograft. ICC/IF: HeLa.
特記事項	<p>The Life Science industry has been in the grips of a reproducibility crisis for a number of years. Abcam is leading the way in addressing this with our range of recombinant monoclonal antibodies and knockout edited cell lines for gold-standard validation. Please check that this product meets your needs before purchasing.</p> <p>If you have any questions, special requirements or concerns, please send us an inquiry and/or contact our Support team ahead of purchase. Recommended alternatives for this product can be found below, along with publications, customer reviews and Q&amp;As</p>

#### 製品の特性

製品の状態	Liquid
保存方法	Shipped at 4°C. Upon delivery aliquot and store at -20°C or -80°C. Avoid repeated freeze / thaw cycles.
バッファー	pH: 7.00 Preservative: 0.01% Thimerosal (merthiolate) Constituents: 1.21% Tris, 0.75% Glycine, 10% Glycerol (glycerin, glycerine)
精製度	Immunogen affinity purified
ポリ/モノ	ポリクローナル
アイソタイプ	IgG

## アプリケーション

**The Abpromise guarantee** Abpromise保証は、次のテスト済みアプリケーションにおけるab96215の使用に適用されます  
アプリケーションノートには、推奨の開始希釈率がありますが、適切な希釈率につきましてはご確認ください。

アプリケーション	Abreviews	特記事項
WB		1/500 - 1/3000. Predicted molecular weight: 52 kDa.
ICC/IF		1/100 - 1/1000.
IHC-P		1/100 - 1/1000.

## ターゲット情報

### パスウェイ

Amino-acid biosynthesis; L-arginine biosynthesis; L-arginine from L-ornithine and carbamoyl phosphate: step 3/3.  
Nitrogen metabolism; urea cycle; L-arginine and fumarate from (N(omega)-L-arginino)succinate: step 1/1.

### 関連疾患

Defects in ASL are the cause of arginosuccinicaciduria (ARGINSA) [MIM:207900].  
Arginosuccinicaciduria is an autosomal recessive disorder of the urea cycle. The disease is characterized by mental and physical retardation, liver enlargement, skin lesions, dry and brittle hair showing trichorrhexis nodosa microscopically and fluorescing red, convulsions, and episodic unconsciousness.

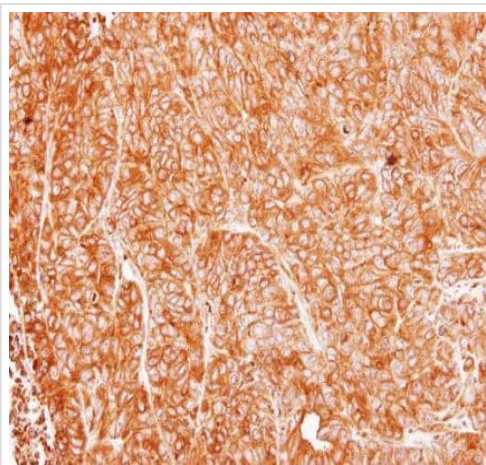
### 配列類似性

Belongs to the lyase 1 family. Argininosuccinate lyase subfamily.

### 翻訳後修飾

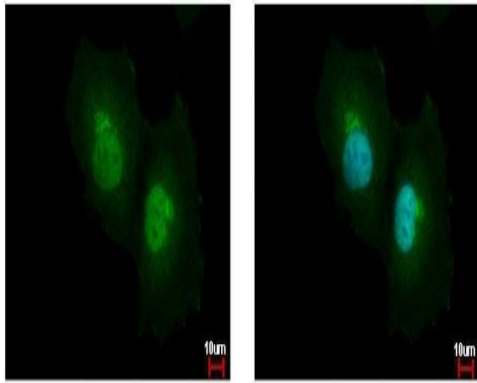
Acetylation modifies enzyme activity in response to alterations of extracellular nutrient availability. Acetylation increased with trichostin A (TSA) or with nicotinamide (NAM). Glucose increases acetylation by about a factor of 3 with decreasing enzyme activity. Acetylation on Lys-288 is decreased on the addition of extra amino acids resulting in activation of enzyme activity.

## 画像



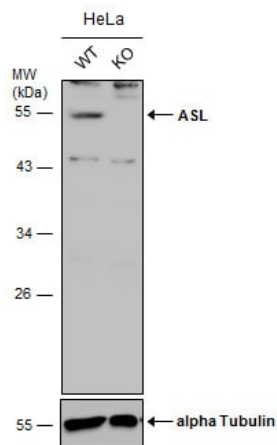
Paraffin embedded DLD1 xenograft stained for ASL using ab96215 at 1/500 dilution in immunohistochemical analysis.

Immunohistochemistry (Formalin/PFA-fixed paraffin-embedded sections) - Anti-Argininosuccinate Lyase antibody (ab96215)



Immunocytochemistry/ Immunofluorescence - Anti-Argininosuccinate Lyase antibody (ab96215)

HeLa cells stained for ASL (green) using ab96215 at 1/500 dilution in ICC/IF.



Western blot - Anti-Argininosuccinate Lyase antibody (ab96215)

**All lanes :** Anti-Argininosuccinate Lyase antibody (ab96215) at 1/1000 dilution

**Lane 1 :** Wild-type HeLa cell extract

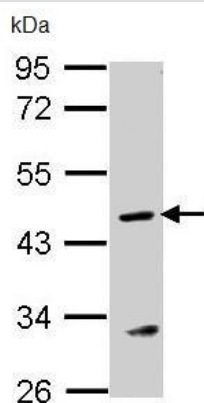
**Lane 2 :** Argininosuccinate Lyase Knockout HeLa cell extracts

Lysates/proteins at 30  $\mu$ g per lane.

#### Secondary

**All lanes :** HRP-conjugated anti-rabbit IgG

**Predicted band size:** 52 kDa



Western blot - Anti-Argininosuccinate Lyase antibody (ab96215)

Anti-Argininosuccinate Lyase antibody (ab96215) at 1/1000 dilution + MOLT-4 whole cell lysate at 30  $\mu$ g

**Predicted band size:** 52 kDa

10% SDS PAGE

### **Our Abpromise to you: Quality guaranteed and expert technical support**

---

- Replacement or refund for products not performing as stated on the datasheet
- Valid for 12 months from date of delivery
- Response to your inquiry within 24 hours
  
- We provide support in Chinese, English, French, German, Japanese and Spanish
- Extensive multi-media technical resources to help you
- We investigate all quality concerns to ensure our products perform to the highest standards

If the product does not perform as described on this datasheet, we will offer a refund or replacement. For full details of the Abpromise, please visit <https://www.abcam.co.jp/abpromise> or contact our technical team.

### **Terms and conditions**

---

- Guarantee only valid for products bought direct from Abcam or one of our authorized distributors