

Anti-Apoptosis enhancing nuclease antibody ab97915

面格新?

医薬用外劇物

製品の概要

| | |
|--------------|---|
| 製品名 | Anti-Apoptosis enhancing nuclease antibody |
| 製品の詳細 | Rabbit polyclonal to Apoptosis enhancing nuclease |
| 由来種 | Rabbit |
| アプリケーション | 適用あり: WB, IHC-P |
| 種交差性 | 交差種: Human |
| 免疫原 | Synthetic peptide, corresponding to a region within amino acids 236-297 of Apoptosis enhancing nuclease (NP_073604). |
| ポジティブ・コントロール | HeLa, HepG2 or MOLT4 cell lines. |
| 特記事項 | <p>The Life Science industry has been in the grips of a reproducibility crisis for a number of years. Abcam is leading the way in addressing this with our range of recombinant monoclonal antibodies and knockout edited cell lines for gold-standard validation. Please check that this product meets your needs before purchasing.</p> <p>If you have any questions, special requirements or concerns, please send us an inquiry and/or contact our Support team ahead of purchase. Recommended alternatives for this product can be found below, along with publications, customer reviews and Q&As</p> |

製品の特性

| | |
|--------|--|
| 製品の状態 | Liquid |
| 保存方法 | Shipped at 4°C. Upon delivery aliquot and store at -20°C or -80°C. Avoid repeated freeze / thaw cycles. |
| バッファー | <p>pH: 7.00</p> <p>Preservative: 0.01% Thimerosal (merthiolate)</p> <p>Constituents: 1.21% Tris, 0.75% Glycine, 10% Glycerol (glycerin, glycerine)</p> |
| 精製度 | Immunogen affinity purified |
| ポリ/モノ | ポリクローナル |
| アイソタイプ | IgG |

アプリケーション

The Abpromise guarantee

Abpromise保証は、次のテスト済みアプリケーションにおけるab97915の使用に適用されます

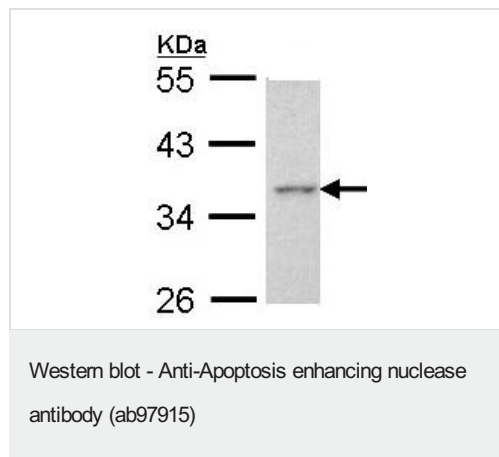
アプリケーションノートには、推奨の開始希釈率がありますが、適切な希釈率につきましてはご確認ください。

| アプリケーション | Abreviews | 特記事項 |
|----------|-----------|---|
| WB | | 1/500 - 1/3000. Predicted molecular weight: 36 kDa. |
| IHC-P | | 1/100 - 1/250. |

ターゲット情報

| | |
|-------|---|
| 機能 | Exonuclease with activity against single- and double-stranded DNA and RNA. Mediates p53-induced apoptosis. When induced by p53 following DNA damage, digests double-stranded DNA to form single-stranded DNA and amplifies DNA damage signals, leading to enhancement of apoptosis. |
| 配列類似性 | Contains 1 exonuclease domain. |
| 細胞内局在 | Nucleus. Nucleus > nucleolus. Localized predominantly in the nucleolus. Translocates from the nucleolus to the nucleoplasm upon apoptosis induction. |

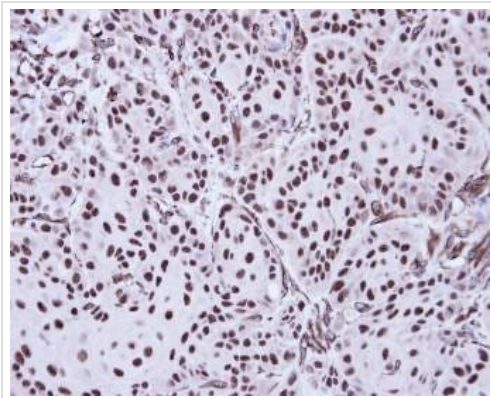
画像



Anti-Apoptosis enhancing nuclease antibody (ab97915) at 1/1000 dilution + HeLa whole cell lysate at 30 µg

Predicted band size: 36 kDa

10% SDS PAGE



Immunohistochemistry (Formalin/PFA-fixed paraffin-embedded sections) - Anti-Apoptosis enhancing nuclease antibody (ab97915)

ab97915, at 1/100 dilution, staining Apoptosis enhancing nuclease in Cal27 xenograft tissue by Immunohistochemistry. Formalin-fixed, paraffin-embedded section.

Please note: All products are "FOR RESEARCH USE ONLY. NOT FOR USE IN DIAGNOSTIC PROCEDURES"

Our Abpromise to you: Quality guaranteed and expert technical support

- Replacement or refund for products not performing as stated on the datasheet
- Valid for 12 months from date of delivery
- Response to your inquiry within 24 hours
- We provide support in Chinese, English, French, German, Japanese and Spanish
- Extensive multi-media technical resources to help you
- We investigate all quality concerns to ensure our products perform to the highest standards

If the product does not perform as described on this datasheet, we will offer a refund or replacement. For full details of the Abpromise, please visit <https://www.abcam.co.jp/abpromise> or contact our technical team.

Terms and conditions

- Guarantee only valid for products bought direct from Abcam or one of our authorized distributors