

# Anti-Apolipoprotein B antibody ab7616

★★★★★ [2 Abreviews](#) [18 References](#) [画像数 1](#)

### 製品の概要

製品名	Anti-Apolipoprotein B antibody
製品の詳細	Goat polyclonal to Apolipoprotein B
由来種	Goat
特異性	Typically less than 1% cross reactivity against other types of apoLipoprotein was detected by ELISA. This antibody reacts with human apoLipoprotein B and has negligible cross-reactivity with Type A-I, A-II, C-I, C-II, C-III, E and J apoLipoproteins.
アプリケーション	<b>適用あり:</b> WB
種交差性	<b>交差種:</b> Human
免疫原	Full length native apoLipoprotein Type B (purified).
特記事項	<p>This antibody has been used to determine that atherosclerotic lesions in the human aorta contain considerable amounts of lipoproteins. These lipoproteins were observed to be complexed with components of the extracellular matrix (especially LDL and proteoglycans). The role of these matrix-lipoprotein complexes is not entirely clear, however, animal models of atherosclerosis have shown that increased cellular proliferation and increased production of extracellular matrix components occur following injury to the intimal layer of the aorta.</p> <p>At least 9 distinct polymorphic forms of apolipoproteins are known. The apolipoproteins act as stabilizers of the intact lipoprotein particles. Quantitative measurements of HDL, LDL and VLDL particles in human serum are often used to estimate an individuals' relative risk of coronary heart disease. In addition, quantitative immunological measurements of certain apolipoproteins (especially A-1 and B) have been suggested to be more accurate estimators of coronary heart disease than measurements of lipoprotein particles (especially HDL and LDL). Abcam's apo-lipoproteins are derived from human plasma by density gradient ultracentrifugation and HPLC.</p> <p>The Life Science industry has been in the grips of a reproducibility crisis for a number of years. Abcam is leading the way in addressing this with our range of recombinant monoclonal antibodies and knockout edited cell lines for gold-standard validation. Please check that this product meets your needs before purchasing.</p> <p>If you have any questions, special requirements or concerns, please send us an inquiry and/or contact our Support team ahead of purchase. Recommended alternatives for this product can be found below, along with publications, customer reviews and Q&amp;As</p>

### 製品の特性

製品の状態	Liquid
保存方法	Shipped at 4°C. Store at +4°C short term (1-2 weeks). Upon delivery aliquot. Store at -20°C or -80°C. Avoid freeze / thaw cycle.
バッファー	Preservative: 0.01% Sodium azide Constituents: 4.7625% Sodium borate, 0.146% EDTA, 0.435% Sodium chloride
精製度	Immunogen affinity purified
特記事項 (精製)	This product has been prepared by immunoaffinity chromatography using immobilized antigens followed by extensive cross-adsorption against other apoLipoproteins and human serum proteins to remove any unwanted specificities.
一次抗体 備考	At least 9 distinct polymorphic forms of apolipoproteins are known. The apolipoproteins act as stabilizers of the intact lipoprotein particles. Quantitative measurements of HDL, LDL and VLDL particles in human serum are often used to estimate an individuals' relative risk of coronary heart disease. In addition, quantitative immunological measurements of certain apolipoproteins (especially A-1 and B) have been suggested to be more accurate estimators of coronary heart disease than measurements of lipoprotein particles (especially HDL and LDL). Abcam's apo-lipoproteins are derived from human plasma by density gradient ultracentrifugation and HPLC.
ポリ/モノ	ポリクローナル
アイソタイプ	IgG

## アプリケーション

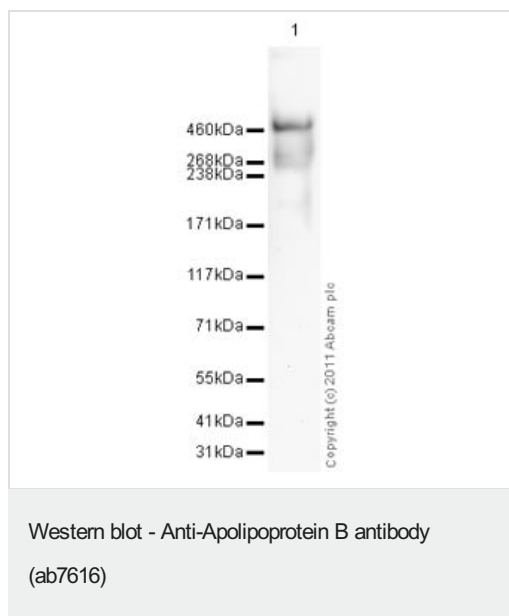
**The Abpromise guarantee**      **Abpromise保証は、次のテスト済みアプリケーションにおけるab7616の使用に適用されます**  
 アプリケーションノートには、推奨の開始希釈率がありますが、適切な希釈率につきましてはご検討ください。

アプリケーション	Abreviews	特記事項
WB		1/200 - 1/1000.

## ターゲット情報

機能	Apolipoprotein B is a major protein constituent of chylomicrons (apo B-48), LDL (apo B-100) and VLDL (apo B-100). Apo B-100 functions as a recognition signal for the cellular binding and internalization of LDL particles by the apoB/E receptor.
関連疾患	Hypobetalipoproteinemia, familial, 1 Familial ligand-defective apolipoprotein B-100 Defects in APOB associated with defects in other genes (polygenic) can contribute to hypocholesterolemia.
配列類似性	Contains 1 vitellogenin domain.
翻訳後修飾	Palmitoylated; structural requirement for proper assembly of the hydrophobic core of the lipoprotein particle.
細胞内局在	Cytoplasm. Secreted.

## 画像



Anti-Apolipoprotein B antibody (ab7616) at 1 µg/ml + Native Human Apolipoprotein B (**ab77859**) at 0.01 µg

### Secondary

Rabbit polyclonal to Goat IgG - H&L - Pre-Adsorbed (HRP) (**ab65486**) at 1/3000 dilution

Developed using the ECL technique.

**Exposure time:** 3 minutes

**Please note:** All products are "FOR RESEARCH USE ONLY. NOT FOR USE IN DIAGNOSTIC PROCEDURES"

### Our Abpromise to you: Quality guaranteed and expert technical support

- Replacement or refund for products not performing as stated on the datasheet
- Valid for 12 months from date of delivery
- Response to your inquiry within 24 hours
- We provide support in Chinese, English, French, German, Japanese and Spanish
- Extensive multi-media technical resources to help you
- We investigate all quality concerns to ensure our products perform to the highest standards

If the product does not perform as described on this datasheet, we will offer a refund or replacement. For full details of the Abpromise, please visit <https://www.abcam.co.jp/abpromise> or contact our technical team.

### Terms and conditions

- Guarantee only valid for products bought direct from Abcam or one of our authorized distributors