

Anti-Apolipoprotein B antibody [7B8] ab39560

2 References [画像数 3](#)

製品の概要

製品名	Anti-Apolipoprotein B antibody [7B8]
製品の詳細	Mouse monoclonal [7B8] to Apolipoprotein B
由来種	Mouse
特異性	Ab39560 has specificity for Apolipoprotein B from serum/plasma. No crossreactivity is seen with Apolipoprotein A1.
アプリケーション	適用あり: IHC-P
種交差性	交差種: Human
免疫原	Human LDL.

製品の特性

製品の状態	Liquid
保存方法	Shipped at 4°C. Store at +4°C short term (1-2 weeks). Store at -20°C or -80°C. Avoid freeze / thaw cycle.
バッファー	pH: 7.40 Preservative: 0.097% Sodium azide Constituents: 0.0268% PBS, 2.9% Sodium chloride
精製度	Protein A purified
ポリ/モノ	モノクローナル
クローン名	7B8
ミエローマ	x63-Ag8.653
アイソタイプ	IgG2b
軽鎖の種類	kappa

アプリケーション

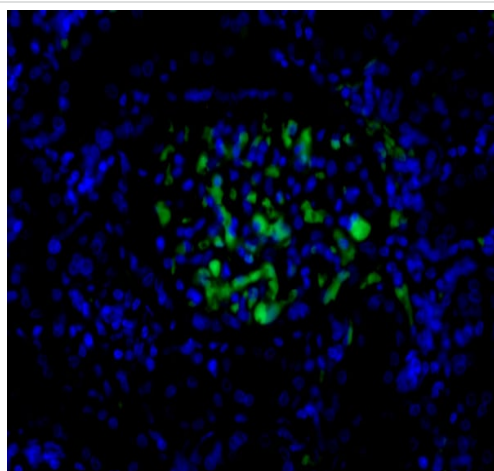
The Abpromise guarantee **Abpromise保証は、**次のテスト済みアプリケーションにおけるab39560の使用に適用されます
アプリケーションノートには、推奨の開始希釈率がありますが、適切な希釈率につきましてはご検討ください。

アプリケーション	Abreviews	特記事項
IHC-P		1/100 - 1/400.

ターゲット情報

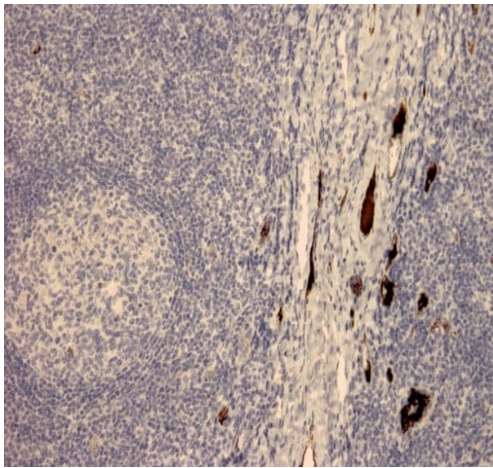
機能	Apolipoprotein B is a major protein constituent of chylomicrons (apo B-48), LDL (apo B-100) and VLDL (apo B-100). Apo B-100 functions as a recognition signal for the cellular binding and internalization of LDL particles by the apoB/E receptor.
関連疾患	Hypobetalipoproteinemia, familial, 1 Familial ligand-defective apolipoprotein B-100 Defects in APOB associated with defects in other genes (polygenic) can contribute to hypocholesterolemia.
配列類似性	Contains 1 vitellogenin domain.
翻訳後修飾	Palmitoylated; structural requirement for proper assembly of the hydrophobic core of the lipoprotein particle.
細胞内局在	Cytoplasm. Secreted.

画像



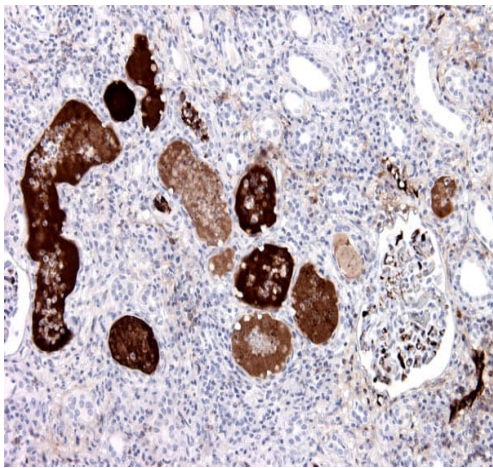
Immunohistochemistry (Formalin/PFA-fixed paraffin-embedded sections) analysis of human kidney tissue labelling Apolipoprotein B with ab39560 at a dilution of 1/100. Signal is strong in the veins of the glomerulus.

Immunohistochemistry (Formalin/PFA-fixed paraffin-embedded sections) - Anti-Apolipoprotein B antibody [7B8] (ab39560)



Immunohistochemistry (Formalin/PFA-fixed paraffin-embedded sections) analysis of human tonsil tissue labelling Apolipoprotein B with ab39560 at a dilution of 1/400. Plasma of the veins was stained strongly.

Immunohistochemistry (Formalin/PFA-fixed paraffin-embedded sections) - Anti-Apolipoprotein B antibody [7B8] (ab39560)



Immunohistochemistry (Formalin/PFA-fixed paraffin-embedded sections) analysis of human kidney tissue labelling Apolipoprotein B with ab39560 at a dilution of 1/400. Plasma veins were stained strongly.

Immunohistochemistry (Formalin/PFA-fixed paraffin-embedded sections) - Anti-Apolipoprotein B antibody [7B8] (ab39560)

Please note: All products are "FOR RESEARCH USE ONLY. NOT FOR USE IN DIAGNOSTIC PROCEDURES"

Our Abpromise to you: Quality guaranteed and expert technical support

- Replacement or refund for products not performing as stated on the datasheet

- Valid for 12 months from date of delivery
- Response to your inquiry within 24 hours
- We provide support in Chinese, English, French, German, Japanese and Spanish
- Extensive multi-media technical resources to help you
- We investigate all quality concerns to ensure our products perform to the highest standards

If the product does not perform as described on this datasheet, we will offer a refund or replacement. For full details of the Abpromise, please visit <https://www.abcam.co.jp/abpromise> or contact our technical team.

Terms and conditions

- Guarantee only valid for products bought direct from Abcam or one of our authorized distributors