


Anti-APOBEC4 antibody ab103737

画像数 1

製品の概要

製品名	Anti-APOBEC4 antibody
製品の詳細	Rabbit polyclonal to APOBEC4
由来種	Rabbit
アプリケーション	適用あり: WB
種交差性	<p>交差種: Mouse, Rat, Human</p> <p>交差が予測される動物種: Horse, Dog, Pig </p>
免疫原	<p>Synthetic peptide corresponding to Human APOBEC4 aa 100-200 conjugated to keyhole limpet haemocyanin.</p> <p>(Peptide available as ab119179)</p>
ポジティブ・コントロール	This antibody gave a positive signal in the following tissue lysates: Human Testis; Mouse Testis; Rat Testis; Human Fetal Brain; Human Fetal Lung.
特記事項	<p>The Life Science industry has been in the grips of a reproducibility crisis for a number of years. Abcam is leading the way in addressing this with our range of recombinant monoclonal antibodies and knockout edited cell lines for gold-standard validation. Please check that this product meets your needs before purchasing.</p> <p>If you have any questions, special requirements or concerns, please send us an inquiry and/or contact our Support team ahead of purchase. Recommended alternatives for this product can be found below, along with publications, customer reviews and Q&As</p>

製品の特性

製品の状態	Liquid
保存方法	Shipped at 4°C. Store at +4°C short term (1-2 weeks). Upon delivery aliquot. Store at -20°C or -80°C. Avoid freeze / thaw cycle.
バッファー	<p>pH: 7.40</p> <p>Preservative: 0.02% Sodium azide</p> <p>Constituent: PBS</p> <p>Batches of this product that have a concentration < 1mg/ml may have BSA added as a stabilising agent. If you would like information about the formulation of a specific lot, please contact our scientific support team who will be happy to help.</p>

精製度	Immunogen affinity purified
ポリモノ	ポリクローナル
アイソタイプ	IgG

アプリケーション

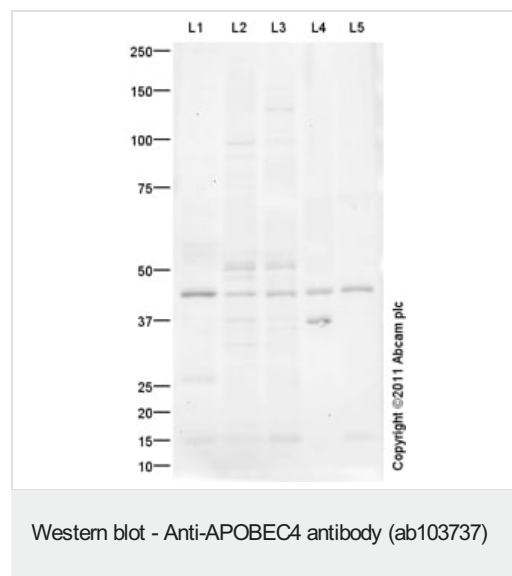
The Abpromise guarantee **Abpromise保証は、**次のテスト済みアプリケーションにおけるab103737の使用に適用されます
アプリケーションノートには、推奨の開始希釈率がありますが、適切な希釈率につきましてはご検討ください。

アプリケーション	Abreviews	特記事項
WB		Use a concentration of 1 µg/ml. Detects a band of approximately 45 kDa (predicted molecular weight: 42 kDa).

ターゲット情報

機能	Putative C to U editing enzyme whose physiological substrate is not yet known.
組織特異性	Predominantly expressed in testis.
配列類似性	Belongs to the cytidine and deoxycytidylate deaminase family.

画像



All lanes : Anti-APOBEC4 antibody (ab103737) at 1 µg/ml

Lane 1 : Human testis tissue lysate - total protein ([ab30257](#))

Lane 2 : Testis (Mouse) Tissue Lysate

Lane 3 : Testis (Rat) Tissue Lysate

Lane 4 : Brain (Human) Tissue Lysate - fetal normal tissue
([ab29467](#))

Lane 5 : Lung (Human) Whole Cell Lysate - fetal normal tissue
([ab30282](#))

Lysates/proteins at 10 µg per lane.

Secondary

All lanes : Goat Anti-Rabbit IgG H&L (HRP) preadsorbed
([ab97080](#)) at 1/5000 dilution

Developed using the ECL technique.

Performed under reducing conditions.

Predicted band size: 42 kDa

Observed band size: 45 kDa

Additional bands at: 37 kDa, 50 kDa. We are unsure as to the identity of these extra bands.

Exposure time: 20 minutes

Please note: All products are "FOR RESEARCH USE ONLY. NOT FOR USE IN DIAGNOSTIC PROCEDURES"

Our Abpromise to you: Quality guaranteed and expert technical support

- Replacement or refund for products not performing as stated on the datasheet
- Valid for 12 months from date of delivery
- Response to your inquiry within 24 hours
- We provide support in Chinese, English, French, German, Japanese and Spanish
- Extensive multi-media technical resources to help you
- We investigate all quality concerns to ensure our products perform to the highest standards

If the product does not perform as described on this datasheet, we will offer a refund or replacement. For full details of the Abpromise, please visit <https://www.abcam.co.jp/abpromise> or contact our technical team.

Terms and conditions

- Guarantee only valid for products bought direct from Abcam or one of our authorized distributors