

Anti-APLP1 antibody ab94957

画像数 2

製品の概要

| | |
|--------------|---|
| 製品名 | Anti-APLP1 antibody |
| 製品の詳細 | Rabbit polyclonal to APLP1 |
| 由来種 | Rabbit |
| アプリケーション | 適用あり: WB, ICC/IF |
| 種交差性 | 交差種: Human |
| 免疫原 | Synthetic peptide corresponding to Human APLP1 aa 200-300 conjugated to keyhole limpet haemocyanin. (Peptide available as ab106419) |
| ポジティブ・コントロール | This antibody gave a positive signal in Human Brain Tissue Lysate. This antibody gave a positive result when used in the following methanol fixed cell lines: SKNSH. |
| 特記事項 | <p>The Life Science industry has been in the grips of a reproducibility crisis for a number of years. Abcam is leading the way in addressing this with our range of recombinant monoclonal antibodies and knockout edited cell lines for gold-standard validation. Please check that this product meets your needs before purchasing.</p> <p>If you have any questions, special requirements or concerns, please send us an inquiry and/or contact our Support team ahead of purchase. Recommended alternatives for this product can be found below, along with publications, customer reviews and Q&As</p> |

製品の特性

| | |
|-------|--|
| 製品の状態 | Liquid |
| 保存方法 | Shipped at 4°C. Store at +4°C short term (1-2 weeks). Upon delivery aliquot. Store at -20°C or -80°C. Avoid freeze / thaw cycle. |
| バッファー | <p>pH: 7.40</p> <p>Preservative: 0.02% Sodium azide</p> <p>Constituent: PBS</p> <p>Batches of this product that have a concentration < 1mg/ml may have BSA added as a stabilising agent. If you would like information about the formulation of a specific lot, please contact our scientific support team who will be happy to help.</p> |
| 精製度 | Immunogen affinity purified |

ポリモノ
アイソタイプ

ポリクローナル
IgG

アプリケーション

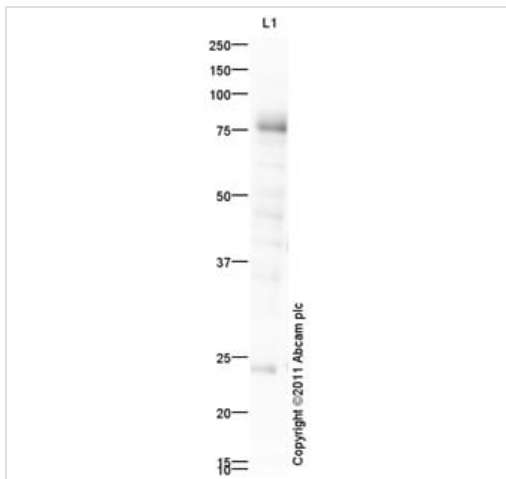
The Abpromise guarantee **Abpromise保証は、** 次のテスト済みアプリケーションにおけるab94957の使用に適用されます
アプリケーションノートには、推奨の開始希釈率がありますが、適切な希釈率につきましてはご検討ください。

| アプリケーション | Abreviews | 特記事項 |
|----------|-----------|--|
| WB | | Use a concentration of 1 µg/ml. Detects a band of approximately 75 kDa (predicted molecular weight: 72 kDa). |
| ICC/IF | | Use a concentration of 5 µg/ml. |

ターゲット情報

| | |
|-------|--|
| 機能 | May play a role in postsynaptic function. The C-terminal gamma-secretase processed fragment, ALID1, activates transcription activation through APBB1 (Fe65) binding (By similarity). Couples to JIP signal transduction through C-terminal binding. May interact with cellular G-protein signaling pathways. Can regulate neurite outgrowth through binding to components of the extracellular matrix such as heparin and collagen I. The gamma-CTF peptide, C30, is a potent enhancer of neuronal apoptosis. |
| 組織特異性 | Expressed in the cerebral cortex where it is localized to the postsynaptic density (PSD). |
| 配列類似性 | Belongs to the APP family. |
| ドメイン | The NPXY sequence motif found in many tyrosine-phosphorylated proteins is required for the specific binding of the PID domain. However, additional amino acids either N- or C-terminal to the NPXY motif are often required for complete interaction. The NPXY site is also involved in clathrin-mediated endocytosis. |
| 翻訳後修飾 | Proteolytically cleaved by caspases during neuronal apoptosis. Cleaved, in vitro, at Asp-620 by caspase-3. N- and O-glycosylated. O-glycosylation with core 1 or possibly core 8 glycans. Glycosylation on Ser-227 is the preferred site to Thr-228. |
| 細胞内局在 | Cell membrane and Cytoplasm. C-terminally processed in the Golgi complex. |

画像



Western blot - Anti-APLP1 antibody (ab94957)

Anti-APLP1 antibody (ab94957) at 1 µg/ml + Human brain tissue lysate - total protein ([ab29466](#)) at 10 µg

Secondary

Goat Anti-Rabbit IgG H&L (HRP) preadsorbed ([ab97080](#)) at 1/5000 dilution

Developed using the ECL technique.

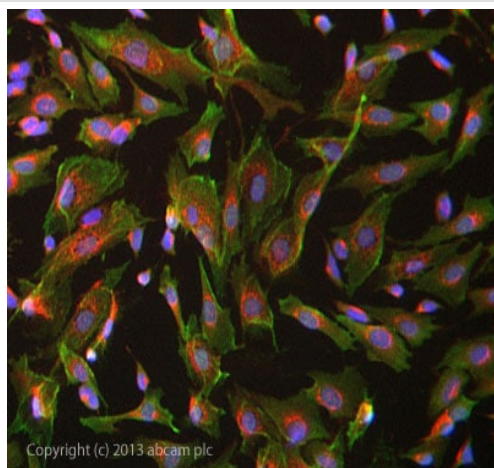
Performed under reducing conditions.

Predicted band size: 72 kDa

Observed band size: 75 kDa

Additional bands at: 24 kDa. We are unsure as to the identity of these extra bands.

Exposure time: 2 minutes



Immunocytochemistry/ Immunofluorescence - Anti-APLP1 antibody (ab94957)

ab94957 stained SKNSH cells. The cells were 100% methanol fixed (5 min) and then incubated in 1%BSA / 10% normal goat serum / 0.3M glycine in 0.1% PBS-Tween for 1h to permeabilise the cells and block non-specific protein-protein interactions. The cells were then incubated with the antibody ab94957 at 5µg/ml overnight at +4°C. The secondary antibody (green) was DyLight® 488 goat anti- rabbit ([ab96899](#)) IgG (H+L) used at a 1/1000 dilution for 1h. Alexa Fluor® 594 WGA was used to label plasma membranes (red) at a 1/200 dilution for 1h. DAPI was used to stain the cell nuclei (blue) at a concentration of 1.43µM.

Please note: All products are "FOR RESEARCH USE ONLY. NOT FOR USE IN DIAGNOSTIC PROCEDURES"

Our Abpromise to you: Quality guaranteed and expert technical support

- Replacement or refund for products not performing as stated on the datasheet
- Valid for 12 months from date of delivery
- Response to your inquiry within 24 hours

- We provide support in Chinese, English, French, German, Japanese and Spanish
- Extensive multi-media technical resources to help you
- We investigate all quality concerns to ensure our products perform to the highest standards

If the product does not perform as described on this datasheet, we will offer a refund or replacement. For full details of the Abpromise, please visit <https://www.abcam.co.jp/abpromise> or contact our technical team.

Terms and conditions

- Guarantee only valid for products bought direct from Abcam or one of our authorized distributors