

APC/Cy7® Mouse IgG1 kappa [MOPC-21] - Isotype Control ab239463

画像数 1

製品の概要

製品名	APC/Cy7® Mouse IgG1 kappa [MOPC-21] - Isotype Control
標識	APC/Cy7®. Ex: 650nm, Em: 774nm
特異性	ab239463 has unknown specificity and was chosen as an isotype control after screening on variety of resting, activated, live and fixed rat and human tissues.
アプリケーション	適用あり: Flow Cyt
特記事項	<p>This product or portions thereof is manufactured under license from Carnegie Mellon University under U.S. Patent Number 5, 268, 486 and related patents. Cy® and CyDye® are trademarks of Cytiva.</p> <p>The Life Science industry has been in the grips of a reproducibility crisis for a number of years. Abcam is leading the way in addressing this with our range of recombinant monoclonal antibodies and knockout edited cell lines for gold-standard validation. Please check that this product meets your needs before purchasing.</p> <p>If you have any questions, special requirements or concerns, please send us an inquiry and/or contact our Support team ahead of purchase. Recommended alternatives for this product can be found below, along with publications, customer reviews and Q&As</p>

製品の特性

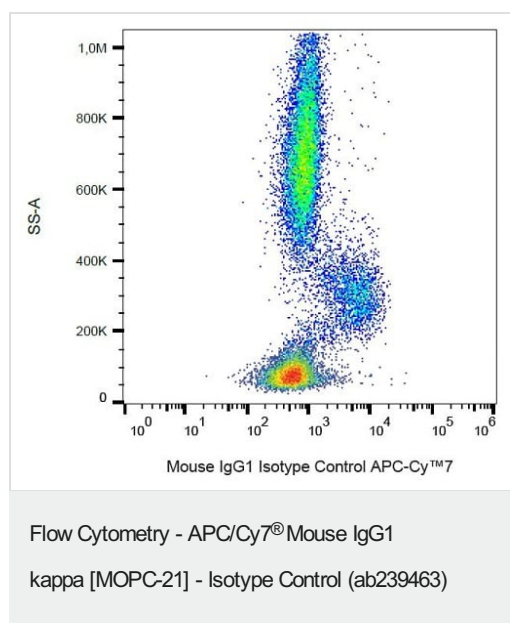
製品の状態	Liquid
保存方法	Shipped at 4°C. Store at +4°C. Store In the Dark.
バッファー	<p>pH: 7.4</p> <p>Preservative: 0.0975% Sodium azide</p> <p>Constituent: PBS</p>
精製度	Size exclusion
特記事項 (精製)	Purified antibody is conjugated with tandem dye Allophycocyanin/Cy7 ® under optimum conditions. The reagent is free of unconjugated Allophycocyanin/Cy7 ®.
ポリ/モノ	モノクローナル
クローン名	MOPC-21
アイソタイプ	IgG1

アプリケーション

The Abpromise guarantee Abpromise保証は、 次のテスト済みアプリケーションにおけるab239463の使用に適用されます
アプリケーションノートには、推奨の開始希釈率がありますが、適切な希釈率につきましてはご検討ください。

アプリケーション	Abreviews	特記事項
Flow Cyt		Use at an assay dependent concentration. ab239463 is intended as isotype control for flow cytometry analysis to establish the amount of non-specific antibody binding. For your particular experiment, use the same concentration of this isotype control antibody as the recommended working concentration of the antigen-specific antibody. Also, when working with prediluted antibodies, dilute the isotype control to the

画像



Example of non-specific ab239463 signal on human peripheral blood; surface staining, 3 µg/ml.

Please note: All products are "FOR RESEARCH USE ONLY. NOT FOR USE IN DIAGNOSTIC PROCEDURES"

Our Abpromise to you: Quality guaranteed and expert technical support

- Replacement or refund for products not performing as stated on the datasheet
- Valid for 12 months from date of delivery
- Response to your inquiry within 24 hours
- We provide support in Chinese, English, French, German, Japanese and Spanish
- Extensive multi-media technical resources to help you
- We investigate all quality concerns to ensure our products perform to the highest standards

If the product does not perform as described on this datasheet, we will offer a refund or replacement. For full details of the Abpromise, please visit <https://www.abcam.co.jp/abpromise> or contact our technical team.

Terms and conditions

- Guarantee only valid for products bought direct from Abcam or one of our authorized distributors