

Anti-Apc10 antibody ab106497

★★★★★ **1 Abreviews** [画像数 3](#)

製品の概要

製品名	Anti-Apc10 antibody
製品の詳細	Rabbit polyclonal to Apc10
由来種	Rabbit
特異性	ab106497 is predicted not to cross-react with other APC family members. Two isoforms of Apc10 are known to exist; ab106497 will recognize both isoforms.
アプリケーション	適用あり: ICC/IF, WB, IHC-P
種交差性	交差種: Mouse
免疫原	A 16 amino acid synthetic peptide near the center of Human Apc10 (EAX05052).
ポジティブ・コントロール	Mouse heart tissue and lysate
特記事項	<p>The Life Science industry has been in the grips of a reproducibility crisis for a number of years. Abcam is leading the way in addressing this with our range of recombinant monoclonal antibodies and knockout edited cell lines for gold-standard validation. Please check that this product meets your needs before purchasing.</p> <p>If you have any questions, special requirements or concerns, please send us an inquiry and/or contact our Support team ahead of purchase. Recommended alternatives for this product can be found below, along with publications, customer reviews and Q&As</p>

製品の特性

製品の状態	Liquid
保存方法	Shipped at 4°C. Store at 4°C (stable for up to 12 months).
バッファー	<p>pH: 7.2</p> <p>Preservative: 0.02% Sodium azide</p> <p>Constituent: PBS</p>
精製度	Immunogen affinity purified
ポリ/モノ	ポリクローナル
アイソタイプ	IgG

アプリケーション

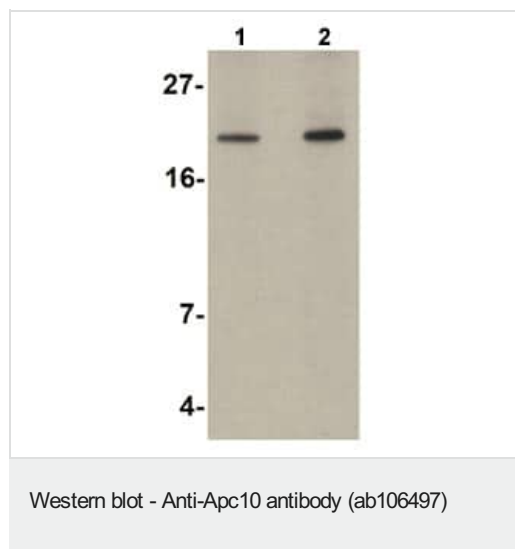
The Abpromise guarantee Abpromise保証は、 次のテスト済みアプリケーションにおけるab106497の使用に適用されます
 アプリケーションノートには、推奨の開始希釈率がありますが、適切な希釈率につきましてはご確認ください。

アプリケーション	Abreviews	特記事項
ICC/IF		Use a concentration of 20 µg/ml.
WB	★★★★★ (1)	Use a concentration of 1 - 2 µg/ml. Predicted molecular weight: 21 kDa.
IHC-P		Use at an assay dependent concentration.

ターゲット情報

機能	Component of the anaphase promoting complex/cyclosome (APC/C), a cell cycle-regulated E3 ubiquitin ligase that controls progression through mitosis and the G1 phase of the cell cycle. The APC/C complex acts by mediating ubiquitination and subsequent degradation of target proteins: it mainly mediates the formation of 'Lys-11'-linked polyubiquitin chains and, to a lower extent, the formation of 'Lys-48'- and 'Lys-63'-linked polyubiquitin chains.
パスウェイ	Protein modification; protein ubiquitination.
配列類似性	Belongs to the APC10 family. Contains 1 DOC domain.
製品の状態	It localises to Cytosol and nucleoplasm.

画像



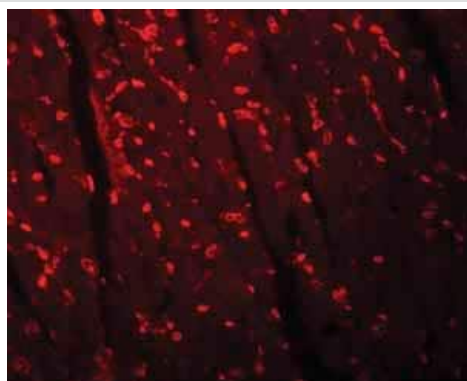
Lane 1 : Anti-Apc10 antibody (ab106497) at 1 µg/ml

Lane 2 : Anti-Apc10 antibody (ab106497) at 2 µg/ml

All lanes : Mouse heart tissue lysate

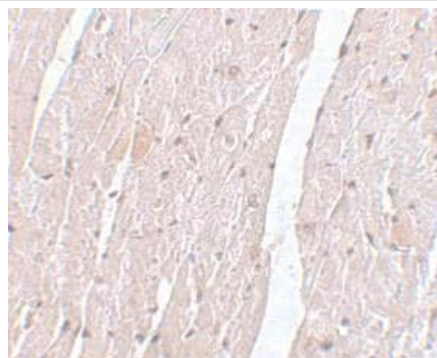
Lysates/proteins at 15 µg per lane.

Predicted band size: 21 kDa



Immunofluorescence of Apc10 in mouse heart tissue with ab106497 at 20 ug/mL.

Immunocytochemistry/ Immunofluorescence - Anti-Apc10 antibody (ab106497)



ab106497, at 5 µg/ml, staining Apc10 in Mouse heart tissue by Immunohistochemistry.

Immunohistochemistry (Formalin/PFA-fixed paraffin-embedded sections) - Anti-Apc10 antibody (ab106497)

Please note: All products are "FOR RESEARCH USE ONLY. NOT FOR USE IN DIAGNOSTIC PROCEDURES"

Our Abpromise to you: Quality guaranteed and expert technical support

- Replacement or refund for products not performing as stated on the datasheet
- Valid for 12 months from date of delivery
- Response to your inquiry within 24 hours
- We provide support in Chinese, English, French, German, Japanese and Spanish
- Extensive multi-media technical resources to help you
- We investigate all quality concerns to ensure our products perform to the highest standards

If the product does not perform as described on this datasheet, we will offer a refund or replacement. For full details of the Abpromise,

please visit <https://www.abcam.co.jp/abpromise> or contact our technical team.

Terms and conditions

- Guarantee only valid for products bought direct from Abcam or one of our authorized distributors