

APC Anti-IL-2 Receptor alpha antibody [PC61.5] ab210330

[2 References](#) [画像数 1](#)

製品の概要

製品名	APC Anti-IL-2 Receptor alpha antibody [PC61.5]
製品の詳細	APC Rat monoclonal [PC61.5] to IL-2 Receptor alpha
由来種	Rat
標識	APC. Ex: 645nm, Em: 660nm
アプリケーション	適用あり: Flow Cyt
種交差性	交差種: Mouse
免疫原	The details of the immunogen for this antibody are not available.
ポジティブ・コントロール	C57Bl/6 splenocytes.
特記事項	<p>This antibody is used as a marker for T cells, B cells and dendritic cell subsets. Expression of CD25, CD4 and the transcription factor Foxp3 is regarded as a phenotypic signature for Treg cells. As such, this antibody is widely used to distinguish Treg cells from naïve or conventional T cells which are CD25-.</p> <p>The Life Science industry has been in the grips of a reproducibility crisis for a number of years. Abcam is leading the way in addressing this with our range of recombinant monoclonal antibodies and knockout edited cell lines for gold-standard validation. Please check that this product meets your needs before purchasing.</p> <p>If you have any questions, special requirements or concerns, please send us an inquiry and/or contact our Support team ahead of purchase. Recommended alternatives for this product can be found below, along with publications, customer reviews and Q&As</p>

製品の特性

製品の状態	Liquid
保存方法	Shipped at 4°C. Upon delivery aliquot. Store at +4°C. Store In the Dark.
バッファー	pH: 7.20 Preservative: 0.09% Sodium azide Constituents: 0.12% Monobasic dihydrogen sodium phosphate, 0.87% Sodium chloride, 0.1% Gelatin
精製度	Affinity purified
特記事項 (精製)	Purified from tissue culture supernatant and conjugated under optimal conditions, with unreacted dye removed from the preparation.

ポリクローナル	モノクローナル
クローン名	PC61.5
アイソタイプ	IgG1

アプリケーション

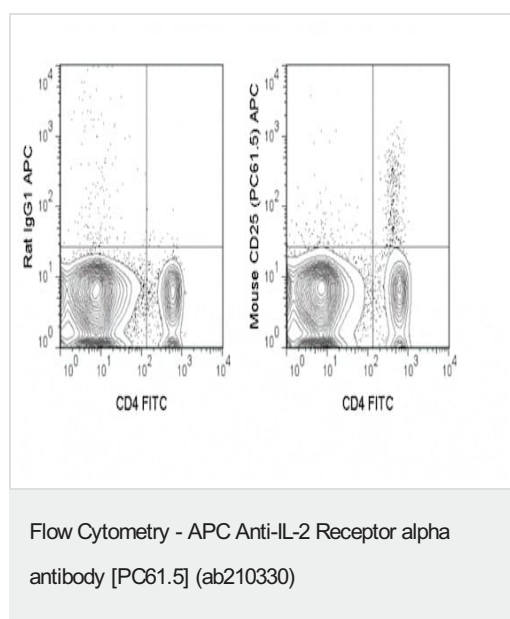
The Abpromise guarantee **Abpromise保証は、次のテスト済みアプリケーションにおけるab210330の使用に適用されず**
 アプリケーションノートには、推奨の開始希釈率がありますが、適切な希釈率につきましてはご検討ください。

アプリケーション	Abreviews	特記事項
Flow Cyt		Use at an assay dependent concentration. Use at 0.125 µg/test

ターゲット情報

機能	Receptor for interleukin-2.
関連疾患	Genetic variations in IL2RA are associated with susceptibility to diabetes mellitus insulin-dependent type 10 (IDDM10) [MIM:601942]. A multifactorial disorder of glucose homeostasis that is characterized by susceptibility to ketoacidosis in the absence of insulin therapy. Clinical features are polydipsia, polyphagia and polyuria which result from hyperglycemia-induced osmotic diuresis and secondary thirst. These derangements result in long-term complications that affect the eyes, kidneys, nerves, and blood vessels.
配列類似性	Contains 2 Sushi (CCP/SCR) domains.
細胞内局在	Membrane.

画像



Flow Cytometry analysis of C57Bl/6 splenocytes labeling IL-2 Receptor alpha with ab210330 at 0.125 µg (right panel) or 0.125 µg Allophycocyanin Rat IgG1 (left panel). Counterstain: FITC Anti-Mouse CD4.

Our Abpromise to you: Quality guaranteed and expert technical support

- Replacement or refund for products not performing as stated on the datasheet
- Valid for 12 months from date of delivery
- Response to your inquiry within 24 hours

- We provide support in Chinese, English, French, German, Japanese and Spanish
- Extensive multi-media technical resources to help you
- We investigate all quality concerns to ensure our products perform to the highest standards

If the product does not perform as described on this datasheet, we will offer a refund or replacement. For full details of the Abpromise, please visit <https://www.abcam.co.jp/abpromise> or contact our technical team.

Terms and conditions

- Guarantee only valid for products bought direct from Abcam or one of our authorized distributors