

APC Anti-GCSF Receptor antibody [06] ab275590

画像数 1

製品の概要

製品名	APC Anti-GCSF Receptor antibody [06]
製品の詳細	APC Mouse monoclonal [06] to GCSF Receptor
由来種	Mouse
標識	APC. Ex: 645nm, Em: 660nm
アプリケーション	適用あり: Flow Cyt
種交差性	交差種: Human
免疫原	Recombinant fragment corresponding to Human GCSF Receptor aa 1-650 (extracellular). NP_000751.1. Extracellular domain with five amino acids at the C-terminus. Database link: Q99062

 [Run BLAST with](#)

 [Run BLAST with](#)

ポジティブ・コントロール Flow Cyt: Human whole blood granulocytes.

特記事項

The Life Science industry has been in the grips of a reproducibility crisis for a number of years. Abcam is leading the way in addressing this with our range of recombinant monoclonal antibodies and knockout edited cell lines for gold-standard validation. Please check that this product meets your needs before purchasing.

If you have any questions, special requirements or concerns, please send us an inquiry and/or contact our Support team ahead of purchase. Recommended alternatives for this product can be found below, along with publications, customer reviews and Q&As

製品の特性

製品の状態	Liquid
保存方法	Shipped at 4°C. Store at +4°C. Do Not Freeze. Store In the Dark.
バッファー	Preservative: 0.09% Sodium azide Constituent: 0.5% BSA
精製度	Protein A purified
ポリ/モノ	モノクローナル
クローン名	06
アイソタイプ	IgG1

アプリケーション

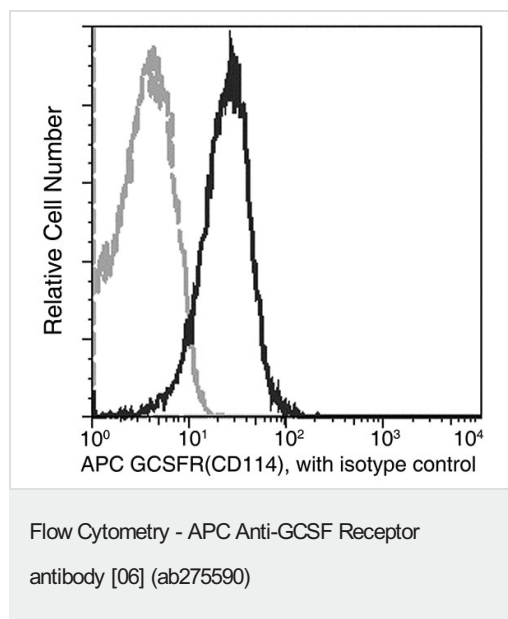
The Abpromise guarantee Abpromise保証は、次のテスト済みアプリケーションにおけるab275590の使用に適用されます
アプリケーションノートには、推奨の開始希釈率がありますが、適切な希釈率につきましてはご検討ください。

アプリケーション	Abreviews	特記事項
Flow Cyt		Use at an assay dependent concentration. Use 10 µl/test.

ターゲット情報

機能	Receptor for granulocyte colony-stimulating factor (CSF3), essential for granulocytic maturation. Plays a crucial role in the proliferation, differentiation and survival of cells along the neutrophilic lineage. In addition it may function in some adhesion or recognition events at the cell surface.
組織特異性	One or several isoforms have been found in myelogenous leukemia cell line KG-1, leukemia U-937 cell line, in bone marrow cells, placenta, and peripheral blood granulocytes. Isoform GCSFR-2 is found only in leukemia U-937 cells. Isoform GCSFR-3 is highly expressed in placenta.
関連疾患	Hereditary neutrophilia
配列類似性	Belongs to the type I cytokine receptor family. Type 2 subfamily. Contains 5 fibronectin type-III domains. Contains 1 Ig-like C2-type (immunoglobulin-like) domain.
ドメイン	The WSXWS motif appears to be necessary for proper protein folding and thereby efficient intracellular transport and cell-surface receptor binding. The box 1 motif is required for JAK interaction and/or activation.
細胞内局在	Secreted and Cell membrane.

画像



Flow cytometric analysis of human whole blood granulocytes labeling GCSF Receptor with ab275590 at 10 µL per test (Black) compared to an isotype control (Grey). The fluorescence histograms were derived from events with the forward and side light-scatter characteristics of viable granulocytes.

Please note: All products are "FOR RESEARCH USE ONLY. NOT FOR USE IN DIAGNOSTIC PROCEDURES"

Our Abpromise to you: Quality guaranteed and expert technical support

- Replacement or refund for products not performing as stated on the datasheet
- Valid for 12 months from date of delivery
- Response to your inquiry within 24 hours

- We provide support in Chinese, English, French, German, Japanese and Spanish
- Extensive multi-media technical resources to help you
- We investigate all quality concerns to ensure our products perform to the highest standards

If the product does not perform as described on this datasheet, we will offer a refund or replacement. For full details of the Abpromise, please visit <https://www.abcam.co.jp/abpromise> or contact our technical team.

Terms and conditions

- Guarantee only valid for products bought direct from Abcam or one of our authorized distributors