

APC Anti-CD300e antibody [UP-H2], prediluted ab188422

画像数 1

製品の概要

製品名	APC Anti-CD300e antibody [UP-H2], prediluted
製品の詳細	APC Mouse monoclonal [UP-H2] to CD300e, prediluted
由来種	Mouse
標識	APC. Ex: 645nm, Em: 660nm
アプリケーション	適用あり: Flow Cyt
種交差性	交差種: Human
免疫原	Tissue, cells or virus corresponding to Human CD300e. (CD300e-HA-transfected cells)
ポジティブ・コントロール	Flow Cyt: Human blood.
特記事項	<p>The Life Science industry has been in the grips of a reproducibility crisis for a number of years. Abcam is leading the way in addressing this with our range of recombinant monoclonal antibodies and knockout edited cell lines for gold-standard validation. Please check that this product meets your needs before purchasing.</p> <p>If you have any questions, special requirements or concerns, please send us an inquiry and/or contact our Support team ahead of purchase. Recommended alternatives for this product can be found below, along with publications, customer reviews and Q&As</p>

製品の特性

製品の状態	Liquid
保存方法	Shipped at 4°C. Store at +4°C. Store In the Dark.
バッファー	<p>pH: 7.4</p> <p>Preservative: 0.097% Sodium azide</p> <p>Constituents: 99% PBS, 0.2% BSA</p>
精製度	Size exclusion
特記事項 (精製)	Purified antibody is conjugated with cross-linked Allophycocyanin (APC) under optimum conditions. The conjugate is purified by size-exclusion chromatography and adjusted for direct use. No reconstitution is necessary.
ポリ/モノ	モノクローナル
クローン名	UP-H2
アイソタイプ	IgG1

アプリケーション

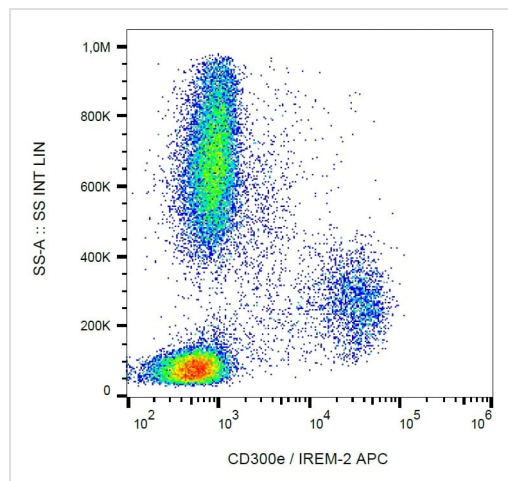
The Abpromise guarantee Abpromise保証は、 次のテスト済みアプリケーションにおけるab188422の使用に適用されます
アプリケーションノートには、推奨の開始希釈率がありますが、適切な希釈率につきましてはご検討ください。

アプリケーション	Abreviews	特記事項
Flow Cyt		Use at an assay dependent concentration. 10 µl reagent / 100 µl of whole blood or 10 ⁶ cells in a suspension.

ターゲット情報

機能	Probably acts as an activating receptor.
組織特異性	Present on the surface of mature hematopoietic cells of the monocyte and myeloid lineages (at protein level).
配列類似性	Belongs to the CD300 family. Contains 1 Ig-like V-type (immunoglobulin-like) domain.
翻訳後修飾	N-glycosylated.
細胞内局在	Cell membrane.

画像



Flow cytometry analysis of human peripheral blood labeling CD300e using ab188422 at 10 µL/100 µL whole blood. Surface staining.

Flow Cytometry - APC Anti-CD300e antibody [UP-H2], prediluted (ab188422)

Please note: All products are "FOR RESEARCH USE ONLY. NOT FOR USE IN DIAGNOSTIC PROCEDURES"

Our Abpromise to you: Quality guaranteed and expert technical support

- Replacement or refund for products not performing as stated on the datasheet

- Valid for 12 months from date of delivery
- Response to your inquiry within 24 hours
- We provide support in Chinese, English, French, German, Japanese and Spanish
- Extensive multi-media technical resources to help you
- We investigate all quality concerns to ensure our products perform to the highest standards

If the product does not perform as described on this datasheet, we will offer a refund or replacement. For full details of the Abpromise, please visit <https://www.abcam.co.jp/abpromise> or contact our technical team.

Terms and conditions

- Guarantee only valid for products bought direct from Abcam or one of our authorized distributors