

### APC Anti-CD11b antibody [M1/70] ab25482

**9 References** [画像数 1](#)

#### 製品の概要

製品名	APC Anti-CD11b antibody [M1/70]
製品の詳細	APC Rat monoclonal [M1/70] to CD11b
由来種	Rat
標識	APC. Ex: 645nm, Em: 660nm
アプリケーション	<b>適用あり:</b> Flow Cyt
種交差性	<b>交差種:</b> Mouse
免疫原	C57BL/10 mouse splenic T cells and concanavaline A-activated C57BL/10 splenocytes
特記事項	Protect the product from prolonged exposure to light.  The Life Science industry has been in the grips of a reproducibility crisis for a number of years. Abcam is leading the way in addressing this with our range of recombinant monoclonal antibodies and knockout edited cell lines for gold-standard validation. Please check that this product meets your needs before purchasing.  If you have any questions, special requirements or concerns, please send us an inquiry and/or contact our Support team ahead of purchase. Recommended alternatives for this product can be found below, along with publications, customer reviews and Q&As

#### 製品の特性

製品の状態	Liquid
保存方法	Shipped at 4°C. Store at +4°C. Do Not Freeze. Please see notes section. Store undiluted.
バッファー	pH: 7.20 Preservative: 0.09% Sodium azide Constituents: 0.1% Gelatin, 0.87% Sodium chloride, 0.142% Monobasic dihydrogen sodium phosphate
精製度	Affinity purified
ポリ/モノ	モノクローナル
クローン名	M1/70
アイソタイプ	IgG2b
軽鎖の種類	kappa

## アプリケーション

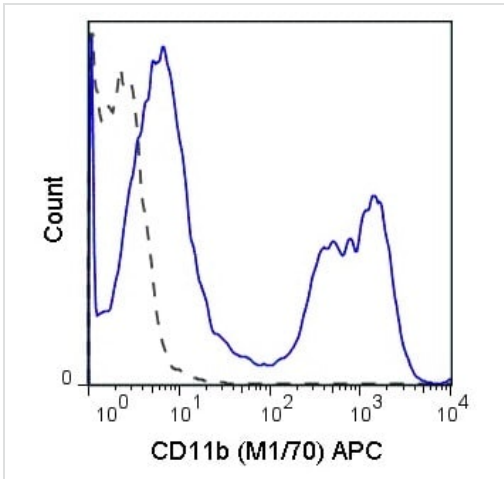
The Abpromise guarantee **Abpromise保証は、次のテスト済みアプリケーションにおけるab25482の使用に適用されず**  
アプリケーションノートには、推奨の開始希釈率がありますが、適切な希釈率につきましてはご確認ください。

アプリケーション	Abreviews	特記事項
Flow Cyt		Use at an assay dependent concentration.

## ターゲット情報

機能	Integrin alpha-M/beta-2 is implicated in various adhesive interactions of monocytes, macrophages and granulocytes as well as in mediating the uptake of complement-coated particles. It is identical with CR-3, the receptor for the iC3b fragment of the third complement component. It probably recognizes the R-G-D peptide in C3b. Integrin alpha-M/beta-2 is also a receptor for fibrinogen, factor X and ICAM1. It recognizes P1 and P2 peptides of fibrinogen gamma chain.
組織特異性	Predominantly expressed in monocytes and granulocytes.
関連疾患	Genetic variations in ITGAM has been associated with susceptibility to systemic lupus erythematosus type 6 (SLEB6) [MIM:609939]. Systemic lupus erythematosus (SLE) is a chronic, inflammatory and often febrile multisystemic disorder of connective tissue. It affects principally the skin, joints, kidneys and serosal membranes. It is thought to represent a failure of the regulatory mechanisms of the autoimmune system.
配列類似性	Belongs to the integrin alpha chain family. Contains 7 FG-GAP repeats. Contains 1 VWFA domain.
ドメイン	The integrin I-domain (insert) is a VWFA domain. Integrins with I-domains do not undergo protease cleavage.
細胞内局在	Membrane.

## 画像



C57Bl/6 bone marrow cells were stained with 0.125µg anti-CD11b (ab25482) (solid line) or 0.125µg APC Rat IgG2b isotype control (dashed line).

Flow Cytometry - APC Anti-CD11b antibody [M1/70] (ab25482)

**Please note:** All products are "FOR RESEARCH USE ONLY. NOT FOR USE IN DIAGNOSTIC PROCEDURES"

### Our Abpromise to you: Quality guaranteed and expert technical support

- Replacement or refund for products not performing as stated on the datasheet
- Valid for 12 months from date of delivery
- Response to your inquiry within 24 hours
- We provide support in Chinese, English, French, German, Japanese and Spanish
- Extensive multi-media technical resources to help you
- We investigate all quality concerns to ensure our products perform to the highest standards

If the product does not perform as described on this datasheet, we will offer a refund or replacement. For full details of the Abpromise, please visit <https://www.abcam.co.jp/abpromise> or contact our technical team.

### Terms and conditions

- Guarantee only valid for products bought direct from Abcam or one of our authorized distributors