

APC Anti-CD11b antibody [EP1345Y] ab221248

リコンビナント RabMAb[®]

画像数 2

製品の概要

製品名	APC Anti-CD11b antibody [EP1345Y]
製品の詳細	APC Rabbit monoclonal [EP1345Y] to CD11b
由来種	Rabbit
標識	APC. Ex: 645nm, Em: 660nm
アプリケーション	適用あり: Flow Cyt (Intra)
種交差性	交差種: Human
免疫原	Synthetic peptide. This information is proprietary to Abcam and/or its suppliers.
ポジティブ・コントロール	Flow Cyt (Intra): human monocytes
特記事項	<p>This product is a recombinant monoclonal antibody, which offers several advantages including:</p> <ul style="list-style-type: none">- High batch-to-batch consistency and reproducibility- Improved sensitivity and specificity- Long-term security of supply- Animal-free production <p>For more information see here.</p> <p>Our RabMAb[®] technology is a patented hybridoma-based technology for making rabbit monoclonal antibodies. For details on our patents, please refer to RabMAb[®] patents.</p>

製品の特性

製品の状態	Liquid
保存方法	Shipped at 4°C. Upon delivery aliquot. Store at +4°C. Store In the Dark.
バッファー	pH: 7.40 Preservative: 0.02% Sodium azide Constituents: PBS, 1% BSA
精製度	Protein A purified
ポリ/モノ	モノクローナル
クローン名	EP1345Y
アイソタイプ	IgG

アプリケーション

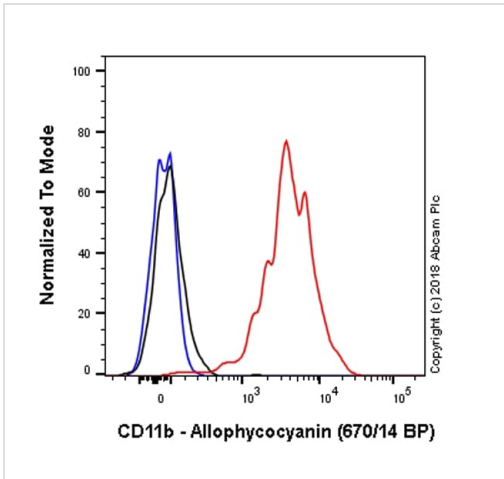
The Abpromise guarantee **Abpromise保証は、次のテスト済みアプリケーションにおけるab221248の使用に適用されず**
アプリケーションノートには、推奨の開始希釈率がありますが、適切な希釈率につきましてはご検討ください。

アプリケーション	Abreviews	特記事項
Flow Cyt (Intra)		1/500. The cellular localisation of this product has been verified in ICC/IF.

ターゲット情報

機能	Integrin alpha-M/beta-2 is implicated in various adhesive interactions of monocytes, macrophages and granulocytes as well as in mediating the uptake of complement-coated particles. It is identical with CR-3, the receptor for the iC3b fragment of the third complement component. It probably recognizes the R-G-D peptide in C3b. Integrin alpha-M/beta-2 is also a receptor for fibrinogen, factor X and ICAM1. It recognizes P1 and P2 peptides of fibrinogen gamma chain.
組織特異性	Predominantly expressed in monocytes and granulocytes.
関連疾患	Genetic variations in ITGAM has been associated with susceptibility to systemic lupus erythematosus type 6 (SLEB6) [MIM:609939]. Systemic lupus erythematosus (SLE) is a chronic, inflammatory and often febrile multisystemic disorder of connective tissue. It affects principally the skin, joints, kidneys and serosal membranes. It is thought to represent a failure of the regulatory mechanisms of the autoimmune system.
配列類似性	Belongs to the integrin alpha chain family. Contains 7 FG-GAP repeats. Contains 1 VWFA domain.
ドメイン	The integrin I-domain (insert) is a VWFA domain. Integrins with I-domains do not undergo protease cleavage.
細胞内局在	Membrane.

画像



Flow Cytometry (Intracellular) - APC Anti-CD11b antibody [EP1345Y] (ab221248)

Overlay histogram showing human CD14+ monocytes stained with ab221248 (red line). Human peripheral blood mononuclear cells were incubated for 30min on ice in 1x PBS containing 10ug/ml human IgG and 10% normal goat serum to block FC receptors and non-specific protein-protein interactions. Then cells were surface stained for CD14 FITC ([ab28061](#)) for 30 min on ice. The cells were then permeabilised with 4.2% formaldehyde and 0.1% saponin for 20 min at 4°C. After cells were blocked with 1xPBS containing 0.1% saponin and 10% normal goat serum for 30 min on ice followed by the antibody (ab221248, 1x10⁶ cells in 100ul at 1ug/ml) for 30 min on ice.

Isotype control antibody (black line) Rabbit IgG (monoclonal) Allophycocyanin ([ab232814](#)) used at the same concentration and conditions as the primary antibody. CD14 FITC single stained cells (blue line) were also used as a control.

Acquisition of >5,000 events were collected using a 40 mW Red laser (640nm) and 670/14 bandpass filter. Events were gated on live single cell CD14+ positive monocytes.

Why choose a recombinant antibody?

<p>Research with confidence Consistent and reproducible results</p>	<p>Long-term and scalable supply Recombinant technology</p>
<p>Success from the first experiment Confirmed specificity</p>	<p>Ethical standards compliant Animal-free production</p>

APC Anti-CD11b antibody [EP1345Y] (ab221248)

Please note: All products are "FOR RESEARCH USE ONLY. NOT FOR USE IN DIAGNOSTIC PROCEDURES"

Our Abpromise to you: Quality guaranteed and expert technical support

- Replacement or refund for products not performing as stated on the datasheet
- Valid for 12 months from date of delivery
- Response to your inquiry within 24 hours
- We provide support in Chinese, English, French, German, Japanese and Spanish
- Extensive multi-media technical resources to help you
- We investigate all quality concerns to ensure our products perform to the highest standards

If the product does not perform as described on this datasheet, we will offer a refund or replacement. For full details of the Abpromise, please visit <https://www.abcam.co.jp/abpromise> or contact our technical team.

Terms and conditions

- Guarantee only valid for products bought direct from Abcam or one of our authorized distributors