

Anti-APAF1 antibody ab2000

★★★★★ [2 Abreviews](#) [12 References](#) [画像数 2](#)

製品の概要

製品名	Anti-APAF1 antibody
製品の詳細	Rabbit polyclonal to APAF1
由来種	Rabbit
アプリケーション	適用あり: IHC-P, WB
種交差性	交差種: Human
免疫原	Synthetic peptide corresponding to Human APAF1 aa 1158-1177 (C terminal). Sequence: TFYTNGTNLKKIHVSPDFKT

(Peptide available as [ab7872](#))

 [Run BLAST with](#)

 [Run BLAST with](#)

特記事項

The Life Science industry has been in the grips of a reproducibility crisis for a number of years. Abcam is leading the way in addressing this with our range of recombinant monoclonal antibodies and knockout edited cell lines for gold-standard validation. Please check that this product meets your needs before purchasing.

If you have any questions, special requirements or concerns, please send us an inquiry and/or contact our Support team ahead of purchase. Recommended alternatives for this product can be found below, along with publications, customer reviews and Q&As

製品の特性

製品の状態	Liquid
保存方法	Shipped at 4°C. Upon delivery aliquot and store at -20°C or -80°C. Avoid repeated freeze / thaw cycles.
バッファー	pH: 7.2 Preservative: 0.02% Sodium azide
精製度	Immunogen affinity purified
ポリモノ	ポリクローナル
アイソタイプ	IgG

アプリケーション

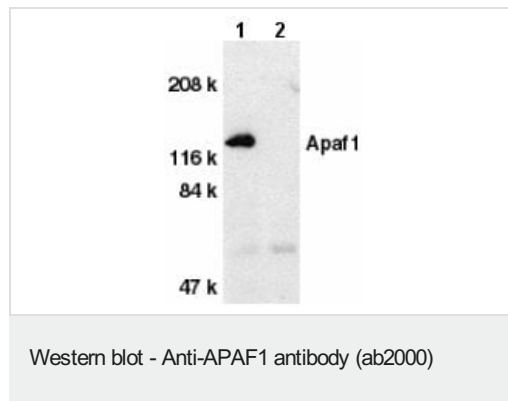
The Abpromise guarantee Abpromise保証は、次のテスト済みアプリケーションにおけるab2000の使用に適用されます
アプリケーションノートには、推奨の開始希釈率がありますが、適切な希釈率につきましてはご確認ください。

アプリケーション	Abreviews	特記事項
IHC-P	★★★★☆ (1)	Use a concentration of 20 µg/ml.
WB	★★★★★ (1)	1/500 - 1/2000. Predicted molecular weight: 130 kDa.

ターゲット情報

機能	Oligomeric Apaf-1 mediates the cytochrome c-dependent autocatalytic activation of pro-caspase-9 (Apaf-3), leading to the activation of caspase-3 and apoptosis. This activation requires ATP. Isoform 6 is less effective in inducing apoptosis.
組織特異性	Ubiquitous. Highest levels of expression in adult spleen and peripheral blood leukocytes, and in fetal brain, kidney and lung. Isoform 1 is expressed in heart, kidney and liver.
配列類似性	Contains 1 CARD domain. Contains 1 NB-ARC domain. Contains 13 WD repeats.
ドメイン	The CARD domain mediates interaction with APIP.
細胞内局在	Cytoplasm.

画像



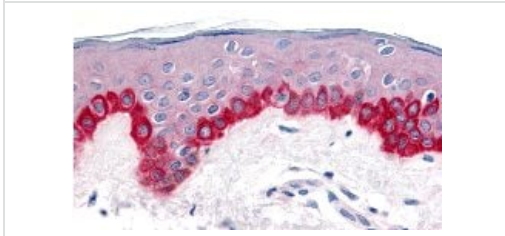
All lanes : Anti-APAF1 antibody (ab2000) at 1 µg/ml

Lane 1 : Human heart tissue lysate with absence of blocking peptide

Lane 2 : Human heart tissue lysate with presence of blocking peptide

Predicted band size: 130 kDa

Observed band size: 130 kDa



Immunohistochemistry of Apaf1 in human skin tissue with Apaf1 antibody at 20 µg/ml.

Immunohistochemistry (Formalin/PFA-fixed paraffin-embedded sections) - Anti-APAF1 antibody (ab2000)

Please note: All products are "FOR RESEARCH USE ONLY. NOT FOR USE IN DIAGNOSTIC PROCEDURES"

Our Abpromise to you: Quality guaranteed and expert technical support

- Replacement or refund for products not performing as stated on the datasheet
- Valid for 12 months from date of delivery
- Response to your inquiry within 24 hours
- We provide support in Chinese, English, French, German, Japanese and Spanish
- Extensive multi-media technical resources to help you
- We investigate all quality concerns to ensure our products perform to the highest standards

If the product does not perform as described on this datasheet, we will offer a refund or replacement. For full details of the Abpromise, please visit <https://www.abcam.co.jp/abpromise> or contact our technical team.

Terms and conditions

- Guarantee only valid for products bought direct from Abcam or one of our authorized distributors