



Anti-AP2 alpha + beta antibody [A6/2/2] ab61

★★★★★ [1 Abreviews](#) [2 References](#) [画像数 1](#)

製品の概要

製品名	Anti-AP2 alpha + beta antibody [A6/2/2]
製品の詳細	Mouse monoclonal [A6/2/2] to AP2 alpha + beta
由来種	Mouse
特異性	Reacts with both AP-2 alpha and beta forms. As the antibody also recognises AP2 beta, the epitope it recognises is probably the last 8 amino acids as these are common between alpha and beta.
アプリケーション	適用あり: ICC/IF
種交差性	交差種: Human
免疫原	Synthetic peptide corresponding to Human AP2 alpha + beta aa 400 to the C-terminus (C terminal) conjugated to keyhole limpet haemocyanin. Database link: P05549
	 Run BLAST with  Run BLAST with
ポジティブ・コントロール	Raji cells or breast carcinoma
特記事項	<p>The Life Science industry has been in the grips of a reproducibility crisis for a number of years. Abcam is leading the way in addressing this with our range of recombinant monoclonal antibodies and knockout edited cell lines for gold-standard validation. Please check that this product meets your needs before purchasing.</p> <p>If you have any questions, special requirements or concerns, please send us an inquiry and/or contact our Support team ahead of purchase. Recommended alternatives for this product can be found below, along with publications, customer reviews and Q&As</p>

製品の特性

製品の状態	Liquid
保存方法	Shipped at 4°C. Store at +4°C short term (1-2 weeks). Upon delivery aliquot. Store at -20°C or -80°C. Avoid freeze / thaw cycle.
バッファー	Preservative: 0.02% Sodium azide Constituent: 99.98% PBS
精製度	Protein A purified
ポリ/モノ	モノクローナル
クローン名	A6/2/2

ミエローマ	NS0
アイソタイプ	IgG1
軽鎖の種類	unknown

アプリケーション

The Abpromise guarantee Abpromise保証は、次のテスト済みアプリケーションにおけるab61の使用に適用されます
アプリケーションノートには、推奨の開始希釈率がありますが、適切な希釈率につきましてはご検討ください。

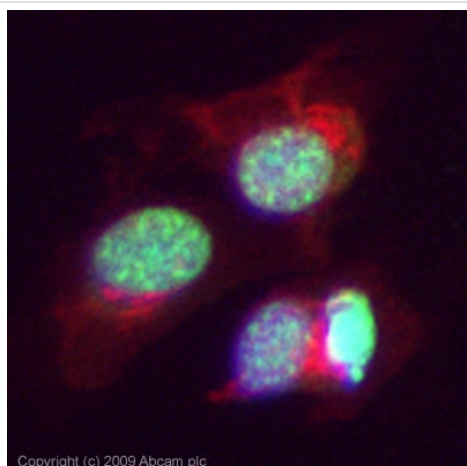
アプリケーション	Abreviews	特記事項
ICC/IF		Use a concentration of 1 µg/ml.

ターゲット情報

関連性 The AP2 proteins are normally expressed in ectodermally derived vertebrate tissues where they are necessary for normal growth and development. The factors have also been implicated in the control of cell proliferation, viral transformation, and oncogenesis. AP2 seems to play an important role in human breast cancer. AP2 alpha is the only AP2 protein required for early morphogenesis of the lens vesicle. AP2 beta appears to be required for normal face and limb development and for proper terminal differentiation and function of renal tubular epithelia

細胞内局在 Nuclear

画像



ICC/IF image of ab61 stained HeLa cells. The cells were 4% PFA fixed (10 min) and then incubated in 1%BSA / 10% normal Goat serum / 0.3M glycine in 0.1% PBS-Tween for 1h to permeabilise the cells and block non-specific protein-protein interactions. The cells were then incubated with the antibody (ab61, 1µg/ml) overnight at +4°C. The secondary antibody (green) was Alexa Fluor® 488 Goat anti-Mouse IgG (H+L) used at a 1/1000 dilution for 1h. Alexa Fluor® 594 WGA was used to label plasma membranes (red) at a 1/200 dilution for 1h. DAPI was used to stain the cell nuclei (blue) at a concentration of 1.43µM.

Immunocytochemistry/ Immunofluorescence - Anti-AP2 alpha + beta antibody [A6/2/2] (ab61)

Please note: All products are "FOR RESEARCH USE ONLY. NOT FOR USE IN DIAGNOSTIC PROCEDURES"

Our Abpromise to you: Quality guaranteed and expert technical support

- Replacement or refund for products not performing as stated on the datasheet
- Valid for 12 months from date of delivery
- Response to your inquiry within 24 hours

- We provide support in Chinese, English, French, German, Japanese and Spanish
- Extensive multi-media technical resources to help you
- We investigate all quality concerns to ensure our products perform to the highest standards

If the product does not perform as described on this datasheet, we will offer a refund or replacement. For full details of the Abpromise, please visit <https://www.abcam.co.jp/abpromise> or contact our technical team.

Terms and conditions

- Guarantee only valid for products bought direct from Abcam or one of our authorized distributors