

# Anti-Annexin A1/ANXA1 antibody ab88865

[3 References](#) [画像数 4](#)

### 製品の概要

---

製品名	Anti-Annexin A1/ANXA1 antibody
製品の詳細	Mouse polyclonal to Annexin A1/ANXA1
由来種	Mouse
アプリケーション	<b>適用あり:</b> WB, IHC-P, ICC/IF
種交差性	<b>交差種:</b> Human
免疫原	Recombinant full length protein within Human Annexin A1/ANXA1. The exact immunogen sequence used to generate this antibody is proprietary information. If additional detail on the immunogen is needed to determine the suitability of the antibody for your needs, please <b>contact</b> our Scientific Support team to discuss your requirements.
ポジティブ・コントロール	Human spleen tissue lysate, Annexin A1 transfected 293T cell lysate, Human endometrium tissue and HeLa cells.
特記事項	<p>The Life Science industry has been in the grips of a reproducibility crisis for a number of years. Abcam is leading the way in addressing this with our range of recombinant monoclonal antibodies and knockout edited cell lines for gold-standard validation. Please check that this product meets your needs before purchasing.</p> <p>If you have any questions, special requirements or concerns, please send us an inquiry and/or contact our Support team ahead of purchase. Recommended alternatives for this product can be found below, along with publications, customer reviews and Q&amp;As</p>

### 製品の特性

---

製品の状態	Liquid
保存方法	Shipped at 4°C. Upon delivery aliquot. Store at -20°C or -80°C. Avoid freeze / thaw cycle.
バッファー	pH: 7.40 Constituent: 100% PBS
精製度	Protein A purified
ポリモノ	ポリクローナル
アイソタイプ	IgG

### アプリケーション

---

## The Abpromise guarantee

**Abpromise保証は、次のテスト済みアプリケーションにおけるab88865の使用に適用されます**

アプリケーションノートには、推奨の開始希釈率がありますが、適切な希釈率につきましてはご検討ください。

アプリケーション	Abreviews	特記事項
WB		
IHC-P		
ICC/IF		

### 追加情報

ICC/IF: Use at a concentration of 10 µg/ml.

IHC-P: Use at a concentration of 3 µg/ml. Perform heat mediated antigen retrieval via the microwave method in 1X citrate buffer (pH 6.0) before commencing with IHC staining protocol.

WB: Use at a concentration of 1 µg/ml. Predicted molecular weight: 39 kDa.

Not yet tested in other applications.

Optimal dilutions/concentrations should be determined by the end user.

### ターゲット情報

#### 機能

Calcium/phospholipid-binding protein which promotes membrane fusion and is involved in exocytosis. This protein regulates phospholipase A2 activity. It seems to bind from two to four calcium ions with high affinity.

#### 配列類似性

Belongs to the annexin family.

Contains 4 annexin repeats.

#### ドメイン

A pair of annexin repeats may form one binding site for calcium and phospholipid.

#### 翻訳後修飾

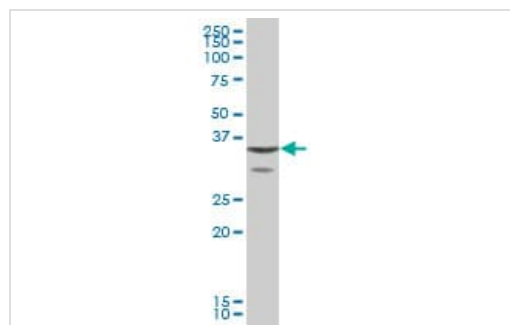
Phosphorylated by protein kinase C, epidermal growth factor receptor/kinase and TRPM7.

Phosphorylation results in loss of the inhibitory activity.

#### 細胞内局在

Nucleus. Cytoplasm. Cell projection > cilium. Basolateral cell membrane. Found in the cilium, nucleus and basolateral cell membrane of ciliated cells in the tracheal endothelium (By similarity). Found in the cytoplasm of type II pneumocytes and alveolar macrophages.

### 画像



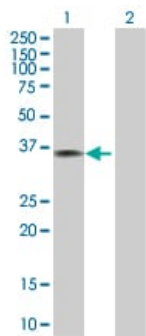
Western blot - Anti-Annexin A1/ANXA1 antibody (ab88865)

Anti-Annexin A1/ANXA1 antibody (ab88865) at 1 µg/ml + human spleen tissue lysate at 50 µg

**Predicted band size:** 39 kDa

**Observed band size:** 35 kDa

**Additional bands at:** 30 kDa. We are unsure as to the identity of these extra bands.



Western blot - Anti-Annexin A1/ANXA1 antibody (ab88865)

**All lanes** : Anti-Annexin A1/ANXA1 antibody (ab88865) at 1 µg/ml

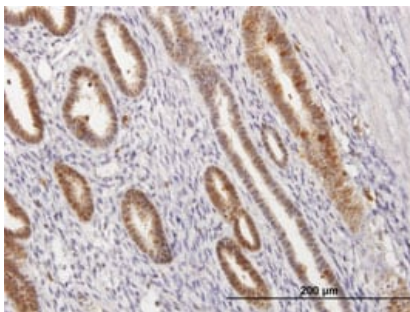
**Lane 1** : Annexin A1 transfected 293T cell lysate

**Lane 2** : Non-transfected 293T cell lysate

Lysates/proteins at 25 µg per lane.

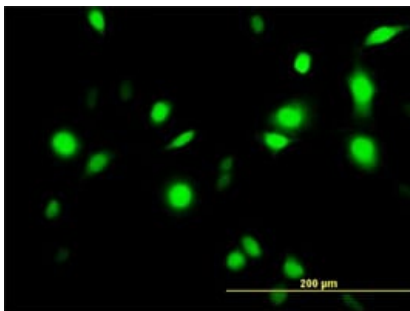
**Predicted band size:** 39 kDa

**Observed band size:** 36 kDa



Immunohistochemistry (Formalin/PFA-fixed paraffin-embedded sections) - Anti-Annexin A1/ANXA1 antibody (ab88865)

ab88865, at 3 µg/ml staining Annexin A1 in formalin-fixed, paraffin-embedded human endometrium by Immunohistochemistry.



Immunocytochemistry/ Immunofluorescence - Anti-Annexin A1/ANXA1 antibody (ab88865)

ab88865, at 10 µg/ml staining Annexin A1 in HeLa cells by Immunofluorescence.

**Please note:** All products are "FOR RESEARCH USE ONLY. NOT FOR USE IN DIAGNOSTIC PROCEDURES"

### Our Abpromise to you: Quality guaranteed and expert technical support

- Replacement or refund for products not performing as stated on the datasheet
- Valid for 12 months from date of delivery
- Response to your inquiry within 24 hours

- We provide support in Chinese, English, French, German, Japanese and Spanish
- Extensive multi-media technical resources to help you
- We investigate all quality concerns to ensure our products perform to the highest standards

If the product does not perform as described on this datasheet, we will offer a refund or replacement. For full details of the Abpromise, please visit <https://www.abcam.co.jp/abpromise> or contact our technical team.

### **Terms and conditions**

---

- Guarantee only valid for products bought direct from Abcam or one of our authorized distributors