


# Anti-Annexin-2/ANXA2 antibody [EPR13052(B)] ab178677

リコンビナント **RabMAb**

**22 References**    **画像数 6**

### 製品の概要

製品名	Anti-Annexin-2/ANXA2 antibody [EPR13052(B)]
製品の詳細	Rabbit monoclonal [EPR13052(B)] to Annexin-2/ANXA2
由来種	Rabbit
アプリケーション	<b>適用あり:</b> Flow Cyt (Intra), WB, IHC-P, ICC/IF <b>適用なし:</b> IP
種交差性	<b>交差種:</b> Human <b>交差が予測される動物種:</b> Mouse, Rat 
免疫原	Synthetic peptide within Human Annexin-2/ANXA2 aa 1-100 (Cysteine residue). The exact sequence is proprietary. Database link: <b><u>P07355</u></b>
ポジティブ・コントロール	HeLa, SKBR-3, K562 and HepG2 whole cell lysate ( <b><u>ab7900</u></b> ); Human liver and prostate tissues; HeLa cells and permeabilized K562 cells.
特記事項	This product is a recombinant monoclonal antibody, which offers several advantages including: <ul style="list-style-type: none"> <li>- High batch-to-batch consistency and reproducibility</li> <li>- Improved sensitivity and specificity</li> <li>- Long-term security of supply</li> <li>- Animal-free production</li> </ul> For more information <b><u>see here</u></b> . Our RabMAb <sup>®</sup> technology is a patented hybridoma-based technology for making rabbit monoclonal antibodies. For details on our patents, please refer to <b><u>RabMAb<sup>®</sup> patents</u></b> .

### 製品の特性

製品の状態	Liquid
保存方法	Shipped at 4°C. Store at +4°C short term (1-2 weeks). Upon delivery aliquot. Store at -20°C long term. Avoid freeze / thaw cycle.
バッファー	pH: 7.20 Preservative: 0.01% Sodium azide Constituents: 59% PBS, 40% Glycerol (glycerin, glycerine), 0.5% BSA
精製度	Protein A purified

ポリ/モノ	モノクローナル
クローン名	EPR13052(B)
アイソタイプ	IgG

## アプリケーション

The Abpromise guarantee Abpromise保証は、 次のテスト済みアプリケーションにおけるab178677の使用に適用されます  
アプリケーションノートには、推奨の開始希釈率がありますが、適切な希釈率につきましてはご検討ください。

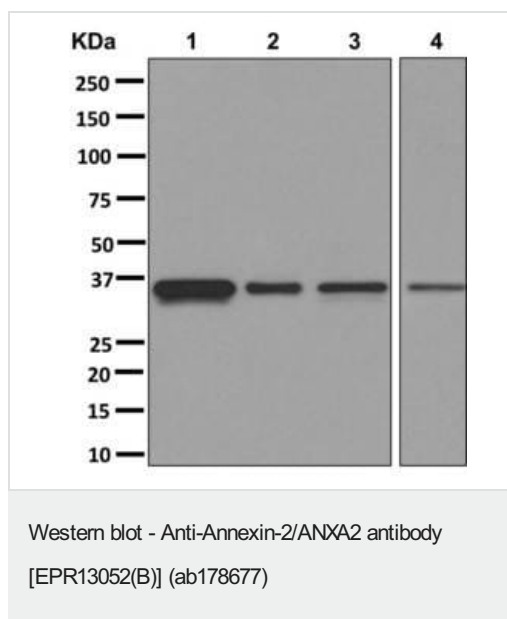
アプリケーション	Abreviews	特記事項
Flow Cyt (Intra)		1/10 - 1/100. <b>ab172730</b> - Rabbit monoclonal IgG, is suitable for use as an isotype control with this antibody.
WB		1/1000 - 1/20000. Predicted molecular weight: 38 kDa.
IHC-P		1/50 - 1/100. Perform heat mediated antigen retrieval with citrate buffer pH 6 before commencing with IHC staining protocol.
ICC/IF		1/100 - 1/250.

追加情報 Is unsuitable for IP.

## ターゲット情報

機能	Calcium-regulated membrane-binding protein whose affinity for calcium is greatly enhanced by anionic phospholipids. It binds two calcium ions with high affinity. May be involved in heat-stress response.
配列類似性	Belongs to the annexin family. Contains 4 annexin repeats.
ドメイン	A pair of annexin repeats may form one binding site for calcium and phospholipid.
翻訳後修飾	Phosphorylation of Tyr-24 enhances heat stress-induced translocation to the cell surface. ISGylated.
細胞内局在	Secreted > extracellular space > extracellular matrix > basement membrane. Melanosome. In the lamina beneath the plasma membrane. Identified by mass spectrometry in melanosome fractions from stage I to stage IV. Translocated from the cytoplasm to the cell surface through a Golgi-independent mechanism.

## 画像



**Lanes 1-3 :** Anti-Annexin-2/ANXA2 antibody [EPR13052(B)]

(ab178677) at 1/20000 dilution

**Lane 4 :** Anti-Annexin-2/ANXA2 antibody [EPR13052(B)]

(ab178677) at 1/5000 dilution

**Lane 1 :** HeLa cell lysate

**Lane 2 :** SKBR-3 cell lysate

**Lane 3 :** K562 cell lysate

**Lane 4 :** HepG2 cell lysate

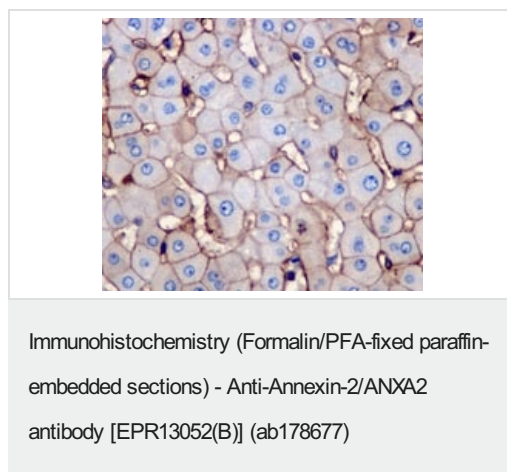
Lysates/proteins at 10 µg per lane.

**Predicted band size:** 38 kDa

#### Exposure time

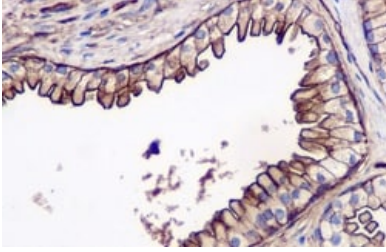
**Lanes 1-3:** 1 minute

**Lane 4:** 3 minutes



Immunohistochemical analysis of paraffin-embedded Human liver tissue labeling Annexin-2/ANXA2 with ab178677 at 1/50 dilution.

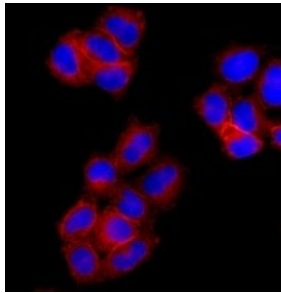
Perform heat mediated antigen retrieval with citrate buffer pH 6 before commencing with IHC staining protocol.



Immunohistochemistry (Formalin/PFA-fixed paraffin-embedded sections) - Anti-Annexin-2/ANXA2 antibody [EPR13052(B)] (ab178677)

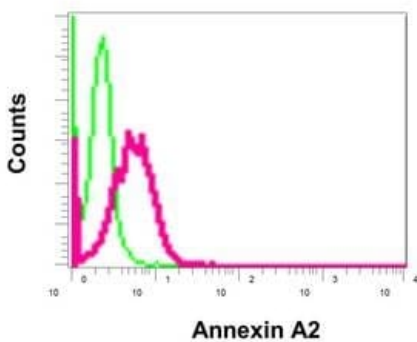
Immunohistochemical analysis of paraffin-embedded Human prostate tissue labeling Annexin-2/ANXA2 with ab178677 at 1/50 dilution.

Perform heat mediated antigen retrieval with citrate buffer pH 6 before commencing with IHC staining protocol.



Immunocytochemistry/ Immunofluorescence - Anti-Annexin-2/ANXA2 antibody [EPR13052(B)] (ab178677)

Immunofluorescent analysis of HeLa cells labeling Annexin-2/ANXA2 with ab178677 at 1/100 dilution (red). DAPI nuclear staining (blue).



Flow Cytometry (Intracellular) - Anti-Annexin-2/ANXA2 antibody [EPR13052(B)] (ab178677)

Intracellular flow cytometric analysis of permeabilized K562 cells labeling Annexin-2/ANXA2 with ab178677 at 1/10 dilution (red) or a rabbit IgG (negative) (green).

### Why choose a recombinant antibody?



**Research with confidence**  
Consistent and reproducible results



**Long-term and scalable supply**  
Recombinant technology



**Success from the first experiment**  
Confirmed specificity



**Ethical standards compliant**  
Animal-free production

Anti-Annexin-2/ANXA2 antibody [EPR13052(B)]  
(ab178677)

**Please note:** All products are "FOR RESEARCH USE ONLY. NOT FOR USE IN DIAGNOSTIC PROCEDURES"

### Our Abpromise to you: Quality guaranteed and expert technical support

- Replacement or refund for products not performing as stated on the datasheet
- Valid for 12 months from date of delivery
- Response to your inquiry within 24 hours
- We provide support in Chinese, English, French, German, Japanese and Spanish
- Extensive multi-media technical resources to help you
- We investigate all quality concerns to ensure our products perform to the highest standards

If the product does not perform as described on this datasheet, we will offer a refund or replacement. For full details of the Abpromise, please visit <https://www.abcam.co.jp/abpromise> or contact our technical team.

### Terms and conditions

- Guarantee only valid for products bought direct from Abcam or one of our authorized distributors