

### Anti-Annexin-2/ANXA2 antibody [D1/274.5] ab269511

リコンビナント

画像数 4

#### 製品の概要

製品名	Anti-Annexin-2/ANXA2 antibody [D1/274.5]
製品の詳細	Mouse monoclonal [D1/274.5] to Annexin-2/ANXA2
由来種	Mouse
アプリケーション	<b>適用あり:</b> ICC/IF, WB <b>適用なし:</b> IP
種交差性	<b>交差種:</b> Human
免疫原	Tissue, cells or virus. This information is proprietary to Abcam and/or its suppliers.
ポジティブ・コントロール	WB: Human ovary cancer tissue lysate. HeLa and HUVEC whole cell lysate. ICC/IF: HeLa and MCF7 cells.
特記事項	<p>This antibody clone is manufactured by Abcam. If you require a custom buffer formulation or conjugation for your experiments, please contact <a href="mailto:orders@abcam.com">orders@abcam.com</a>.</p> <p>This product is a recombinant monoclonal antibody, which offers several advantages including:</p> <ul style="list-style-type: none"><li>- High batch-to-batch consistency and reproducibility</li><li>- Improved sensitivity and specificity</li><li>- Long-term security of supply</li><li>- Animal-free production</li></ul> <p>For more information <a href="#">see here</a>.</p>

#### 製品の特性

製品の状態	Liquid
保存方法	Shipped at 4°C. Store at +4°C short term (1-2 weeks). Upon delivery aliquot. Store at -20°C long term. Avoid freeze / thaw cycle.
バッファー	pH: 7.2 Preservative: 0.01% Sodium azide Constituents: PBS, 0.05% BSA, 40% Glycerol (glycerin, glycerine)
精製度	Protein A purified
ポリ/モノ	モノクローナル
クローン名	D1/274.5

アイソタイプ

IgG2a

## アプリケーション

**The Abpromise guarantee** **Abpromise保証は、次のテスト済みアプリケーションにおけるab269511の使用に適用されず**  
アプリケーションノートには、推奨の開始希釈率がありますが、適切な希釈率につきましてはご確認ください。

アプリケーション	Abreviews	特記事項
ICC/IF		Use a concentration of 15.46 µg/ml.
WB		Use a concentration of 0.773 µg/ml. Predicted molecular weight: 38 kDa.

## 追加情報

Is unsuitable for IP.

## ターゲット情報

### 機能

Calcium-regulated membrane-binding protein whose affinity for calcium is greatly enhanced by anionic phospholipids. It binds two calcium ions with high affinity. May be involved in heat-stress response.

### 配列類似性

Belongs to the annexin family.  
Contains 4 annexin repeats.

### ドメイン

A pair of annexin repeats may form one binding site for calcium and phospholipid.

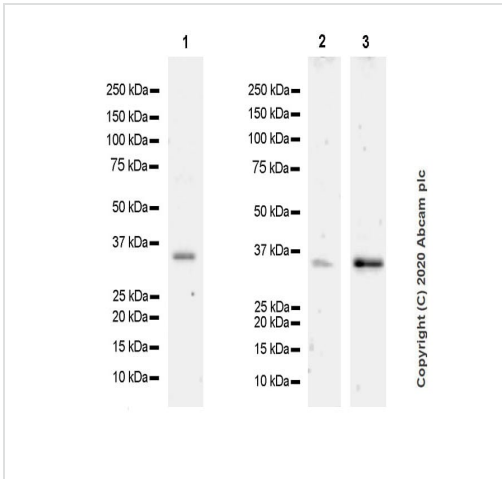
### 翻訳後修飾

Phosphorylation of Tyr-24 enhances heat stress-induced translocation to the cell surface.  
ISGylated.

### 細胞内局在

Secreted > extracellular space > extracellular matrix > basement membrane. Melanosome. In the lamina beneath the plasma membrane. Identified by mass spectrometry in melanosome fractions from stage I to stage IV. Translocated from the cytoplasm to the cell surface through a Golgi-independent mechanism.

## 画像



Western blot - Anti-Annexin-2/ANXA2 antibody [D1/274.5] (ab269511)

**All lanes** : Anti-Annexin-2/ANXA2 antibody [D1/274.5] (ab269511) at 0.773 µg/ml

**Lane 1** : Human ovary cancer tissue lysate

**Lane 2** : HeLa (human cervix adenocarcinoma epithelial cell), whole cell lysate

**Lane 3** : HUVEC (human umbilical vein endothelial cell), whole cell lysate

Lysates/proteins at 20 µg per lane.

### Secondary

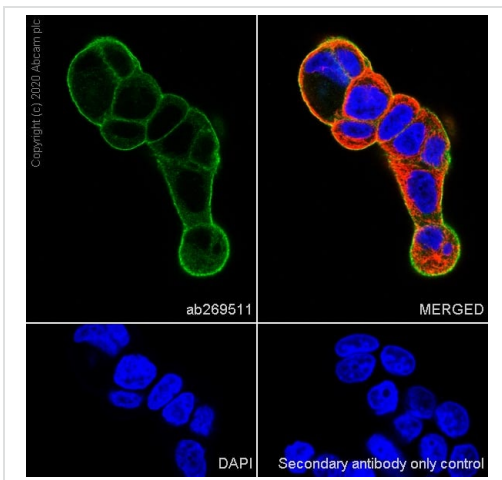
**All lanes** : Peroxidase-Conjugated Goat anti-Mouse IgG (H+L) at 1/5000 dilution

**Predicted band size:** 38 kDa

Blocking and diluting buffer and concentration: 5% NFDN/TBST.

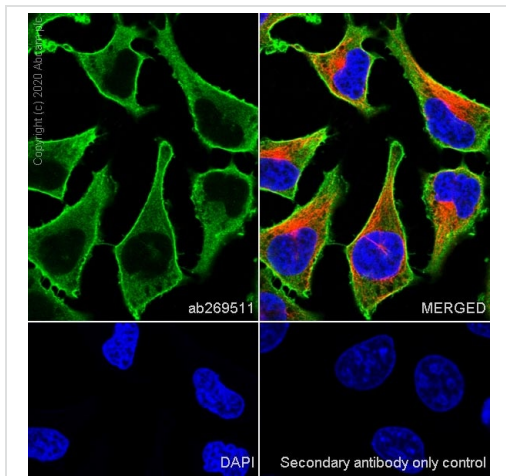
Lane 2-3 of this blot was developed using a higher sensitivity ECL substrate.

Exposure time: 3 minutes.



Immunocytochemistry/ Immunofluorescence - Anti-Annexin-2/ANXA2 antibody [D1/274.5] (ab269511)

Immunofluorescent analysis of 4% Paraformaldehyde-fixed, 0.1% TritonX-100 permeabilized MCF7 (human breast adenocarcinoma cell line) cells labelling Annexin II with ab269511 at 15.46 µg/mL. Secondary antibody only control: Secondary antibody is **ab150113** Goat Anti-Mouse IgG H&L (Alexa Fluor® 488) at 1/1000 dilution., followed by **ab150113** Goat Anti-Mouse IgG H&L (Alexa Fluor® 488) antibody at 1/1000 dilution (Green). Confocal image showing strongly membranous and cytoplasmic staining in MCF7 cells. **ab179513** Anti-beta Tubulin rabbit monoclonal antibody was used to counterstain tubulin at 1/200 dilution (Red). The nuclear counterstain was DAPI (Blue).







Immunocytochemistry/ Immunofluorescence - Anti-Annexin-2/ANXA2 antibody [D1/274.5] (ab269511)

Immunofluorescent analysis of 4% Paraformaldehyde-fixed, 0.1% TritonX-100 permeabilized HeLa (human epithelial cell line from cervix adenocarcinoma) cells labelling Annexin II with ab269511 at 15.46 µg/mL, followed by **ab150113** Goat Anti-Mouse IgG H&L (Alexa Fluor® 488) antibody at 1/1000 dilution (Green). Confocal image showing strongly membranous and cytoplasmic staining in HeLa cells. **ab179513** Anti-beta Tubulin rabbit monoclonal antibody was used to counterstain tubulin at 1/200 dilution (Red). The nuclear counterstain was DAPI (Blue).

Secondary antibody only control: Secondary antibody is **ab150113** Goat Anti-Mouse IgG H&L (Alexa Fluor® 488) at 1/1000 dilution.

Why choose a recombinant antibody?

 <p><b>Research with confidence</b> Consistent and reproducible results</p>	 <p><b>Long-term and scalable supply</b> Recombinant technology</p>
 <p><b>Success from the first experiment</b> Confirmed specificity</p>	 <p><b>Ethical standards compliant</b> Animal-free production</p>

Anti-Annexin-2/ANXA2 antibody [D1/274.5] (ab269511)

**Please note:** All products are "FOR RESEARCH USE ONLY. NOT FOR USE IN DIAGNOSTIC PROCEDURES"

### Our Abpromise to you: Quality guaranteed and expert technical support

- Replacement or refund for products not performing as stated on the datasheet
- Valid for 12 months from date of delivery
- Response to your inquiry within 24 hours
- We provide support in Chinese, English, French, German, Japanese and Spanish

- Extensive multi-media technical resources to help you
- We investigate all quality concerns to ensure our products perform to the highest standards

If the product does not perform as described on this datasheet, we will offer a refund or replacement. For full details of the Abpromise, please visit <https://www.abcam.co.jp/abpromise> or contact our technical team.

### **Terms and conditions**

---

- Guarantee only valid for products bought direct from Abcam or one of our authorized distributors