


# Anti-Annexin-11/ANXA11 antibody ab236599

画像数 4

### 製品の概要

製品名	Anti-Annexin-11/ANXA11 antibody
製品の詳細	Rabbit polyclonal to Annexin-11/ANXA11
由来種	Rabbit
アプリケーション	<b>適用あり:</b> IHC-P, WB, ICC/IF
種交差性	<b>交差種:</b> Human <b>交差が予測される動物種:</b> Mouse, Rabbit, Cow 
免疫原	Recombinant fragment corresponding to Human Annexin-11/ANXA11 aa 250 to the C-terminus. Database link: <a href="#">P50995</a>

 [Run BLAST with](#)

 [Run BLAST with](#)

**ポジティブ・コントロール** WB: U-251 MG cell lysate. IHC-P: Human kidney and placenta tissue. ICC/IF: HeLa cells.

### 特記事項

The Life Science industry has been in the grips of a reproducibility crisis for a number of years. Abcam is leading the way in addressing this with our range of recombinant monoclonal antibodies and knockout edited cell lines for gold-standard validation. Please check that this product meets your needs before purchasing.

If you have any questions, special requirements or concerns, please send us an inquiry and/or contact our Support team ahead of purchase. Recommended alternatives for this product can be found below, along with publications, customer reviews and Q&As

### 製品の特性

製品の状態	Liquid
保存方法	Shipped at 4°C. Store at +4°C short term (1-2 weeks). Upon delivery aliquot. Store at -20°C long term. Avoid freeze / thaw cycle.
バッファー	pH: 7.30 Preservative: 0.02% Sodium azide Constituents: PBS, 50% Glycerol (glycerin, glycerine)
精製度	Immunogen affinity purified
ポリ/モノ	ポリクローナル
アイソタイプ	IgG

## アプリケーション

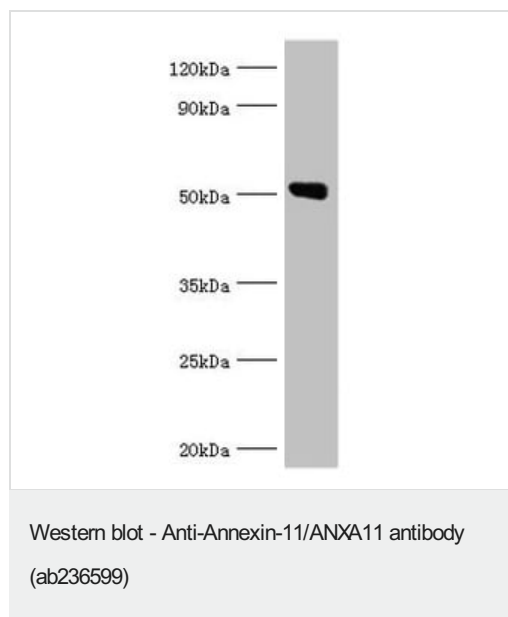
The Abpromise guarantee **Abpromise保証は、次のテスト済みアプリケーションにおけるab236599の使用に適用されず**  
アプリケーションノートには、推奨の開始希釈率がありますが、適切な希釈率につきましてはご検討ください。

アプリケーション	Abreviews	特記事項
IHC-P		1/20 - 1/200.
WB		1/500 - 1/5000.
ICC/IF		1/50 - 1/200.

## ターゲット情報

機能	Binds specifically to calyculin in a calcium-dependent manner (By similarity). Required for midbody formation and completion of the terminal phase of cytokinesis.
配列類似性	Belongs to the annexin family. Contains 4 annexin repeats.
ドメイン	A pair of annexin repeats may form one binding site for calcium and phospholipid.
細胞内局在	Cytoplasm. Melanosome. Nucleus envelope. Nucleus > nucleoplasm. Cytoplasm > cytoskeleton > spindle. Found throughout the nucleoplasm at interphase and during mitosis concentrates around the mitotic apparatus (By similarity). Elevation of intracellular calcium causes relocalization from the nucleoplasm to the nuclear envelope, with little effect on the cytoplasmic pool. Localization to the nuclear envelope is cell-cycle dependent.

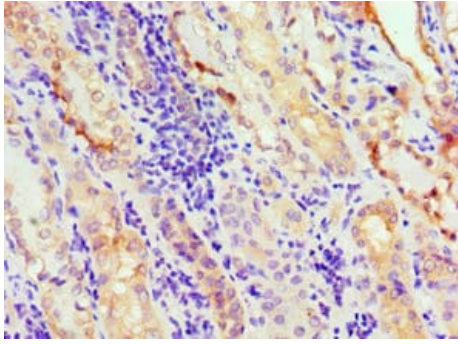
## 画像



Anti-Annexin-11/ANXA11 antibody (ab236599) at 1/500 dilution +  
U-251 MG (human brain glioma cell line) cell lysate

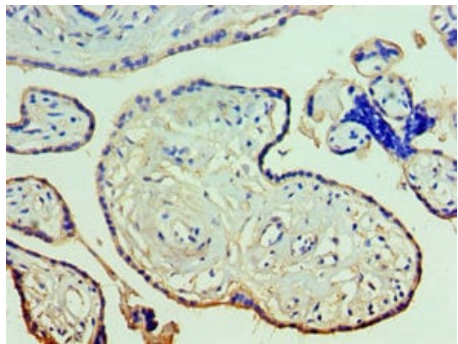
### Secondary

Goat polyclonal to rabbit IgG at 1/10000 dilution



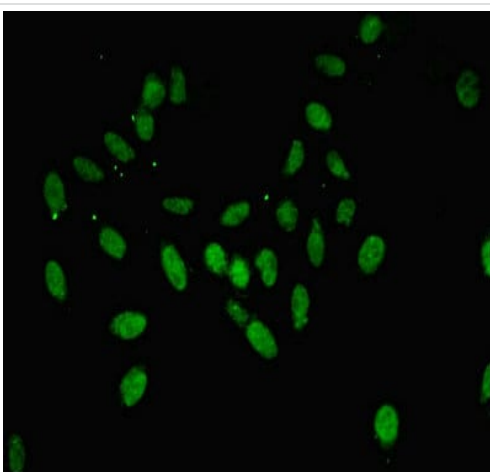
Immunohistochemistry (Formalin/PFA-fixed paraffin-embedded sections) - Anti-Annexin-11/ANXA11 antibody (ab236599)

Paraffin-embedded human kidney tissue stained for Annexin-11/ANXA11 using ab236599 at 1/100 dilution in immunohistochemical analysis.



Immunohistochemistry (Formalin/PFA-fixed paraffin-embedded sections) - Anti-Annexin-11/ANXA11 antibody (ab236599)

Paraffin-embedded human placenta tissue stained for Annexin-11/ANXA11 using ab236599 at 1/100 dilution in immunohistochemical analysis.



Immunocytochemistry/ Immunofluorescence - Anti-Annexin-11/ANXA11 antibody (ab236599)

HeLa (human epithelial cell line from cervix adenocarcinoma) cells labeling Annexin-11/ANXA11 using ab236599 at 1/100 dilution in ICC/IF. Secondary antibody was Alexa Fluor 488-conjugated goat anti-rabbit IgG (H+L).

## **Our Abpromise to you: Quality guaranteed and expert technical support**

---

- Replacement or refund for products not performing as stated on the datasheet
- Valid for 12 months from date of delivery
- Response to your inquiry within 24 hours
  
- We provide support in Chinese, English, French, German, Japanese and Spanish
- Extensive multi-media technical resources to help you
- We investigate all quality concerns to ensure our products perform to the highest standards

If the product does not perform as described on this datasheet, we will offer a refund or replacement. For full details of the Abpromise, please visit <https://www.abcam.co.jp/abpromise> or contact our technical team.

## **Terms and conditions**

---

- Guarantee only valid for products bought direct from Abcam or one of our authorized distributors