

Anti-Angiotensinogen antibody ab103549

画像数 2

製品の概要

製品名	Anti-Angiotensinogen antibody
製品の詳細	Rabbit polyclonal to Angiotensinogen
由来種	Rabbit
アプリケーション	適用あり: WB
種交差性	交差種: Human
免疫原	Recombinant full length protein, corresponding to amino acids 1-485 of Human Angiotensinogen (AAH11519.1).
ポジティブ・コントロール	Human pancreas tissue lysate and 293T cell lysate transfected with Angiotensinogen.
特記事項	<p>The Life Science industry has been in the grips of a reproducibility crisis for a number of years. Abcam is leading the way in addressing this with our range of recombinant monoclonal antibodies and knockout edited cell lines for gold-standard validation. Please check that this product meets your needs before purchasing.</p> <p>If you have any questions, special requirements or concerns, please send us an inquiry and/or contact our Support team ahead of purchase. Recommended alternatives for this product can be found below, along with publications, customer reviews and Q&As</p>

製品の特性

製品の状態	Liquid
保存方法	Shipped at 4°C. Upon delivery aliquot. Store at -20°C or -80°C. Avoid freeze / thaw cycle.
バッファー	pH: 7.40 Constituent: 100% PBS
精製度	Protein A purified
ポリ/モノ	ポリクローナル
アイソタイプ	IgG

アプリケーション

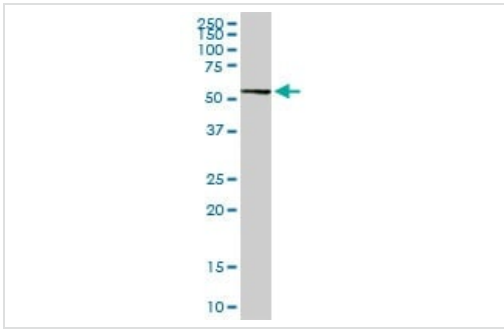
The Abpromise guarantee **Abpromise保証は、** 次のテスト済みアプリケーションにおけるab103549の使用に適用されます
アプリケーションノートには、推奨の開始希釈率がありますが、適切な希釈率につきましてはご検討ください。

アプリケーション	Abreviews	特記事項
WB		1/500 - 1/1000. Predicted molecular weight: 53 kDa.

ターゲット情報

機能	<p>Essential component of the renin-angiotensin system (RAS), a potent regulator of blood pressure, body fluid and electrolyte homeostasis. In response to lowered blood pressure, the enzyme renin cleaves angiotensinogen to produce angiotensin-1 (angiotensin 1-10). Angiotensin-1 is a substrate of ACE (angiotensin converting enzyme) that removes a dipeptide to yield the physiologically active peptide angiotensin-2 (angiotensin 1-8). Angiotensin-1 and angiotensin-2 can be further processed to generate angiotensin-3 (angiotensin 2-8), angiotensin-4 (angiotensin 3-8). Angiotensin 1-7 is cleaved from angiotensin-2 by ACE2 or from angiotensin-1 by MME (nepriylisin). Angiotensin 1-9 is cleaved from angiotensin-1 by ACE2.</p> <p>Angiotensin-2 acts directly on vascular smooth muscle as a potent vasoconstrictor, affects cardiac contractility and heart rate through its action on the sympathetic nervous system, and alters renal sodium and water absorption through its ability to stimulate the zona glomerulosa cells of the adrenal cortex to synthesize and secrete aldosterone.</p> <p>Angiotensin-3 stimulates aldosterone release.</p> <p>Angiotensin 1-7 is a ligand for the G-protein coupled receptor MAS1 (By similarity). Has vasodilator and antidiuretic effects (By similarity). Has an antithrombotic effect that involves MAS1-mediated release of nitric oxide from platelets.</p>
組織特異性	Expressed by the liver and secreted in plasma.
関連疾患	<p>Genetic variations in AGT are a cause of susceptibility to essential hypertension (EHT) [MIM:145500]. Essential hypertension is a condition in which blood pressure is consistently higher than normal with no identifiable cause.</p> <p>Defects in AGT are a cause of renal tubular dysgenesis (RTD) [MIM:267430]. RTD is an autosomal recessive severe disorder of renal tubular development characterized by persistent fetal anuria and perinatal death, probably due to pulmonary hypoplasia from early-onset oligohydramnios (the Potter phenotype).</p>
配列類似性	Belongs to the serpin family.
翻訳後修飾	<p>Beta-decarboxylation of Asp-34 in angiotensin-2, by mononuclear leukocytes produces alanine. The resulting peptide form, angiotensin-A, has the same affinity for the AT1 receptor as angiotensin-2, but a higher affinity for the AT2 receptor.</p>
細胞内局在	Secreted.

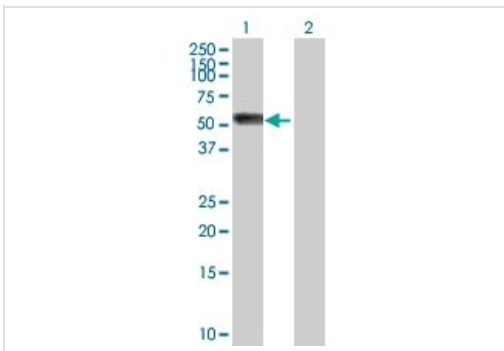
画像



Western blot - Anti-Angiotensinogen antibody (ab103549)

Anti-Angiotensinogen antibody (ab103549) at 1/500 dilution + Human pancreas tissue lysate at 50 µg

Predicted band size: 53 kDa



Western blot - Anti-Angiotensinogen antibody (ab103549)

All lanes : Anti-Angiotensinogen antibody (ab103549) at 1/500 dilution

Lane 1 : Angiotensinogen transfected 293T cell

Lane 2 : Non-transfected 293T cell

Lysates/proteins at 25 µg per lane.

Predicted band size: 53 kDa

Please note: All products are "FOR RESEARCH USE ONLY. NOT FOR USE IN DIAGNOSTIC PROCEDURES"

Our Abpromise to you: Quality guaranteed and expert technical support

- Replacement or refund for products not performing as stated on the datasheet
- Valid for 12 months from date of delivery
- Response to your inquiry within 24 hours
- We provide support in Chinese, English, French, German, Japanese and Spanish
- Extensive multi-media technical resources to help you
- We investigate all quality concerns to ensure our products perform to the highest standards

If the product does not perform as described on this datasheet, we will offer a refund or replacement. For full details of the Abpromise, please visit <https://www.abcam.co.jp/abpromise> or contact our technical team.

Terms and conditions

- Guarantee only valid for products bought direct from Abcam or one of our authorized distributors