


Anti-Angiotensin Converting Enzyme 1 antibody [EPR2757] ab75762

KO 評価済 リコンビナント RabMAb

13 References 画像数 7

製品の概要

製品名	Anti-Angiotensin Converting Enzyme 1 antibody [EPR2757]
製品の詳細	Rabbit monoclonal [EPR2757] to Angiotensin Converting Enzyme 1
由来種	Rabbit
アプリケーション	適用あり: ELISA, WB, IHC-P 適用なし: Flow Cyt, ICC/IF or IP
種交差性	交差種: Human 交差が予測される動物種: Mouse 
免疫原	Synthetic peptide. This information is proprietary to Abcam and/or its suppliers.
ポジティブ・コントロール	Fetal kidney, fetal heart and fetal lung lysates; human kidney and spleen tissues.
特記事項	<p>This product is a recombinant monoclonal antibody, which offers several advantages including:</p> <ul style="list-style-type: none"> - High batch-to-batch consistency and reproducibility - Improved sensitivity and specificity - Long-term security of supply - Animal-free production <p>For more information see here.</p> <p>Our RabMAb[®] technology is a patented hybridoma-based technology for making rabbit monoclonal antibodies. For details on our patents, please refer to RabMAb[®] patents.</p> <p>Rat: We have preliminary internal testing data to indicate this antibody may not react with this species. Please contact us for more information.</p>

製品の特性

製品の状態	Liquid
保存方法	Shipped at 4°C. Upon delivery aliquot and store at -20°C. Avoid freeze / thaw cycles.
バッファー	pH: 7.20 Preservative: 0.01% Sodium azide Constituents: 9% PBS, 40% Glycerol (glycerin, glycerine), 0.05% BSA, 50% Tissue culture supernatant

精製度	Protein A purified
ポリ/モノ	モノクローナル
クローン名	EPR2757
アイソタイプ	IgG

アプリケーション

The Abpromise guarantee **Abpromise保証は、次のテスト済みアプリケーションにおけるab75762の使用に適用されます**
 アプリケーションノートには、推奨の開始希釈率がありますが、適切な希釈率につきましてはご検討ください。

アプリケーション	Abreviews	特記事項
ELISA		Use a concentration of 0.002 - 2 µg/ml.
WB		1/500 - 1/1000. Detects a band of approximately 195 kDa (predicted molecular weight: 150 kDa).
IHC-P		1/100 - 1/250. Perform heat mediated antigen retrieval before commencing with IHC staining protocol.

追加情報 Is unsuitable for Flow Cyt, ICC/IF or IP.

ターゲット情報

機能	Converts angiotensin I to angiotensin II by release of the terminal His-Leu, this results in an increase of the vasoconstrictor activity of angiotensin. Also able to inactivate bradykinin, a potent vasodilator. Has also a glycosidase activity which releases GPI-anchored proteins from the membrane by cleaving the mannose linkage in the GPI moiety.
組織特異性	Ubiquitously expressed, with highest levels in lung, kidney, heart, gastrointestinal system and prostate. Isoform Testis-specific is expressed in spermatocytes and adult testis.
関連疾患	<p>Ischemic stroke (ISCHSTR) [MIM:601367]: A stroke is an acute neurologic event leading to death of neural tissue of the brain and resulting in loss of motor, sensory and/or cognitive function. Ischemic strokes, resulting from vascular occlusion, is considered to be a highly complex disease consisting of a group of heterogeneous disorders with multiple genetic and environmental risk factors. Note=Disease susceptibility is associated with variations affecting the gene represented in this entry.</p> <p>Renal tubular dysgenesis (RTD) [MIM:267430]: Autosomal recessive severe disorder of renal tubular development characterized by persistent fetal anuria and perinatal death, probably due to pulmonary hypoplasia from early-onset oligohydramnios (the Potter phenotype). Note=The disease is caused by mutations affecting the gene represented in this entry.</p> <p>Microvascular complications of diabetes 3 (MVCD3) [MIM:612624]: Pathological conditions that develop in numerous tissues and organs as a consequence of diabetes mellitus. They include diabetic retinopathy, diabetic nephropathy leading to end-stage renal disease, and diabetic neuropathy. Diabetic retinopathy remains the major cause of new-onset blindness among diabetic adults. It is characterized by vascular permeability and increased tissue ischemia and angiogenesis. Note=Disease susceptibility is associated with variations affecting the gene represented in this entry.</p> <p>Intracerebral hemorrhage (ICH) [MIM:614519]: A pathological condition characterized by bleeding</p>

into one or both cerebral hemispheres including the basal ganglia and the cerebral cortex. It is often associated with hypertension and craniocerebral trauma. Intracerebral bleeding is a common cause of stroke. Note=Disease susceptibility is associated with variations affecting the gene represented in this entry.

配列類似性

Belongs to the peptidase M2 family.

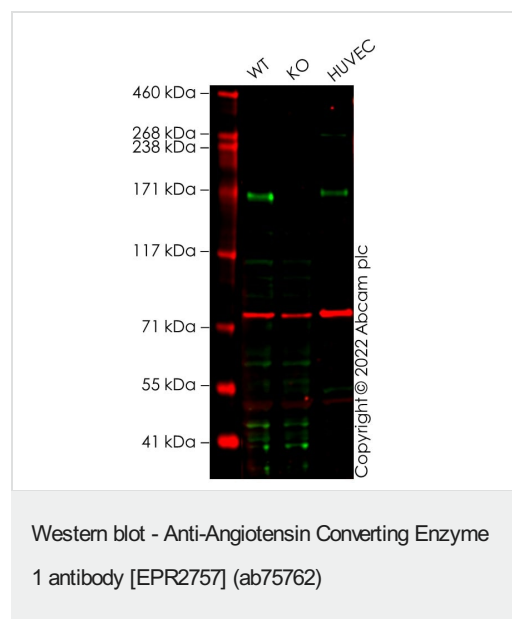
翻訳後修飾

Phosphorylated by CK2 on Ser-1299; which allows membrane retention.

細胞内局在

Secreted and Cell membrane.

画像



All lanes : Anti-Angiotensin Converting Enzyme 1 antibody [EPR2757] (ab75762) at 1/500 dilution

Lane 1 : SKNFI cell lysate

Lane 2 : Ace knockout SKNFI cell lysate

Lane 3 : HUVEC cell lysate

Lysates/proteins at 20 µg per lane.

Secondary

All lanes : Secondary antibodies used were Goat anti-Rabbit IgG H&L 800CW and Goat anti-Mouse IgG H&L 680RD at 1/20000 dilution

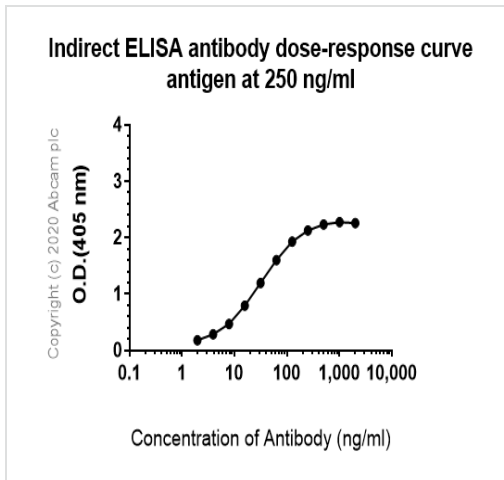
Performed under reducing conditions.

Predicted band size: 150 kDa

Observed band size: 170 kDa

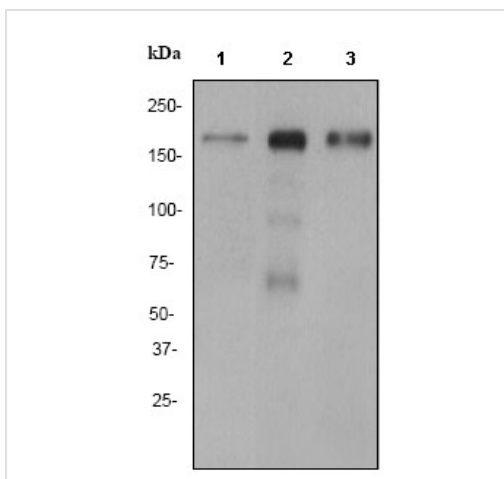
Anti-Angiotensin Converting Enzyme 1 antibody [EPR2757] staining at 1/500 dilution, shown in green; Mouse anti-CANX [CANX/1543] ([ab238078](#)) loading control staining at 1/20000 dilution, shown in red. In Western blot, ab75762 was shown to bind specifically to Angiotensin Converting Enzyme 1. A band was observed at 170 kDa in wild-type SKNFI cell lysates with no signal observed at this size in Ace knockout cell line. To generate this image, wild-type and Ace knockout SKNFI cell lysates were analysed. First, samples were run on an SDS-PAGE gel then transferred onto a nitrocellulose membrane. Membranes were blocked in fluorescent western blot (TBS-based) blocking solution before incubation with primary antibodies overnight at 4 °C. Blots were washed four times in TBS-T, incubated with secondary

antibodies for 1 h at room temperature, washed again four times then imaged. Secondary antibodies used were Goat anti-Rabbit IgG H&L 800CW and Goat anti-Mouse IgG H&L 680RD at 1/20000 dilution.



ELISA - Anti-Angiotensin Converting Enzyme 1 antibody [EPR2757] (ab75762)

ELISA analysis of Human ACE (angiotensin converting enzyme) (membrane form only) recombinant protein at 250ng/ml with ab75762. An Alkaline Phosphatase-conjugated AffiniPure Goat Anti-Rabbit IgG (H+L) at 1/2500 dilution was used as the secondary antibody.



Western blot - Anti-Angiotensin Converting Enzyme 1 antibody [EPR2757] (ab75762)

All lanes : Anti-Angiotensin Converting Enzyme 1 antibody [EPR2757] (ab75762) at 1/1000 dilution

Lane 1 : fetal kidney lysate

Lane 2 : fetal heart lysate

Lane 3 : fetal lung lysate

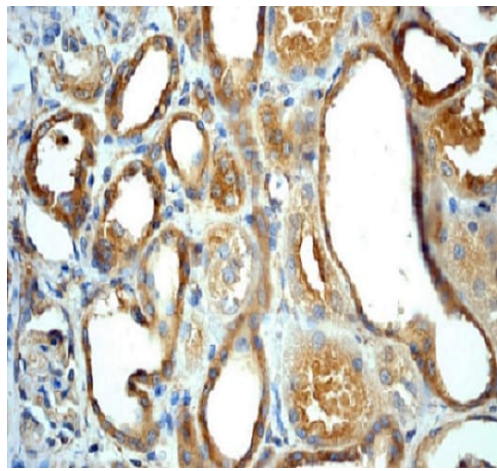
Lysates/proteins at 10 µg per lane.

Secondary

All lanes : goat anti-rabbit HRP at 1/2000 dilution

Predicted band size: 150 kDa

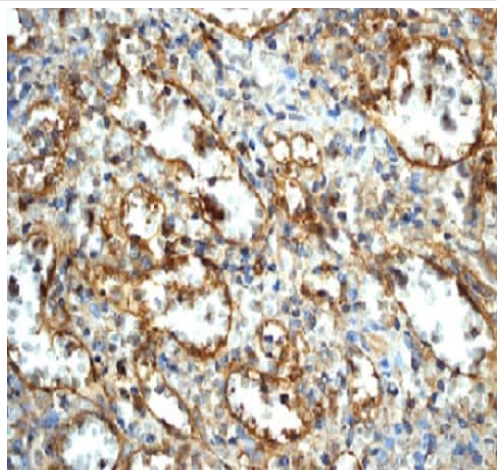
Observed band size: 195 kDa



Immunohistochemistry (Formalin/PFA-fixed paraffin-embedded sections) - Anti-Angiotensin Converting Enzyme 1 antibody [EPR2757] (ab75762)

ab75762 at 1/100 dilution staining Angiotensin Converting Enzyme 1 in human kidney by Immunohistochemistry, Paraffin-embedded tissue.

Perform heat mediated antigen retrieval before commencing with IHC staining protocol.

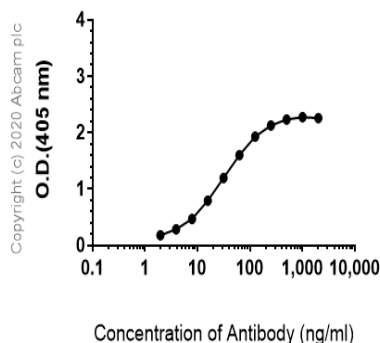


Immunohistochemistry (Formalin/PFA-fixed paraffin-embedded sections) - Anti-Angiotensin Converting Enzyme 1 antibody [EPR2757] (ab75762)

ab75762 at 1/100 dilution staining Angiotensin Converting Enzyme 1 in human spleen by Immunohistochemistry, Paraffin-embedded tissue. Note positive staining of endothelial cells.

Perform heat mediated antigen retrieval before commencing with IHC staining protocol.

Indirect ELISA antibody dose-response curve antigen at 250 ng/ml



ELISA - Anti-Angiotensin Converting Enzyme 1
antibody [EPR2757] (ab75762)

ELISA analysis of Human ACE (angiotensin converting enzyme) (membrane form only) recombinant protein at 250 ng/mL with ab75762. An Alkaline Phosphatase-conjugated AffiniPure Goat Anti-Rabbit IgG (H+L) at 1/2500 dilution was used as the secondary antibody.

Why choose a recombinant antibody?



**Research with
confidence**
Consistent and
reproducible results



**Long-term and
scalable supply**
Recombinant
technology



**Success from the
first experiment**
Confirmed
specificity



**Ethical standards
compliant**
Animal-free
production

Anti-Angiotensin Converting Enzyme 1 antibody
[EPR2757] (ab75762)

Please note: All products are "FOR RESEARCH USE ONLY. NOT FOR USE IN DIAGNOSTIC PROCEDURES"

Our Abpromise to you: Quality guaranteed and expert technical support

- Replacement or refund for products not performing as stated on the datasheet
- Valid for 12 months from date of delivery
- Response to your inquiry within 24 hours
- We provide support in Chinese, English, French, German, Japanese and Spanish
- Extensive multi-media technical resources to help you

- We investigate all quality concerns to ensure our products perform to the highest standards

If the product does not perform as described on this datasheet, we will offer a refund or replacement. For full details of the Abpromise, please visit <https://www.abcam.co.jp/abpromise> or contact our technical team.

Terms and conditions

- Guarantee only valid for products bought direct from Abcam or one of our authorized distributors