

Anti-Angiotensin Converting Enzyme 1 antibody ab216476

★★★★★ [3 Abreviews](#) [2 References](#) [画像数 2](#)

製品の概要

製品名	Anti-Angiotensin Converting Enzyme 1 antibody
製品の詳細	Rabbit polyclonal to Angiotensin Converting Enzyme 1
由来種	Rabbit
アプリケーション	適用あり: IHC-P, WB
種交差性	交差種: Mouse, Rat 交差が予測される動物種: Cat, Human 
免疫原	Synthetic peptide within Human Angiotensin Converting Enzyme 1 aa 800-900 conjugated to keyhole limpet haemocyanin. The exact immunogen sequence used to generate this antibody is proprietary information. If additional detail on the immunogen is needed to determine the suitability of the antibody for your needs, please contact our Scientific Support team to discuss your requirements. Database link: P12821
ポジティブ・コントロール	IHC-P: Rat pancreas tissue. WB: Mouse lung, liver and adrenal lysate.
特記事項	<p>The Life Science industry has been in the grips of a reproducibility crisis for a number of years. Abcam is leading the way in addressing this with our range of recombinant monoclonal antibodies and knockout edited cell lines for gold-standard validation. Please check that this product meets your needs before purchasing.</p> <p>If you have any questions, special requirements or concerns, please send us an inquiry and/or contact our Support team ahead of purchase. Recommended alternatives for this product can be found below, along with publications, customer reviews and Q&As</p>

製品の特性

製品の状態	Liquid
保存方法	Shipped at 4°C. Store at +4°C short term (1-2 weeks). Upon delivery aliquot. Store at -20°C long term. Avoid freeze / thaw cycle.
バッファー	pH: 7.40 Preservative: 0.02% Proclin 300 Constituents: 50% Glycerol (glycerin, glycerine), 1% BSA, 48.98% TBS, 1X
精製度	Protein A purified
ポリ/モノ	ポリクローナル

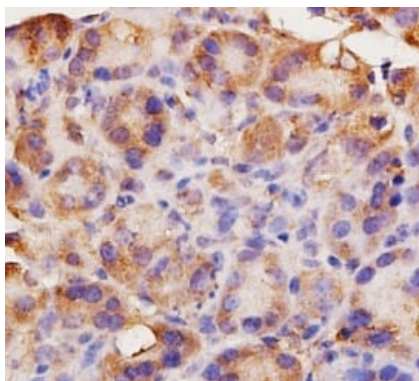
アプリケーション

The Abpromise guarantee Abpromise保証は、 次のテスト済みアプリケーションにおけるab216476の使用に適用されます
アプリケーションノートには、推奨の開始希釈率がありますが、適切な希釈率につきましてはご検討ください。

アプリケーション	Abreviews	特記事項
IHC-P		1/100 - 1/500.
WB	★★★★★ (3)	1/100 - 1/1000. Predicted molecular weight: 150 kDa.

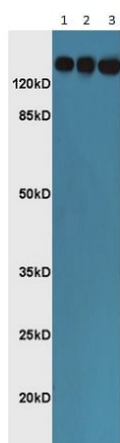
ターゲット情報

機能	Converts angiotensin I to angiotensin II by release of the terminal His-Leu, this results in an increase of the vasoconstrictor activity of angiotensin. Also able to inactivate bradykinin, a potent vasodilator. Has also a glycosidase activity which releases GPI-anchored proteins from the membrane by cleaving the mannose linkage in the GPI moiety.
組織特異性	Ubiquitously expressed, with highest levels in lung, kidney, heart, gastrointestinal system and prostate. Isoform Testis-specific is expressed in spermatocytes and adult testis.
関連疾患	<p>Ischemic stroke (ISCHSTR) [MIM:601367]: A stroke is an acute neurologic event leading to death of neural tissue of the brain and resulting in loss of motor, sensory and/or cognitive function. Ischemic strokes, resulting from vascular occlusion, is considered to be a highly complex disease consisting of a group of heterogeneous disorders with multiple genetic and environmental risk factors. Note=Disease susceptibility is associated with variations affecting the gene represented in this entry.</p> <p>Renal tubular dysgenesis (RTD) [MIM:267430]: Autosomal recessive severe disorder of renal tubular development characterized by persistent fetal anuria and perinatal death, probably due to pulmonary hypoplasia from early-onset oligohydramnios (the Potter phenotype). Note=The disease is caused by mutations affecting the gene represented in this entry.</p> <p>Microvascular complications of diabetes 3 (MVCD3) [MIM:612624]: Pathological conditions that develop in numerous tissues and organs as a consequence of diabetes mellitus. They include diabetic retinopathy, diabetic nephropathy leading to end-stage renal disease, and diabetic neuropathy. Diabetic retinopathy remains the major cause of new-onset blindness among diabetic adults. It is characterized by vascular permeability and increased tissue ischemia and angiogenesis. Note=Disease susceptibility is associated with variations affecting the gene represented in this entry.</p> <p>Intracerebral hemorrhage (ICH) [MIM:614519]: A pathological condition characterized by bleeding into one or both cerebral hemispheres including the basal ganglia and the cerebral cortex. It is often associated with hypertension and craniocerebral trauma. Intracerebral bleeding is a common cause of stroke. Note=Disease susceptibility is associated with variations affecting the gene represented in this entry.</p>
配列類似性	Belongs to the peptidase M2 family.
翻訳後修飾	Phosphorylated by CK2 on Ser-1299; which allows membrane retention.
細胞内局在	Secreted and Cell membrane.



Immunohistochemical analysis of formalin-fixed paraffin-embedded rat pancreas tissue sections labeling Angiotensin Converting Enzyme 1 with ab216476 at a 1/200 dilution. DAB staining.

Immunohistochemistry (Formalin/PFA-fixed paraffin-embedded sections) - Anti-Angiotensin Converting Enzyme 1 antibody (ab216476)



All lanes : Anti-Angiotensin Converting Enzyme 1 antibody (ab216476) at 1/300 dilution

Lane 1 : Mouse lung lysates

Lane 2 : Mouse liver lysates

Lane 3 : Mouse adrenal lysates

Secondary

All lanes : Goat anti-rabbit IgG (H+L), HRP conjugated at 1/5000 dilution

Predicted band size: 150 kDa

Western blot - Anti-Angiotensin Converting Enzyme 1 antibody (ab216476)

Please note: All products are "FOR RESEARCH USE ONLY. NOT FOR USE IN DIAGNOSTIC PROCEDURES"

Our Abpromise to you: Quality guaranteed and expert technical support

- Replacement or refund for products not performing as stated on the datasheet
- Valid for 12 months from date of delivery
- Response to your inquiry within 24 hours
- We provide support in Chinese, English, French, German, Japanese and Spanish
- Extensive multi-media technical resources to help you
- We investigate all quality concerns to ensure our products perform to the highest standards

If the product does not perform as described on this datasheet, we will offer a refund or replacement. For full details of the Abpromise, please visit <https://www.abcam.co.jp/abpromise> or contact our technical team.

Terms and conditions

- Guarantee only valid for products bought direct from Abcam or one of our authorized distributors