

Anti-Angiopoietin 1 + Angiopoietin 2 antibody ab65835

15 References [画像数 3](#)

医薬用外劇物

製品の概要

製品名	Anti-Angiopoietin 1 + Angiopoietin 2 antibody
製品の詳細	Rabbit polyclonal to Angiopoietin 1 + Angiopoietin 2
由来種	Rabbit
アプリケーション	適用あり: ICC/IF, WB
種交差性	交差種: Rat
免疫原	Synthetic peptide corresponding to Human Angiopoietin 1 + Angiopoietin 2 aa 482-496 (C terminal). Sequence: YSLKATTMMIRPADF

Database link: **O15123**
(Peptide available as **ab98299**)

 [Run BLAST with](#)

 [Run BLAST with](#)

ポジティブ・コントロール

WB: Rat brain tissue lysate. ICC: PC12 cells.

特記事項

The Life Science industry has been in the grips of a reproducibility crisis for a number of years. Abcam is leading the way in addressing this with our range of recombinant monoclonal antibodies and knockout edited cell lines for gold-standard validation. Please check that this product meets your needs before purchasing.

If you have any questions, special requirements or concerns, please send us an inquiry and/or contact our Support team ahead of purchase. Recommended alternatives for this product can be found below, along with publications, customer reviews and Q&As

製品の特性

製品の状態	Liquid
保存方法	Shipped at 4°C. Upon delivery aliquot and store at -20°C. Avoid freeze / thaw cycles.
バッファー	Preservatives: 0.025% Sodium azide, 0.025% Thimerosal (merthiolate) Constituents: 0.45% Sodium chloride, 0.1% Dibasic monohydrogen sodium phosphate, 2.5% BSA
精製度	Immunogen affinity purified

ポリ/モノ
アイソタイプ

ポリクローナル
IgG

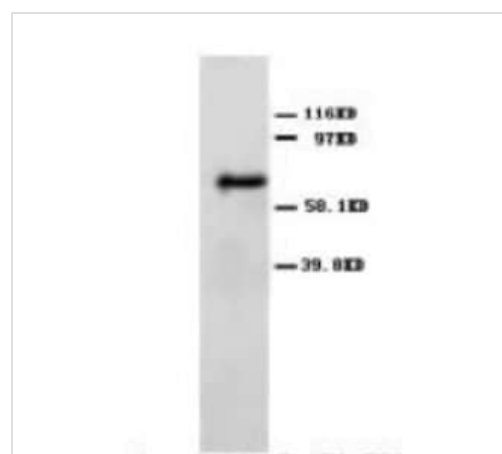
アプリケーション

The Abpromise guarantee Abpromise保証は、 次のテスト済みアプリケーションにおけるab65835の使用に適用されます
アプリケーションノートには、推奨の開始希釈率がありますが、適切な希釈率につきましてはご確認ください。

アプリケーション	Abreviews	特記事項
ICC/IF		Use a concentration of 1 µg/ml.
WB		Use a concentration of 1 - 2 µg/ml. Detects a band of approximately 65 kDa (predicted molecular weight: 57 kDa).

ターゲット情報

画像

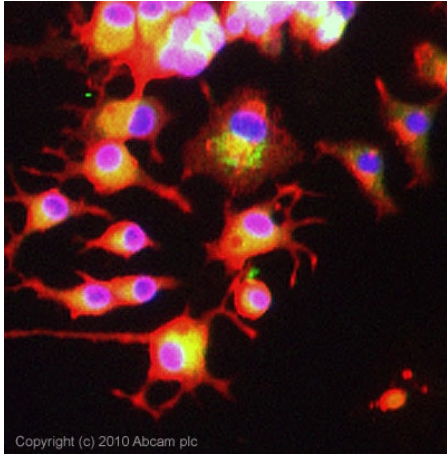


Western blot - Anti-Angiopoietin 1 + Angiopoietin 2 antibody (ab65835)

Anti-Angiopoietin 1 + Angiopoietin 2 antibody (ab65835) at 2 µg/ml
+ rat brain tissue lysate

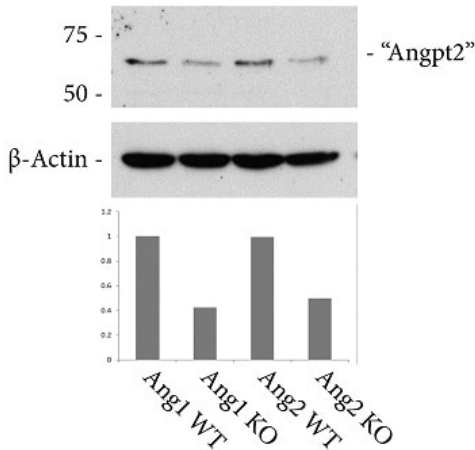
Predicted band size: 57 kDa

Observed band size: 65 kDa



Immunocytochemistry/ Immunofluorescence - Anti-Angiopoietin 1 + Angiopoietin 2 antibody (ab65835)

ICC/IF image of ab65835 stained PC12 cells. The cells were 100% methanol fixed (5 min) and then incubated in 1%BSA / 10% normal goat serum / 0.3M glycine in 0.1% PBS-Tween for 1h to permeabilise the cells and block non-specific protein-protein interactions. The cells were then incubated with the antibody (ab65835, 1µg/ml) overnight at +4°C. The secondary antibody (green) was Alexa Fluor® 488 goat anti-rabbit IgG (H+L) used at a 1/1000 dilution for 1h. Alexa Fluor® 594 WGA was used to label plasma membranes (red) at a 1/200 dilution for 1h. DAPI was used to stain the cell nuclei (blue) at a concentration of 1.43µM.



Western blot - Anti-Angiopoietin 1 + Angiopoietin 2 antibody (ab65835)

Please note: All products are "FOR RESEARCH USE ONLY. NOT FOR USE IN DIAGNOSTIC PROCEDURES"

Our Abpromise to you: Quality guaranteed and expert technical support

- Replacement or refund for products not performing as stated on the datasheet
- Valid for 12 months from date of delivery
- Response to your inquiry within 24 hours
- We provide support in Chinese, English, French, German, Japanese and Spanish
- Extensive multi-media technical resources to help you
- We investigate all quality concerns to ensure our products perform to the highest standards

If the product does not perform as described on this datasheet, we will offer a refund or replacement. For full details of the Abpromise, please visit <https://www.abcam.co.jp/abpromise> or contact our technical team.

Terms and conditions

- Guarantee only valid for products bought direct from Abcam or one of our authorized distributors