

Anti-Ancient ubiquitous protein 1 antibody ab224242

2 References [画像数 3](#)

製品の概要

製品名	Anti-Ancient ubiquitous protein 1 antibody
製品の詳細	Rabbit polyclonal to Ancient ubiquitous protein 1
由来種	Rabbit
アプリケーション	適用あり: WB, IHC-P
種交差性	交差種: Mouse, Rat, Human
免疫原	Recombinant fragment corresponding to Human Ancient ubiquitous protein 1 aa 250-450. Database link: Q9Y679

 [Run BLAST with](#)

 [Run BLAST with](#)

ポジティブ・コントロール WB: RPMI-8226, NIH/3T3 and NBT-II cell lysates. IHC-P: Human pancreas tissue.

特記事項 The Life Science industry has been in the grips of a reproducibility crisis for a number of years. Abcam is leading the way in addressing this with our range of recombinant monoclonal antibodies and knockout edited cell lines for gold-standard validation. Please check that this product meets your needs before purchasing.

If you have any questions, special requirements or concerns, please send us an inquiry and/or contact our Support team ahead of purchase. Recommended alternatives for this product can be found below, along with publications, customer reviews and Q&As

製品の特性

製品の状態	Liquid
保存方法	Shipped at 4°C. Store at +4°C short term (1-2 weeks). Upon delivery aliquot. Store at -20°C long term. Avoid freeze / thaw cycle.
バッファー	pH: 7.20 Preservative: 0.02% Sodium azide Constituents: 40% Glycerol (glycerin, glycerine), PBS
精製度	Immunogen affinity purified
ポリモノ	ポリクローナル
アイソタイプ	IgG

アプリケーション

The Abpromise guarantee

Abpromise保証は、次のテスト済みアプリケーションにおけるab224242の使用に適用されます

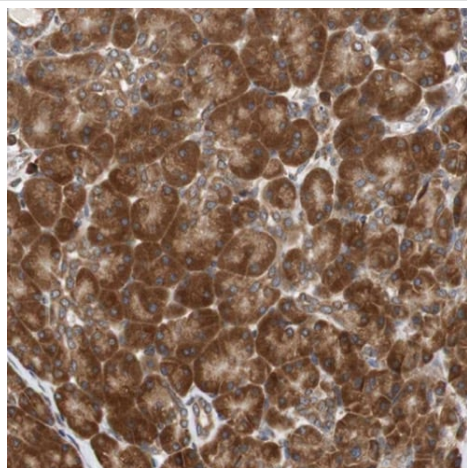
アプリケーションノートには、推奨の開始希釈率がありますが、適切な希釈率につきましてはご検討ください。

アプリケーション	Abreviews	特記事項
WB		Use a concentration of 0.04 - 0.4 µg/ml. Predicted molecular weight: 53 kDa.
IHC-P		1/50 - 1/200. Perform heat mediated antigen retrieval with citrate buffer pH 6 before commencing with IHC staining protocol.

ターゲット情報

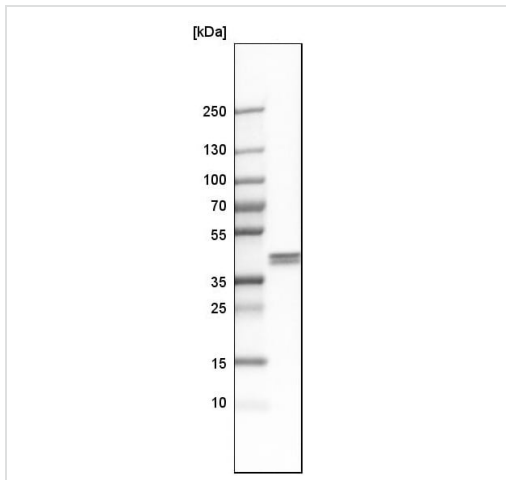
機能	May play a role in the translocation of terminally misfolded proteins from the endoplasmic reticulum lumen to the cytoplasm and their degradation by the proteasome.
組織特異性	Detected in blood platelets and leukocytes (at protein level). Ubiquitous. Highly expressed in placenta, liver, kidney, skeletal muscle, heart and brain.
配列類似性	Belongs to the AUP1 family. Contains 1 CUE domain.
細胞内局在	Endoplasmic reticulum membrane.

画像



Paraffin-embedded human pancreas tissue stained for Ancient ubiquitous protein 1 using ab224242 at 1/50 dilution in immunohistochemical analysis.

Immunohistochemistry (Formalin/PFA-fixed paraffin-embedded sections) - Anti-Ancient ubiquitous protein 1 antibody (ab224242)

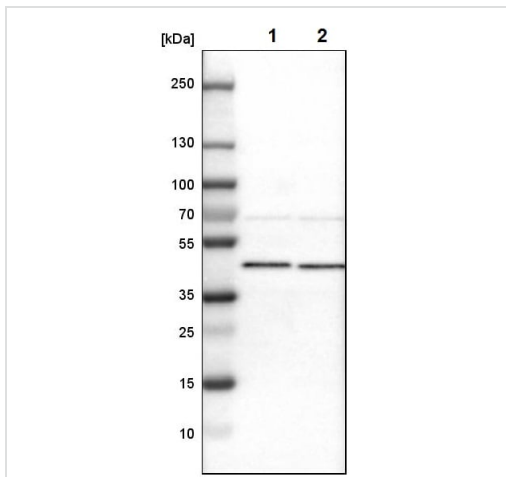


Western blot - Anti-Ancient ubiquitous protein 1 antibody (ab224242)

Anti-Ancient ubiquitous protein 1 antibody (ab224242) at 1/100 dilution + RPMI-8226 cell lysate

Developed using the ECL technique.

Predicted band size: 53 kDa



Western blot - Anti-Ancient ubiquitous protein 1 antibody (ab224242)

All lanes : Anti-Ancient ubiquitous protein 1 antibody (ab224242) at 1/100 dilution

Lane 1 : NIH/3T3 (mouse embryonic fibroblast cell line) cell lysate

Lane 2 : NBT-II cell lysate

Developed using the ECL technique.

Predicted band size: 53 kDa

Please note: All products are "FOR RESEARCH USE ONLY. NOT FOR USE IN DIAGNOSTIC PROCEDURES"

Our Abpromise to you: Quality guaranteed and expert technical support

- Replacement or refund for products not performing as stated on the datasheet
- Valid for 12 months from date of delivery
- Response to your inquiry within 24 hours
- We provide support in Chinese, English, French, German, Japanese and Spanish

- Extensive multi-media technical resources to help you
- We investigate all quality concerns to ensure our products perform to the highest standards

If the product does not perform as described on this datasheet, we will offer a refund or replacement. For full details of the Abpromise, please visit <https://www.abcam.co.jp/abpromise> or contact our technical team.

Terms and conditions

- Guarantee only valid for products bought direct from Abcam or one of our authorized distributors