

Anti-Amyloid A Component antibody [mcl], prediluted ab7505

1 References [画像数 1](#)

製品の概要

製品名	Anti-Amyloid A Component antibody [mcl], prediluted
製品の詳細	Mouse monoclonal [mcl] to Amyloid A Component, prediluted
由来種	Mouse
特異性	This antibody reacts with amyloid deposits in all organs and tissues. It reacts specifically with amyloid A protein in the native fibrils as well as fixed fibrils but does not show any reactivity with non-amyloid A fibril protein.
アプリケーション	適用あり: IHC-P
種交差性	交差種: Human
免疫原	Recombinant full length protein corresponding to Human Amyloid A Component. Human amyloid A protein coupled to horseradish peroxidase and kininogen.
特記事項	<p>The Life Science industry has been in the grips of a reproducibility crisis for a number of years. Abcam is leading the way in addressing this with our range of recombinant monoclonal antibodies and knockout edited cell lines for gold-standard validation. Please check that this product meets your needs before purchasing.</p> <p>If you have any questions, special requirements or concerns, please send us an inquiry and/or contact our Support team ahead of purchase. Recommended alternatives for this product can be found below, along with publications, customer reviews and Q&As</p>

製品の特性

製品の状態	Liquid
保存方法	Shipped at 4°C. Store at +4°C.
バッファー	pH: 7.3 Constituent: PBS
精製度	Protein A purified
ポリ/モノ	モノクローナル
クローン名	mcl
アイソタイプ	IgG2a
軽鎖の種類	kappa

アプリケーション

The Abpromise guarantee

Abpromise保証は、次のテスト済みアプリケーションにおけるab7505の使用に適用されます

アプリケーションノートには、推奨の開始希釈率がありますが、適切な希釈率につきましてはご検討ください。

アプリケーション	Abreviews	特記事項
IHC-P		Use at an assay dependent concentration.

ターゲット情報

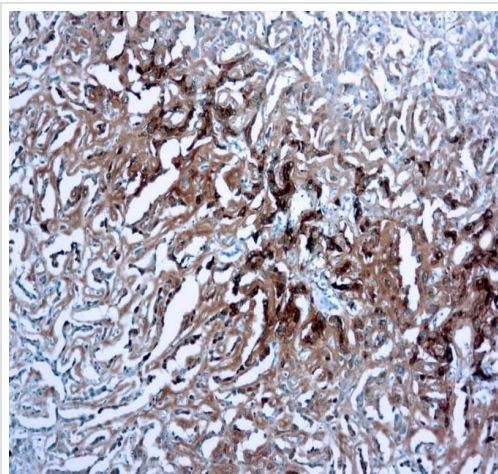
関連性

Serum amyloid A (SAA) proteins are a family of apolipoproteins associated with high-density lipoprotein (HDL) in plasma. Different isoforms of SAA are expressed constitutively (constitutive SAAs) at different levels or in response to inflammatory stimuli (acute phase SAAs). These proteins are produced predominantly by the liver. The conservation of these proteins throughout invertebrates and vertebrates suggests that SAAs play a highly essential role in all animals.

細胞内局在

Extracellular; Amyloid fibrils.

画像



Immunohistochemistry (Formalin fixed paraffin-embedded sections) analysis of human amyloidosis tissue labelling Amyloid A Component with ab7505.

Immunohistochemistry (Formalin/PFA-fixed paraffin-embedded sections) - Anti-Amyloid A Component antibody [mcl], prediluted (ab7505)

Please note: All products are "FOR RESEARCH USE ONLY. NOT FOR USE IN DIAGNOSTIC PROCEDURES"

Our Abpromise to you: Quality guaranteed and expert technical support

- Replacement or refund for products not performing as stated on the datasheet
- Valid for 12 months from date of delivery
- Response to your inquiry within 24 hours

- We provide support in Chinese, English, French, German, Japanese and Spanish
- Extensive multi-media technical resources to help you
- We investigate all quality concerns to ensure our products perform to the highest standards

If the product does not perform as described on this datasheet, we will offer a refund or replacement. For full details of the Abpromise, please visit <https://www.abcam.co.jp/abpromise> or contact our technical team.

Terms and conditions

- Guarantee only valid for products bought direct from Abcam or one of our authorized distributors