

Anti-Amylin/DAP antibody [EPR22556-138] ab254259

リコンビナント **RabMAb**

★★★★★ **2 Abreviews** **1 References** **画像数 9**

製品の概要

製品名	Anti-Amylin/DAP antibody [EPR22556-138]
製品の詳細	Rabbit monoclonal [EPR22556-138] to Amylin/DAP
由来種	Rabbit
アプリケーション	適用あり: Flow Cyt (Intra), IHC-P, IHC-Fr, ICC/IF, IP 適用なし: WB
種交差性	交差種: Mouse, Rat, Human
免疫原	Synthetic peptide. This information is proprietary to Abcam and/or its suppliers.
ポジティブ・コントロール	IHC-P: Human, mouse and rat pancreas tissue. IHC-Fr: Mouse and rat pancreas tissue. ICC/IF: Beta-TC-6 cells. Flow Cyt (intra): Beta-TC-6 cells. IP: Beta-TC-6 whole cell lysate.
特記事項	This product is a recombinant monoclonal antibody, which offers several advantages including: <ul style="list-style-type: none"> - High batch-to-batch consistency and reproducibility - Improved sensitivity and specificity - Long-term security of supply - Animal-free production For more information see here . Our RabMAb [®] technology is a patented hybridoma-based technology for making rabbit monoclonal antibodies. For details on our patents, please refer to RabMAb[®] patents .

製品の特性

製品の状態	Liquid
保存方法	Shipped at 4°C. Store at +4°C short term (1-2 weeks). Upon delivery aliquot. Store at -20°C long term. Avoid freeze / thaw cycle.
バッファー	pH: 7.2 Preservative: 0.01% Sodium azide Constituents: PBS, 0.05% BSA, 40% Glycerol
精製度	Protein A purified
ポリ/モノ	モノクローナル
クローン名	EPR22556-138

アプリケーション

The Abpromise guarantee **Abpromise保証は、次のテスト済みアプリケーションにおけるab254259の使用に適用されず**
アプリケーションノートには、推奨の開始希釈率がありますが、適切な希釈率につきましてはご検討ください。

アプリケーション	Abreviews	特記事項
Flow Cyt (Intra)		1/500.
IHC-P	★★★★★ (2)	1/2000. Perform heat mediated antigen retrieval with Tris/EDTA buffer pH 9.0 before commencing with IHC staining protocol.
IHC-Fr		1/500. Heat mediated antigen retrieval using sodium citrate buffer (10 mM citrate pH 6.0 and 0.05% Tween-20).
ICC/IF		1/1000.
IP		1/30.

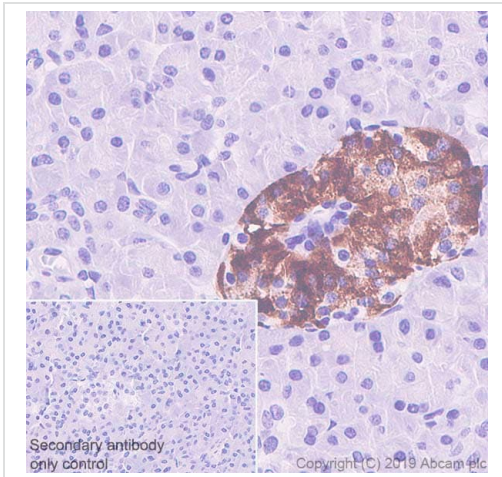
追加情報

Is unsuitable for WB.

ターゲット情報

機能	Selectively inhibits insulin-stimulated glucose utilization and glycogen deposition in muscle, while not affecting adipocyte glucose metabolism.
配列類似性	Belongs to the calcitonin family.
ドメイン	The mature protein is largely unstructured in the absence of a cognate ligand, and has a strong tendency to form fibrillar aggregates. Homodimerization may be the first step of amyloid formation.
翻訳後修飾	Amyloid fibrils are degraded by IDE.
細胞内局在	Secreted.

画像

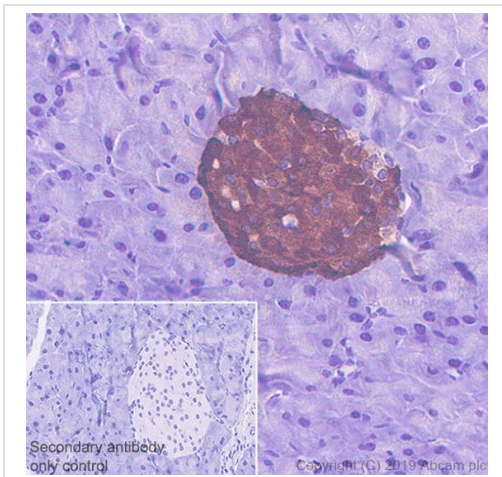


Immunohistochemistry (Formalin/PFA-fixed paraffin-embedded sections) - Anti-Amylin/DAP antibody [EPR22556-138] (ab254259)

Immunohistochemical analysis of paraffin-embedded human pancreas tissue labeling Amylin/DAP with ab254259 at 1/2000 dilution, followed by ready to use Rabbit specific IHC polymer detection kit HRP/DAB (**ab209101**). Cytoplasmic staining on the islet in human pancreas (PMID: 30014749). The section was incubated with ab254259 for 30 mins at room temperature. The immunostaining was performed on a Leica Biosystems BOND[®] RX instrument. Counterstained with hematoxylin.

Secondary antibody only control: Used PBS instead of primary antibody, secondary antibody is ready to use Rabbit specific IHC polymer detection kit HRP/DAB (**ab209101**).

Heat mediated antigen retrieval with Tris-EDTA buffer (pH 9.0, epitope retrieval solution 2) for 20 mins.

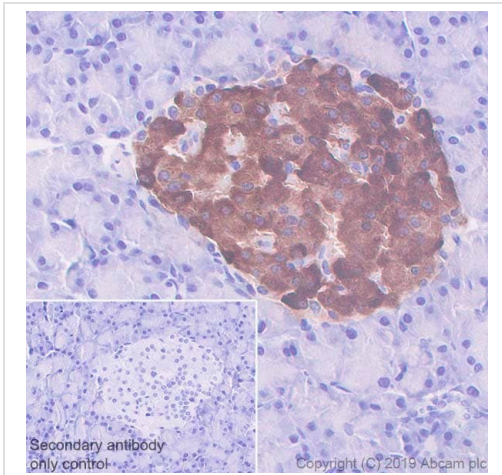


Immunohistochemistry (Formalin/PFA-fixed paraffin-embedded sections) - Anti-Amylin/DAP antibody [EPR22556-138] (ab254259)

Immunohistochemical analysis of paraffin-embedded mouse pancreas tissue labeling Amylin/DAP with ab254259 at 1/2000 dilution, followed by ready to use Rabbit specific IHC polymer detection kit HRP/DAB (**ab209101**). Cytoplasmic staining on the islet in mouse pancreas (PMID: 30014749). The section was incubated with ab254259 for 10 mins at room temperature. The immunostaining was performed on a Leica Biosystems BOND[®] RX instrument. Counterstained with hematoxylin.

Secondary antibody only control: Used PBS instead of primary antibody, secondary antibody is ready to use Rabbit specific IHC polymer detection kit HRP/DAB (**ab209101**).

Heat mediated antigen retrieval with Tris-EDTA buffer (pH 9.0, epitope retrieval solution 2) for 20 mins.

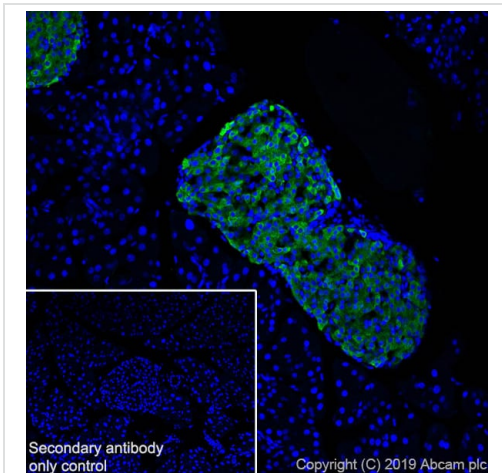


Immunohistochemistry (Formalin/PFA-fixed paraffin-embedded sections) - Anti-Amylin/DAP antibody [EPR22556-138] (ab254259)

Immunohistochemical analysis of paraffin-embedded rat pancreas tissue labeling Amylin/DAP with ab254259 at 1/2000 dilution, followed by ready to use Rabbit specific IHC polymer detection kit HRP/DAB (**ab209101**). Cytoplasmic staining on the islet in rat pancreas (PMID: 30014749). The section was incubated with ab254259 for 30 mins at room temperature. The immunostaining was performed on a Leica Biosystems BOND[®] RX instrument. Counterstained with hematoxylin.

Secondary antibody only control: Used PBS instead of primary antibody, secondary antibody is ready to use Rabbit specific IHC polymer detection kit HRP/DAB (**ab209101**).

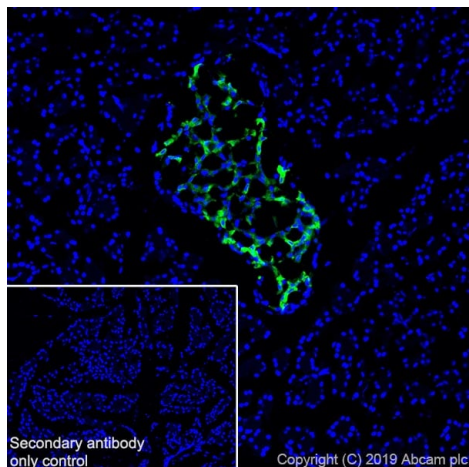
Heat mediated antigen retrieval with Tris-EDTA buffer (pH 9.0, epitope retrieval solution 2) for 20 mins.



Immunohistochemistry (Frozen sections) - Anti-Amylin/DAP antibody [EPR22556-138] (ab254259)

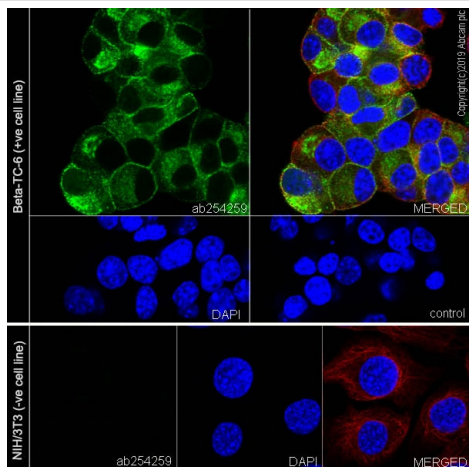
Immunohistochemical analysis of 4% PFA-fixed, 0.2% Triton X-100 permeabilized frozen mouse pancreas tissue labeling Amylin/DAP with ab254259 at 1/500 dilution (green), followed by **ab150077** AlexaFluor[®]488 Goat anti-Rabbit secondary at a 1/1,000 dilution. Positive staining on beta cells of mouse pancreatic islets (PMID: 14656003) is observed. Counterstained with DAPI (blue).

Secondary antibody only control: Used PBS instead of primary antibody, secondary antibody is **ab150077** AlexaFluor[®]488 Goat anti-Rabbit used at a 1/1,000 dilution. Heat mediated antigen retrieval using sodium citrate buffer (10 mM citrate pH 6.0 and 0.05% Tween-20).



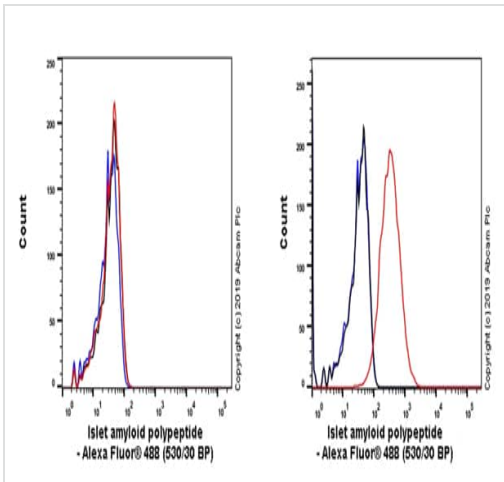
Immunohistochemistry (Frozen sections) - Anti-Amylin/DAP antibody [EPR22556-138] (ab254259)

Immunohistochemical analysis of 4% PFA-fixed, 0.2% Triton X-100 permeabilized frozen rat pancreas tissue labeling Amylin/DAP with ab254259 at 1/500 dilution (green), followed by **ab150077** AlexaFluor[®]488 Goat anti-Rabbit secondary at a 1/1,000 dilution. Positive staining on beta cells of rat pancreatic islets (PMID: 14656003) is observed. Counterstained with DAPI (blue). Secondary antibody only control: Used PBS instead of primary antibody, secondary antibody is **ab150077** AlexaFluor[®]488 Goat anti-Rabbit used at a 1/1,000 dilution. Heat mediated antigen retrieval using sodium citrate buffer (10 mM citrate pH 6.0 and 0.05% Tween-20).



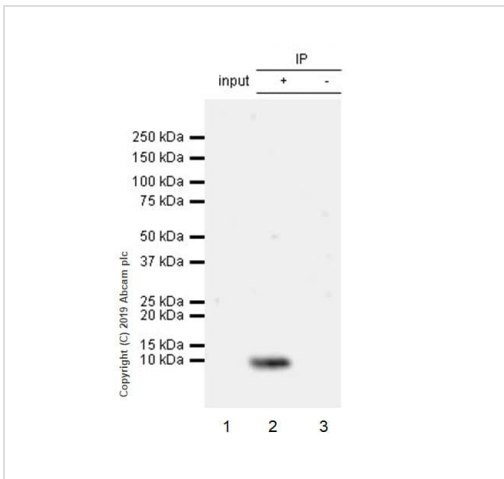
Immunocytochemistry/ Immunofluorescence - Anti-Amylin/DAP antibody [EPR22556-138] (ab254259)

Immunofluorescent analysis of 4% paraformaldehyde-fixed, 0.1% Triton X-100 permeabilized Beta-TC-6 (mouse pancreas insulinoma beta cell) cells labeling Amylin/DAP with ab254259 at 1/1000 dilution, followed by Goat Anti-Rabbit IgG H&L (Alexa Fluor[®] 488) (**ab150077**) secondary antibody at 1/1000 dilution (green). Confocal image showing cytoplasmic and membranous staining in Beta-TC-6 cell line. **Negative control:** NIH/3T3 (PMID:15802374). The nuclear counter stain is DAPI (blue). Counterstained with **ab195889** Anti-alpha Tubulin antibody [DM1A] - Microtubule Marker (Alexa Fluor[®] 594) at a 1/200 dilution (red). The negative control is the secondary antibody only.



Flow Cytometry (Intracellular) - Anti-Amylin/DAP antibody [EPR22556-138] (ab254259)

Intracellular flow cytometric analysis of 4% paraformaldehyde-fixed, 90% methanol permeabilized NIH/3T3 (Mouse embryonic fibroblast, Left) / Beta-TC-6 (Mouse pancreas insulinoma beta cell, Right) cell lines labeling Amylin/DAP with ab254259 at 1/500 (red) compared with a Rabbit monoclonal IgG isotype control (**ab172730**) (black) and an unlabeled control (cells without incubation with primary antibody and secondary antibody) (blue). Goat anti rabbit IgG (Alexa Fluor® 488, **ab150077**), at 1/2000 dilution was used as the secondary antibody. **Negative control:** NIH/3T3 (PMID:15802374).



Immunoprecipitation - Anti-Amylin/DAP antibody [EPR22556-138] (ab254259)

Amylin/DAP was immunoprecipitated from 0.35 mg Beta-TC-6 (mouse pancreas insulinoma beta cell) whole cell lysate with ab254259 at 1/30 dilution. Western blot was performed from the immunoprecipitate using ab254259 at 1/1000 dilution. VeriBlot for IP Detection Reagent (HRP) (**ab131366**), was used at 1/5000 dilution.

Lane 1: Beta-TC-6 whole cell lysate 10 µg (Input).





Lane 2: ab254259 IP in Beta-TC-6 whole cell lysate.

Lane 3: Rabbit monoclonal IgG (**ab172730**) instead of ab254259 in Beta-TC-6 whole cell lysate.

Blocking/Dilution buffer: 5% NFDm/TBST.

Exposure time: 3 minutes.

Why choose a recombinant antibody?

 <p>Research with confidence Consistent and reproducible results</p>	 <p>Long-term and scalable supply Recombinant technology</p>
 <p>Success from the first experiment Confirmed specificity</p>	 <p>Ethical standards compliant Animal-free production</p>

Anti-Amylin/DAP antibody [EPR22556-138]
(ab254259)

Please note: All products are "FOR RESEARCH USE ONLY. NOT FOR USE IN DIAGNOSTIC PROCEDURES"

Our Abpromise to you: Quality guaranteed and expert technical support

- Replacement or refund for products not performing as stated on the datasheet
- Valid for 12 months from date of delivery
- Response to your inquiry within 24 hours
- We provide support in Chinese, English, French, German, Japanese and Spanish
- Extensive multi-media technical resources to help you
- We investigate all quality concerns to ensure our products perform to the highest standards

If the product does not perform as described on this datasheet, we will offer a refund or replacement. For full details of the Abpromise, please visit <https://www.abcam.co.jp/abpromise> or contact our technical team.

Terms and conditions

- Guarantee only valid for products bought direct from Abcam or one of our authorized distributors