

### Anti-AMF antibody [EPR11663(B)] ab167394

KO 評価済 リコンビナント RabMAb

★★★★☆ 1 Abreviews 1 References 画像数 12

#### 製品の概要

製品名	Anti-AMF antibody [EPR11663(B)]
製品の詳細	Rabbit monoclonal [EPR11663(B)] to AMF
由来種	Rabbit
アプリケーション	<b>適用あり:</b> Flow Cyt (Intra), WB, IHC-P, ICC/IF <b>適用なし:</b> IP
種交差性	<b>交差種:</b> Human
免疫原	Synthetic peptide corresponding to Human AMF. Database link: <a href="#">P06744</a>
ポジティブ・コントロール	WB: HEK-293T, HepG2, HeLa, HT29, and A549 cell lysates. IHC-P: Human brain, pancreas, skeletal muscle, ovarian carcinoma, prostatic hyperplasia and thyroid carcinoma tissues. ICC/IF: MCF7 and HepG2 cells. Flow Cyt (intra): A549 cells.
特記事項	<p>This product is a recombinant monoclonal antibody, which offers several advantages including:</p> <ul style="list-style-type: none"> <li>- High batch-to-batch consistency and reproducibility</li> <li>- Improved sensitivity and specificity</li> <li>- Long-term security of supply</li> <li>- Animal-free production</li> </ul> <p>For more information <a href="#">see here</a>.</p> <p>Our RabMAb<sup>®</sup> technology is a patented hybridoma-based technology for making rabbit monoclonal antibodies. For details on our patents, please refer to <a href="#">RabMAb<sup>®</sup> patents</a>.</p> <p>Mouse, Rat: We have preliminary internal testing data to indicate this antibody may not react with these species. Please contact us for more information.</p>

#### 製品の特性

製品の状態	Liquid
保存方法	Shipped at 4°C. Store at +4°C short term (1-2 weeks). Upon delivery aliquot. Store at -20°C long term. Avoid freeze / thaw cycle.
バッファー	<p>pH: 7.2</p> <p>Preservative: 0.01% Sodium azide</p> <p>Constituents: 9% PBS, 40% Glycerol (glycerin, glycerine), 0.05% BSA, 50% Tissue culture</p>

	supernatant
精製度	Tissue culture supernatant
ポリ/モノ	モノクローナル
クローン名	EPR11663(B)
アイソタイプ	IgG

アプリケーション

The Abpromise guarantee      **Abpromise保証は、次のテスト済みアプリケーションにおけるab167394の使用に適用されます**  
アプリケーションノートには、推奨の開始希釈率がありますが、適切な希釈率につきましてはご検討ください。

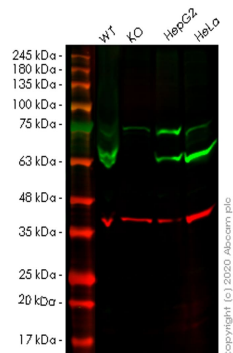
アプリケーション	Abreviews	特記事項
Flow Cyt (Intra)		1/10 - 1/100. <b>ab172730</b> - Rabbit monoclonal IgG, is suitable for use as an isotype control with this antibody.
WB	★★★★★ (1)	1/1000 - 1/10000. Predicted molecular weight: 63 kDa.
IHC-P		1/100 - 1/250. Perform heat mediated antigen retrieval with citrate buffer pH 6 before commencing with IHC staining protocol.
ICC/IF		1/100 - 1/500.

追加情報      Is unsuitable for IP.

ターゲット情報

機能	Besides it's role as a glycolytic enzyme, mammalian GPI can function as a tumor-secreted cytokine and an angiogenic factor (AMF) that stimulates endothelial cell motility. GPI is also a neurotrophic factor (Neuroleukin) for spinal and sensory neurons.
パスウェイ	Carbohydrate degradation; glycolysis; D-glyceraldehyde 3-phosphate and glyceralone phosphate from D-glucose: step 2/4.
関連疾患	Defects in GPI are the cause of hemolytic anemia non-spherocytic due to glucose phosphate isomerase deficiency (HA-GPID) [MIM:613470]. It is a form of anemia in which there is no abnormal hemoglobin or spherocytosis. It is caused by glucose phosphate isomerase deficiency. Severe GPI deficiency can be associated with hydrops fetalis, immediate neonatal death and neurological impairment.
配列類似性	Belongs to the GPI family.
翻訳後修飾	Phosphorylation at Ser-185 by CK2 has been shown to decrease enzymatic activity and may contribute to secretion by a non-classical secretory pathway. ISGylated.
細胞内局在	Cytoplasm. Secreted.

画像



Western blot - Anti-AMF antibody [EPR11663(B)]  
(ab167394)

**All lanes :** Anti-AMF antibody [EPR11663(B)] (ab167394) at 1/1000 dilution

**Lane 1 :** Wild-type HEK293T cell lysate

**Lane 2 :** GPI knockout HEK293T cell lysate

**Lane 3 :** HepG2 cell lysate

**Lane 4 :** HeLa cell lysate

Lysates/proteins at 20 µg per lane.

### Secondary

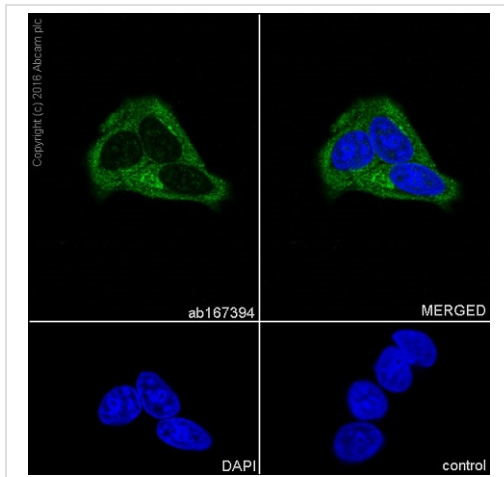
**All lanes :** Goat anti-Rabbit IgG H&L (IRDye® 800CW) preadsorbed ([ab216773](#)) at 1/10000 dilution

**Predicted band size:** 63 kDa

**Observed band size:** 63 kDa

**Lanes 1-4:** Merged signal (red and green). Green - ab167394 observed at 63 kDa. Red - loading control [ab8245](#) observed at 36 kDa.

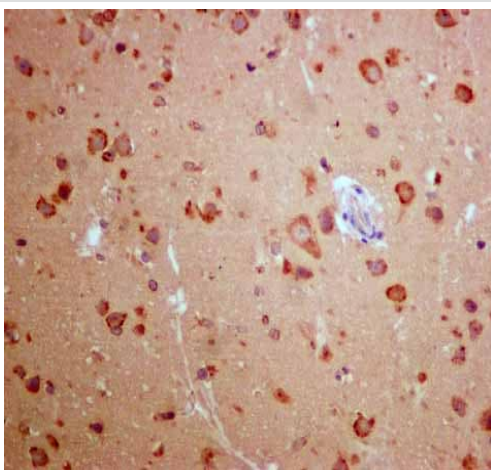
ab167394 Anti-AMF antibody [EPR11663(B)] was shown to specifically react with AMF in wild-type HEK293T cells. Loss of signal was observed when knockout cell line [ab266834](#) (knockout cell lysate [ab257458](#)) was used. Wild-type and AMF knockout samples were subjected to SDS-PAGE. ab167394 and Anti-GAPDH antibody [6C5] - Loading Control ([ab8245](#)) were incubated at room temperature for 2.5 hours at 1 in 1000 dilution and 1 in 20000 dilution respectively. Blots were developed with Goat anti-Rabbit IgG H&L (IRDye® 800CW) preadsorbed ([ab216773](#)) and Goat anti-Mouse IgG H&L (IRDye® 680RD) preadsorbed ([ab216776](#)) secondary antibodies at 1 in 20000 dilution for 1 hour at room temperature before imaging.



Immunocytochemistry/ Immunofluorescence - Anti-AMF antibody [EPR11663(B)] (ab167394)

Immunocytochemistry/Immunofluorescence analysis of MCF-7 (human breast carcinoma) labelling AFM with purified ab167394 at 1/500. Cells were fixed with 100% methanol. An Alexa Fluor<sup>®</sup> 488-conjugated goat anti-rabbit IgG (1/1000) was used as the secondary antibody (Ab150077). Nuclei counterstained with DAPI (blue).

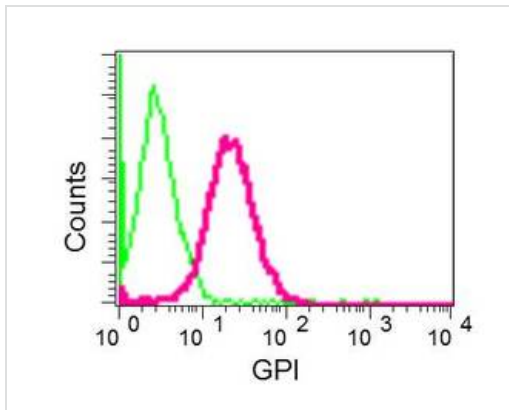
Control: PBS only



Immunohistochemistry (Formalin/PFA-fixed paraffin-embedded sections) - Anti-AMF antibody [EPR11663(B)] (ab167394)

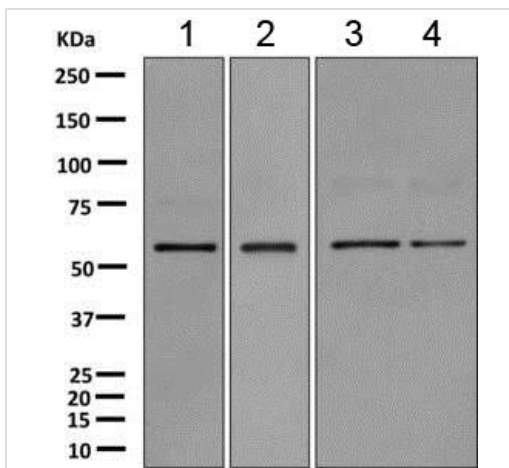
ab167394 showing +ve staining in Human normal brain.

Perform heat mediated antigen retrieval with citrate buffer pH 6 before commencing with IHC staining protocol.



Intracellular flow cytometric analysis of permeabilized A549 cells, labeling AFM with ab167394 at 1/10 dilution.

Flow Cytometry (Intracellular) - Anti-AMF antibody [EPR11663(B)] (ab167394)



**All lanes** : Anti-AMF antibody [EPR11663(B)] (ab167394) at 1/1000 dilution

**Lane 1** : HepG2 cell lysate

**Lane 2** : HeLa cell lysate

**Lane 3** : HT29 cell lysate

**Lane 4** : A549 cell lysate

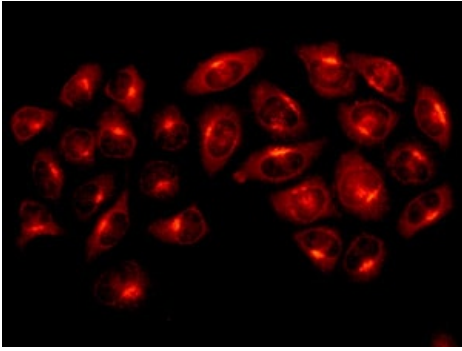
Lysates/proteins at 10 µg per lane.

#### Secondary

**All lanes** : Goat anti-rabbit HRP at 1/2000 dilution

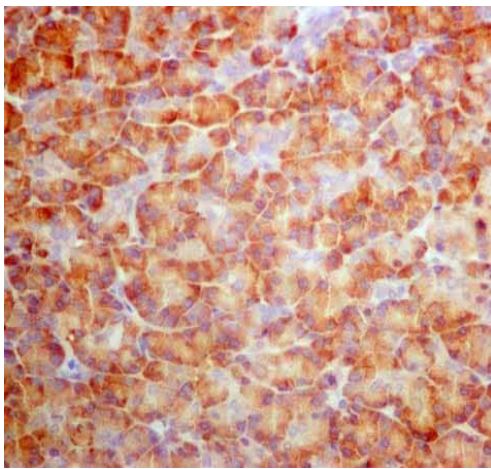
**Predicted band size:** 63 kDa

Western blot - Anti-AMF antibody [EPR11663(B)] (ab167394)



Immunocytochemistry/ Immunofluorescence - Anti-AMF antibody [EPR11663(B)] (ab167394)

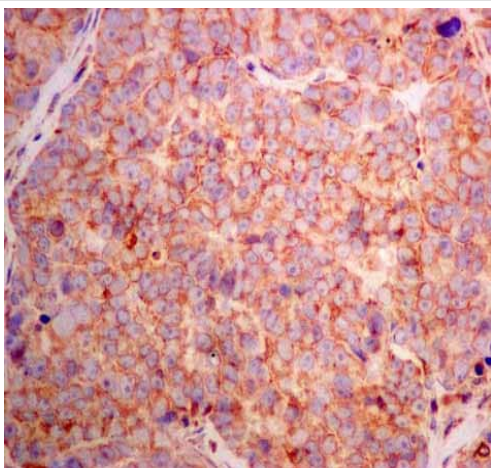
Immunofluorescent analysis of HepG2 cells labeling AMF with ab167394 at 1/100 dilution.



Immunohistochemistry (Formalin/PFA-fixed paraffin-embedded sections) - Anti-AMF antibody [EPR11663(B)] (ab167394)

ab167394 showing +ve staining in Human normal pancreas.

Perform heat mediated antigen retrieval with citrate buffer pH 6 before commencing with IHC staining protocol.

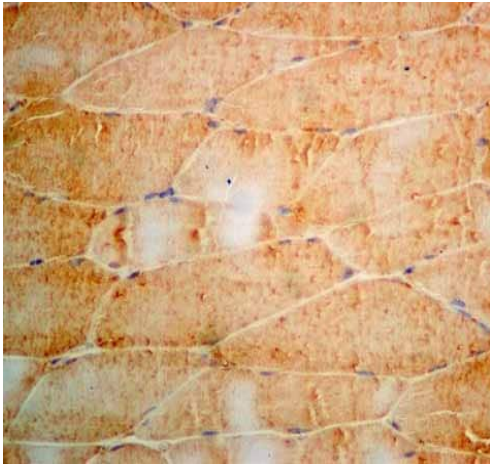


Immunohistochemistry (Formalin/PFA-fixed paraffin-embedded sections) - Anti-AMF antibody [EPR11663(B)] (ab167394)

ab167394 showing +ve staining in Human ovarian carcinoma.

Perform heat mediated antigen retrieval with citrate buffer pH 6 before commencing with IHC staining protocol.

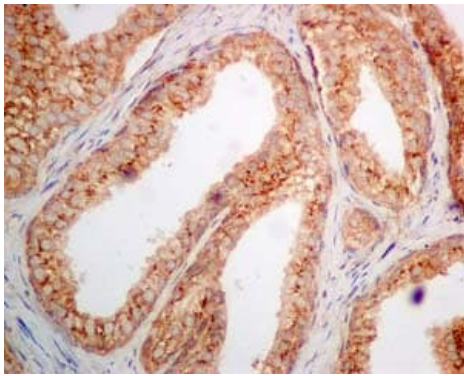




Immunohistochemistry (Formalin/PFA-fixed paraffin-embedded sections) - Anti-AMF antibody [EPR11663(B)] (ab167394)

ab167394 showing +ve staining in Human skeletal muscle.

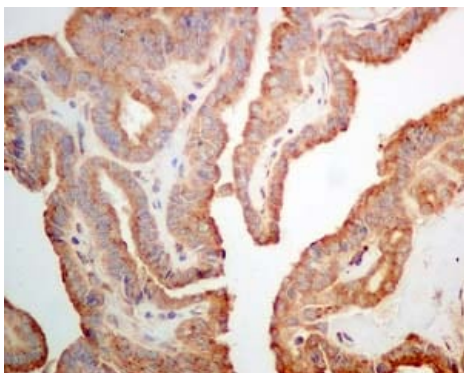
Perform heat mediated antigen retrieval with citrate buffer pH 6 before commencing with IHC staining protocol.



Immunohistochemistry (Formalin/PFA-fixed paraffin-embedded sections) - Anti-AMF antibody [EPR11663(B)] (ab167394)

Immunohistochemical analysis of paraffin-embedded Human prostatic hyperplasia tissue, labeling AFM with ab167394 at 1/100 dilution.

Perform heat mediated antigen retrieval with citrate buffer pH 6 before commencing with IHC staining protocol.



Immunohistochemistry (Formalin/PFA-fixed paraffin-embedded sections) - Anti-AMF antibody [EPR11663(B)] (ab167394)

Immunohistochemical analysis of paraffin-embedded Human thyroid carcinoma tissue labeling AFM with ab167394 at 1/100 dilution.

Perform heat mediated antigen retrieval with citrate buffer pH 6 before commencing with IHC staining protocol.

### Why choose a recombinant antibody?



**Research with confidence**  
Consistent and reproducible results



**Long-term and scalable supply**  
Recombinant technology



**Success from the first experiment**  
Confirmed specificity



**Ethical standards compliant**  
Animal-free production

Anti-AMF antibody [EPR11663(B)] (ab167394)

**Please note:** All products are "FOR RESEARCH USE ONLY. NOT FOR USE IN DIAGNOSTIC PROCEDURES"

### Our Abpromise to you: Quality guaranteed and expert technical support

---

- Replacement or refund for products not performing as stated on the datasheet
- Valid for 12 months from date of delivery
- Response to your inquiry within 24 hours
- We provide support in Chinese, English, French, German, Japanese and Spanish
- Extensive multi-media technical resources to help you
- We investigate all quality concerns to ensure our products perform to the highest standards

If the product does not perform as described on this datasheet, we will offer a refund or replacement. For full details of the Abpromise, please visit <https://www.abcam.co.jp/abpromise> or contact our technical team.

### Terms and conditions

---

- Guarantee only valid for products bought direct from Abcam or one of our authorized distributors