

Anti-ALX3 antibody ab64985

★★★★★ [1 Abreviews](#) [4 References](#) [画像数 2](#)

製品の概要

製品名	Anti-ALX3 antibody
製品の詳細	Rabbit polyclonal to ALX3
由来種	Rabbit
アプリケーション	適用あり: WB, ICC/IF
種交差性	交差種: Human 交差が予測される動物種: Mouse, Rat 
免疫原	Synthetic peptide corresponding to Human ALX3 aa 150-250 (internal sequence). Database link: O95076
ポジティブ・コントロール	293 cell extract and HeLa cells
特記事項	<p>The Life Science industry has been in the grips of a reproducibility crisis for a number of years. Abcam is leading the way in addressing this with our range of recombinant monoclonal antibodies and knockout edited cell lines for gold-standard validation. Please check that this product meets your needs before purchasing.</p> <p>If you have any questions, special requirements or concerns, please send us an inquiry and/or contact our Support team ahead of purchase. Recommended alternatives for this product can be found below, along with publications, customer reviews and Q&As</p>

製品の特性

製品の状態	Liquid
保存方法	Shipped at 4°C. Store at -20°C. Stable for 12 months at -20°C.
バッファー	pH: 7.40 Preservative: 0.02% Sodium azide Constituents: PBS, 50% Glycerol (glycerin, glycerine), 0.87% Sodium chloride
精製度	Without Mg ²⁺ and Ca ²⁺
ポリ/モノ	Immunogen affinity purified
アイソタイプ	ポリクローナル
	IgG

アプリケーション

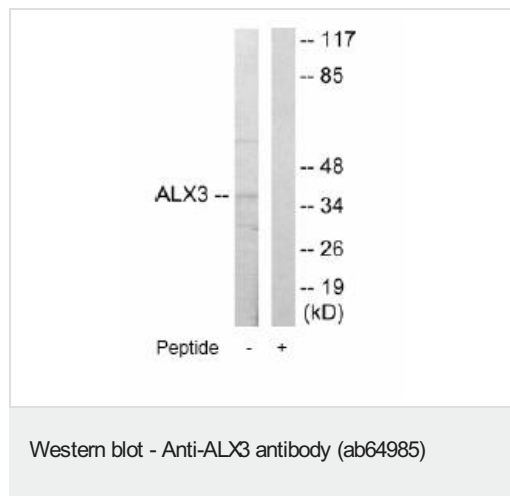
The Abpromise guarantee **Abpromise保証は、** 次のテスト済みアプリケーションにおけるab64985の使用に適用されます
アプリケーションノートには、推奨の開始希釈率がありますが、適切な希釈率につきましてはご検討ください。

アプリケーション	Abreviews	特記事項
WB		1/500 - 1/1000. Detects a band of approximately 37 kDa (predicted molecular weight: 37 kDa).
ICC/IF		1/500 - 1/1000.

ターゲット情報

関連性	ALX3 (aristaless-like homeobox 3) is a nuclear protein with a homeobox DNA-binding domain. It functions as a transcriptional regulator with a possible role in patterning of the mesoderm during development. Preferential methylation of the ALX3 promoter is associated with advanced-stage neuroblastoma tumors.
細胞内局在	Nuclear

画像



All lanes : Anti-ALX3 antibody (ab64985) at 1/500 dilution

Lane 1 : 293 cell extract

Lane 2 : 293 cell extract with immunising peptide at 10 µg

Lysates/proteins at 30 µg per lane.

Predicted band size: 37 kDa

Observed band size: 37 kDa

Additional bands at: 60 kDa. We are unsure as to the identity of these extra bands.



Immunofluorescence analysis of HeLa cells, using ab64985 at 1/500-1/1000 dilution. Right hand panel was also treated with immunising peptide.

Please note: All products are "FOR RESEARCH USE ONLY. NOT FOR USE IN DIAGNOSTIC PROCEDURES"

Our Abpromise to you: Quality guaranteed and expert technical support

- Replacement or refund for products not performing as stated on the datasheet
- Valid for 12 months from date of delivery
- Response to your inquiry within 24 hours
- We provide support in Chinese, English, French, German, Japanese and Spanish
- Extensive multi-media technical resources to help you
- We investigate all quality concerns to ensure our products perform to the highest standards

If the product does not perform as described on this datasheet, we will offer a refund or replacement. For full details of the Abpromise, please visit <https://www.abcam.co.jp/abpromise> or contact our technical team.

Terms and conditions

- Guarantee only valid for products bought direct from Abcam or one of our authorized distributors