

Anti-alpha Tubulin antibody - Microtubule Marker ab15246

★★★★★ **18 Abreviews** **254 References** 画像数 3

製品の概要

製品名	Anti-alpha Tubulin antibody - Microtubule Marker
製品の詳細	Rabbit polyclonal to alpha Tubulin - Microtubule Marker
由来種	Rabbit
特異性	Homology to both Tubulin alpha-3E chain and Tubulin alpha-4A chain
アプリケーション	適用あり: WB, IHC-P
種交差性	交差種: Human 交差が予測される動物種: Mouse, Rat, Sheep, Rabbit, Chicken, Guinea pig, Cow, Pig, Xenopus laevis, Drosophila melanogaster, Zebrafish, Gerbil, Newt 
免疫原	Synthetic peptide within Human alpha Tubulin aa 400 to the C-terminus. The exact sequence is proprietary. Database link: Q6PEY2
特記事項	<p>This product is FOR RESEARCH USE ONLY. For commercial use, please contact partnerships@abcam.com.</p> <p>The Life Science industry has been in the grips of a reproducibility crisis for a number of years. Abcam is leading the way in addressing this with our range of recombinant monoclonal antibodies and knockout edited cell lines for gold-standard validation. Please check that this product meets your needs before purchasing.</p> <p>If you have any questions, special requirements or concerns, please send us an inquiry and/or contact our Support team ahead of purchase. Recommended alternatives for this product can be found below, along with publications, customer reviews and Q&As</p>

製品の特性

製品の状態	Liquid
保存方法	Shipped at 4°C. Upon delivery aliquot and store at -20°C. Avoid freeze / thaw cycles.
バッファー	pH: 7.60 Preservative: 0.1% Sodium azide Constituents: PBS, 1% BSA
精製度	Immunogen affinity purified
ポリ/モノ	ポリクローナル

アプリケーション

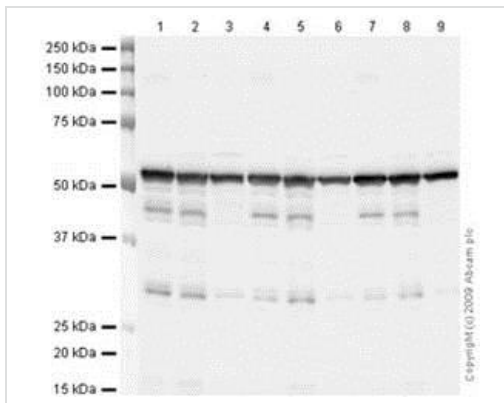
The Abpromise guarantee **Abpromise保証は、**次のテスト済みアプリケーションにおけるab15246の使用に適用されます
アプリケーションノートには、推奨の開始希釈率がありますが、適切な希釈率につきましてはご検討ください。

アプリケーション	Abreviews	特記事項
WB	★★★★★ (14)	Use at an assay dependent concentration. Detects a band of approximately 55 kDa (predicted molecular weight: 50 kDa).
IHC-P	★★★★★ (1)	1/100. Perform heat mediated antigen retrieval before commencing with IHC staining protocol.

ターゲット情報

機能	Tubulin is the major constituent of microtubules. It binds two moles of GTP, one at an exchangeable site on the beta chain and one at a non-exchangeable site on the alpha chain.
配列類似性	Belongs to the tubulin family.
翻訳後修飾	<p>Some glutamate residues at the C-terminus are polyglutamylated. This modification occurs exclusively on glutamate residues and results in polyglutamate chains on the gamma-carboxyl group. Also monoglycylated but not polyglycylated due to the absence of functional TTL10 in human. Monoglycylation is mainly limited to tubulin incorporated into axonemes (cilia and flagella) whereas glutamylation is prevalent in neuronal cells, centrioles, axonemes, and the mitotic spindle. Both modifications can coexist on the same protein on adjacent residues, and lowering glycylation levels increases polyglutamylated, and reciprocally. The precise function of such modifications is still unclear but they regulate the assembly and dynamics of axonemal microtubules.</p> <p>Acetylation of alpha chains at Lys-40 stabilizes microtubules and affects affinity and processivity of microtubule motors. This modification has a role in multiple cellular functions, ranging from cell motility, cell cycle progression or cell differentiation to intracellular trafficking and signaling.</p>
細胞内局在	Cytoplasm > cytoskeleton.

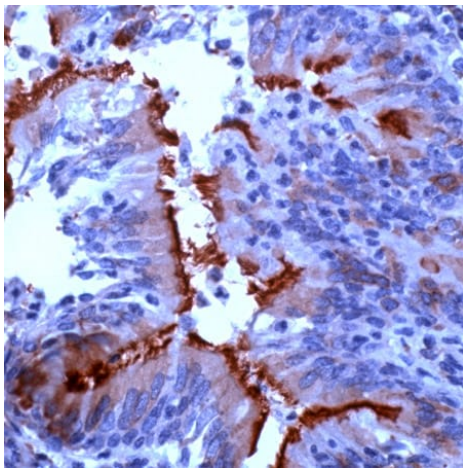
画像



Western blot - Anti-alpha Tubulin antibody -
Microtubule Marker (ab15246)

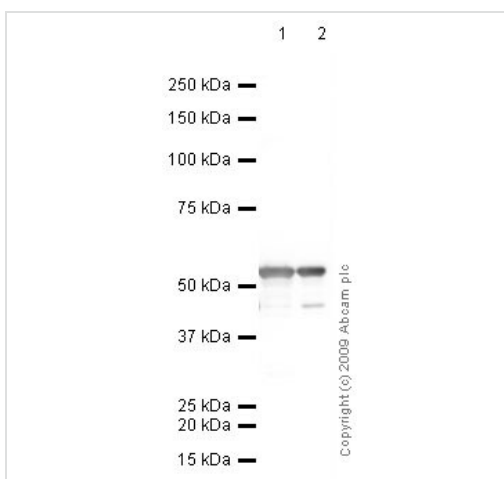
Lanes: 1, 4, 7 - SK N BE; 2, 5, 8 - TE 671; 3, 6, 9 - HeLa

Lanes: 1-3: 4°C (1 freeze/thaw); 4-6: 4°C (2 freeze/thaws); 7-9 : 4°C (4 freeze/thaws)



Immunohistochemistry (Formalin/PFA-fixed paraffin-
embedded sections) - Anti-alpha Tubulin antibody -
Microtubule Marker (ab15246)

ab15246 at 1/200 dilution, staining alpha Tubulin in Human lung
tissue section by Immunohistochemistry (Formalin/ PFA fixed
paraffin- embedded tissue sections).



Western blot - Anti-alpha Tubulin antibody -
Microtubule Marker (ab15246)

All lanes : Anti-alpha Tubulin antibody - Microtubule Marker
(ab15246) at 1 µg/ml

Lane 1 : SK N BE (Human neuroblastoma) Whole Cell Lysate

Lane 2 : TE 671 (Human Rhabdomyosarcoma) Whole Cell Lysate

Lysates/proteins at 10 µg per lane.

Secondary

All lanes : Goat polyclonal to Rabbit IgG - H&L - Pre-Adsorbed
(HRP) at 1/3000 dilution

Predicted band size: 50 kDa

Observed band size: 55 kDa

Please note: All products are "FOR RESEARCH USE ONLY. NOT FOR USE IN DIAGNOSTIC PROCEDURES"

Our Abpromise to you: Quality guaranteed and expert technical support

- Replacement or refund for products not performing as stated on the datasheet
- Valid for 12 months from date of delivery
- Response to your inquiry within 24 hours

- We provide support in Chinese, English, French, German, Japanese and Spanish
- Extensive multi-media technical resources to help you
- We investigate all quality concerns to ensure our products perform to the highest standards

If the product does not perform as described on this datasheet, we will offer a refund or replacement. For full details of the Abpromise, please visit <https://www.abcam.co.jp/abpromise> or contact our technical team.

Terms and conditions

- Guarantee only valid for products bought direct from Abcam or one of our authorized distributors