


Anti-alpha Tubulin antibody [B-5-1-2] ab11304

★★★★★ [5 Abreviews](#) [47 References](#) [画像数 2](#)

製品の概要

製品名	Anti-alpha Tubulin antibody [B-5-1-2]
製品の詳細	Mouse monoclonal [B-5-1-2] to alpha Tubulin
由来種	Mouse
アプリケーション	適用あり: ICC
種交差性	交差種: Human 交差が予測される動物種: Dog, Pig, Xenopus laevis, Cynomolgus monkey, African green monkey, Xenopus tropicalis 
免疫原	Full length native protein (purified) corresponding to alpha Tubulin. Sarkosyl-resistant filaments from Strongylocentrotus purpuratus (sea urchin) sperm axonemes.
エピトープ	The antibody recognizes an epitope located at the C-terminal end of the alpha tubulin isoform.
ポジティブ・コントロール	293T whole cell lysate (ab95494) can be used as a positive control in WB. Total cell extract of the Human foreskin fibroblast cell line (FS11).
特記事項	Storage in frost-free freezers is also not recommended. If slight turbidity occurs upon prolonged storage, clarify the solution by centrifugation before use. The Life Science industry has been in the grips of a reproducibility crisis for a number of years. Abcam is leading the way in addressing this with our range of recombinant monoclonal antibodies and knockout edited cell lines for gold-standard validation. Please check that this product meets your needs before purchasing. If you have any questions, special requirements or concerns, please send us an inquiry and/or contact our Support team ahead of purchase. Recommended alternatives for this product can be found below, along with publications, customer reviews and Q&As

製品の特性

製品の状態	Liquid
保存方法	Shipped at 4°C. Upon delivery aliquot and store at -20°C or -80°C. Avoid repeated freeze / thaw cycles.
バッファー	pH: 7.40 Preservative: 0.097% Sodium azide Constituent: 0.0268% PBS
精製度	Protein A purified

ポリ/モノ	モノクローナル
クローン名	B-5-1-2
アイソタイプ	IgG1

アプリケーション

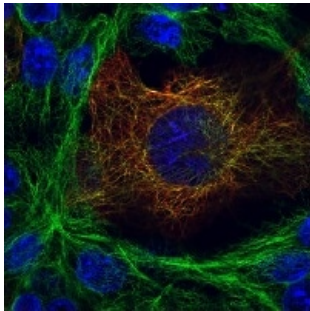
The Abpromise guarantee **Abpromise保証は、**次のテスト済みアプリケーションにおけるab11304の使用に適用されます
アプリケーションノートには、推奨の開始希釈率がありますが、適切な希釈率につきましてはご検討ください。

アプリケーション	Abreviews	特記事項
ICC		Use at an assay dependent concentration.

ターゲット情報

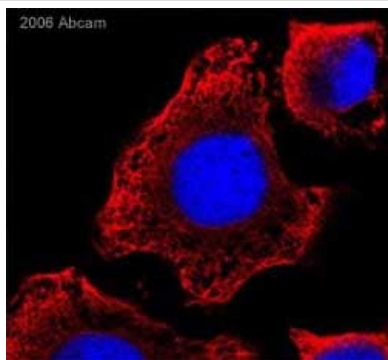
機能	Tubulin is the major constituent of microtubules. It binds two moles of GTP, one at an exchangeable site on the beta chain and one at a non-exchangeable site on the alpha chain.
配列類似性	Belongs to the tubulin family.
翻訳後修飾	Some glutamate residues at the C-terminus are polyglutamylated. This modification occurs exclusively on glutamate residues and results in polyglutamate chains on the gamma-carboxyl group. Also monoglycylated but not polyglycylated due to the absence of functional TTL10 in human. Monoglycylation is mainly limited to tubulin incorporated into axonemes (cilia and flagella) whereas glutamylation is prevalent in neuronal cells, centrioles, axonemes, and the mitotic spindle. Both modifications can coexist on the same protein on adjacent residues, and lowering glycylation levels increases polyglutamylated, and reciprocally. The precise function of such modifications is still unclear but they regulate the assembly and dynamics of axonemal microtubules. Acetylation of alpha chains at Lys-40 stabilizes microtubules and affects affinity and processivity of microtubule motors. This modification has a role in multiple cellular functions, ranging from cell motility, cell cycle progression or cell differentiation to intracellular trafficking and signaling.
細胞内局在	Cytoplasm > cytoskeleton.

画像



Immunocytochemistry - Anti-alpha Tubulin antibody
[B-5-1-2] (ab11304)

ab11304 staining alpha Tubulin in the HEK293T cell line by ICC/IF (Immunocytochemistry/immunofluorescence) transfected with a recombinant protein HA tagged dual stained with Anti-HA Mouse primary antibody and Anti-Mouse Alexa Fluor®543 secondary antibody. Microtubules detected with Anti- α -tubulin Mouse primary antibody and Anti-Mouse Alexa Fluor®488 secondary antibody. Nucleus visualised with DAPI.



Immunocytochemistry - Anti-alpha Tubulin antibody
[B-5-1-2] (ab11304)

This image is courtesy of an Anonymous Abreview

ab11304 at a 1/100 dilution staining human HeLa cells by Immunocytochemistry/Immunofluorescence. The cells were methanol fixed and blocked for 1 hour with 10% serum. The antibody was then incubated with the cells for 1 hour. Bound antibody was detected using a Goat anti-mouse TRITC antibody.

Please note: All products are "FOR RESEARCH USE ONLY. NOT FOR USE IN DIAGNOSTIC PROCEDURES"

Our Abpromise to you: Quality guaranteed and expert technical support

- Replacement or refund for products not performing as stated on the datasheet
- Valid for 12 months from date of delivery
- Response to your inquiry within 24 hours
- We provide support in Chinese, English, French, German, Japanese and Spanish
- Extensive multi-media technical resources to help you
- We investigate all quality concerns to ensure our products perform to the highest standards

If the product does not perform as described on this datasheet, we will offer a refund or replacement. For full details of the Abpromise, please visit <https://www.abcam.co.jp/abpromise> or contact our technical team.

Terms and conditions

- Guarantee only valid for products bought direct from Abcam or one of our authorized distributors