

Anti-Alpha-synuclein (phospho S129) antibody [MJF-R13 (8-8)] ab168381

リコンビナント **RabMAb**

★★★★★ **5 Abreviews** **39 References** **画像数 4**

製品の概要

製品名	Anti-Alpha-synuclein (phospho S129) antibody [MJF-R13 (8-8)]
製品の詳細	Rabbit monoclonal [MJF-R13 (8-8)] to Alpha-synuclein (phospho S129)
由来種	Rabbit
特異性	This antibody only detects alpha Synuclein phosphorylated on Ser129.
アプリケーション	適用あり: WB 適用なし: Flow Cyt, ICC/IF, IHC-P or IP
種交差性	交差種: Human
免疫原	Synthetic peptide within Human Alpha-synuclein (phospho S129). The exact sequence is proprietary. Database link: P37840
ポジティブ・コントロール	Recombinant alpha-synuclein, expressed in BL21 bacterial cells in the presence of Human Polo-Like Kinase 2; HEK whole cell lysates, stably-transfected with Polo-Like Kinase 2 and alpha Synuclein.
特記事項	<p>Alpha-synuclein was the first gene to be linked to Parkinson's disease (PD) and remains the most promising link to PD pathogenesis, where there is genetic evidence that it may play a causal role. In the brain, alpha-synuclein is concentrated in presynaptic nerve terminals. The deposition of the abundant presynaptic brain protein alpha-synuclein as fibrillary aggregates in neurons or glial cells is a hallmark lesion in a subset of neurodegenerative disorders. These disorders include Parkinson's disease (PD), dementia with Lewy bodies (DLB) and multiple system atrophy, collectively referred to as synucleinopathies. Parkinson's disease (PD) is a common neurodegenerative disorder characterized by the progressive accumulation in selected neurons of protein inclusions containing alpha-synuclein and ubiquitin.</p> <p>Recent studies also indicate that alpha-synuclein undergoes post-translational modification. Though the role of many of these modifications is still under investigation, phosphorylation at Serine 129 may affect alpha-synuclein aggregations and may also serve as marker of disease pathogenesis. With the advent of this phospho-specific Serine 129 antibody, The Michael J. Fox Foundation hopes to ensure that the putative role of this modification can be further examined by all researchers.</p> <p>This product is a recombinant monoclonal antibody, which offers several advantages including:</p> <ul style="list-style-type: none">- High batch-to-batch consistency and reproducibility

- Improved sensitivity and specificity
- Long-term security of supply
- Animal-free production

For more information [see here](#).

Our RabMAb[®] technology is a patented hybridoma-based technology for making rabbit monoclonal antibodies. For details on our patents, please refer to [RabMAb[®] patents](#).

This antibody was developed with support from The Michael J. Fox Foundation.



製品の特性

製品の状態	Liquid
保存方法	Shipped at 4°C. Store at +4°C short term (1-2 weeks). Upon delivery aliquot. Store at -20°C long term. Avoid freeze / thaw cycle.
バッファー	Preservative: 0.01% Sodium azide Constituents: 59% PBS, 40% Glycerol, 0.05% BSA
精製度	Protein A purified
ポリ/モノ	モノクローナル
クローン名	MJF-R13 (8-8)
アイソタイプ	IgG

アプリケーション

The Abpromise guarantee **Abpromise保証は、次のテスト済みアプリケーションにおけるab168381の使用に適用されます**
アプリケーションノートには、推奨の開始希釈率がありますが、適切な希釈率につきましてはご検討ください。

アプリケーション	Abreviews	特記事項
WB	★★★★★ (3)	1/1000. Predicted molecular weight: 14 kDa.

追加情報 Is unsuitable for Flow Cyt, ICC/IF, IHC-P or IP.

ターゲット情報

機能	May be involved in the regulation of dopamine release and transport. Induces fibrillization of microtubule-associated protein tau. Reduces neuronal responsiveness to various apoptotic stimuli, leading to a decreased caspase-3 activation.
組織特異性	Expressed principally in brain but is also expressed in low concentrations in all tissues examined except in liver. Concentrated in presynaptic nerve terminals.
関連疾患	Genetic alterations of SNCA resulting in aberrant polymerization into fibrils, are associated with several neurodegenerative diseases (synucleinopathies). SNCA fibrillar aggregates represent the major non A-beta component of Alzheimer disease amyloid plaque, and a major component of Lewy body inclusions. They are also found within Lewy body (LB)-like intraneuronal inclusions,

glial inclusions and axonal spheroids in neurodegeneration with brain iron accumulation type 1.
Parkinson disease 1
Parkinson disease 4
Dementia Lewy body

配列類似性

Belongs to the synuclein family.

ドメイン

The 'non A-beta component of Alzheimer disease amyloid plaque' domain (NAC domain) is involved in fibrils formation. The middle hydrophobic region forms the core of the filaments. The C-terminus may regulate aggregation and determine the diameter of the filaments.

翻訳後修飾

Phosphorylated, predominantly on serine residues. Phosphorylation by CK1 appears to occur on residues distinct from the residue phosphorylated by other kinases. Phosphorylation of Ser-129 is selective and extensive in synucleinopathy lesions. In vitro, phosphorylation at Ser-129 promoted insoluble fibril formation. Phosphorylated on Tyr-125 by a PTK2B-dependent pathway upon osmotic stress.

Hallmark lesions of neurodegenerative synucleinopathies contain alpha-synuclein that is modified by nitration of tyrosine residues and possibly by dityrosine cross-linking to generated stable oligomers.

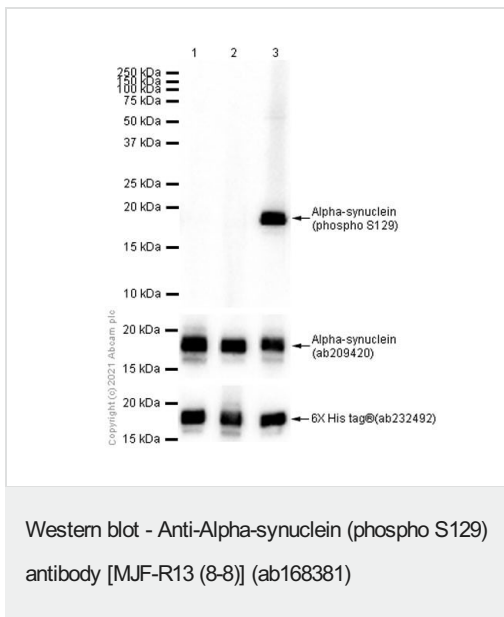
Ubiquitinated. The predominant conjugate is the diubiquitinated form.

Acetylation at Met-1 seems to be important for proper folding and native oligomeric structure.

細胞内局在

Cytoplasm, cytosol. Membrane. Nucleus. Cell junction, synapse. Secreted. Membrane-bound in dopaminergic neurons.

画像



All lanes : Anti-Alpha-synuclein (phospho S129) antibody [MJF-R13 (8-8)] (ab168381)

Lane 1 : In vitro kinase assay of Alpha Synuclein phosphorylation using His tagged human full length recombinant alpha-synuclein protein in the presence of PLK2 (Polo-like kinase 2) but absence of ATP

Lane 2 : In vitro kinase assay of Alpha Synuclein phosphorylation using His tagged human full length recombinant alpha-synuclein protein in the presence of ATP but absence of PLK2 (Polo-like kinase 2)

Lane 3 : In vitro kinase assay of Alpha Synuclein phosphorylation using His tagged human full length recombinant alpha-synuclein protein in the presence of PLK2 (Polo-like kinase 2) and ATP

Secondary

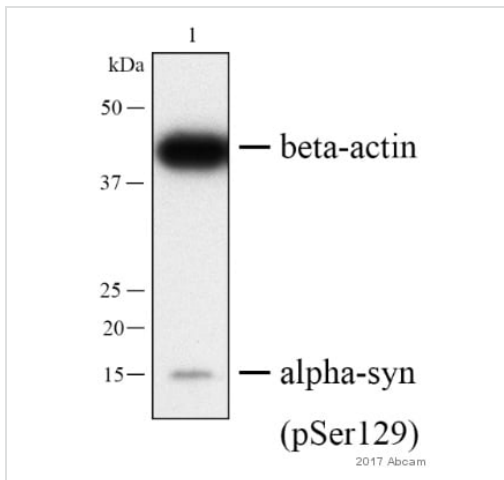
All lanes : Goat Anti-Rabbit IgG H&L (HRP) ([ab97051](#)) at 1/20000 dilution

Predicted band size: 14 kDa

Observed band size: 17 kDa

Blocking and Diluting buffer and concentration - 5% NFDM/TBST

Exposure time: 5 seconds



Western blot - Anti-Alpha-synuclein (phospho S129) antibody [MJF-R13 (8-8)] (ab168381)

Image courtesy of Mr. Chun Chau SUNG

Anti-Alpha-synuclein (phospho S129) antibody [MJF-R13 (8-8)] (ab168381) at 1/2000 dilution + Mouse cortical neuron lysate at 30 μ g

Secondary

Goat anti-rabbit IgG (H+L) HRP

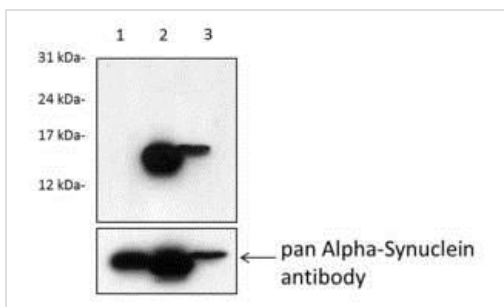
Developed using the ECL technique.

Predicted band size: 14 kDa

Exposure time: 5 minutes

Lysate prepared in PBS + 1% Triton X-100. Membrane fixed with 0.4% PFA in PBS for 30 min prior to blocking.

Primary incubation for 12 hours at 4°C.



Western blot - Anti-Alpha-synuclein (phospho S129) antibody [MJF-R13 (8-8)] (ab168381)

This image is courtesy of Drs. Shyra Gardai and Jennifer Johnston (Elan Pharmaceuticals)

All lanes : Anti-Alpha-synuclein (phospho S129) antibody [MJF-R13 (8-8)] (ab168381) at 1/1000 dilution

Lane 1 : Recombinant alpha Synuclein expressed in BL21 bacterial cells

Lane 2 : Recombinant alpha Synuclein expressed in BL21 bacterial cells, in the presence of Human Polo-Like Kinase 2

Lane 3 : HEK whole cell lysates, stably-transfected with Polo-Like Kinase 2 and alpha Synuclein

Predicted band size: 14 kDa

Why choose a recombinant antibody?



Research with confidence
Consistent and reproducible results



Long-term and scalable supply
Recombinant technology



Success from the first experiment
Confirmed specificity



Ethical standards compliant
Animal-free production

Anti-Alpha-synuclein (phospho S129) antibody [MJF-R13 (8-8)] (ab168381)

Please note: All products are "FOR RESEARCH USE ONLY. NOT FOR USE IN DIAGNOSTIC PROCEDURES"

Our Abpromise to you: Quality guaranteed and expert technical support

- Replacement or refund for products not performing as stated on the datasheet
- Valid for 12 months from date of delivery
- Response to your inquiry within 24 hours
- We provide support in Chinese, English, French, German, Japanese and Spanish
- Extensive multi-media technical resources to help you
- We investigate all quality concerns to ensure our products perform to the highest standards

If the product does not perform as described on this datasheet, we will offer a refund or replacement. For full details of the Abpromise, please visit <https://www.abcam.co.jp/abpromise> or contact our technical team.

Terms and conditions

- Guarantee only valid for products bought direct from Abcam or one of our authorized distributors