

Anti-Alpha Skeletal Muscle Actin antibody [Alpha Sr-1] ab28052

★★★★★ **5 Abreviews** **46 References** 画像数 4

製品の概要

| | |
|--------------|---|
| 製品名 | Anti-Alpha Skeletal Muscle Actin antibody [Alpha Sr-1] |
| 製品の詳細 | Mouse monoclonal [Alpha Sr-1] to Alpha Skeletal Muscle Actin |
| 由来種 | Mouse |
| 特異性 | In Western blotting of pure rabbit striated muscle actin or of total extracts from different tissues, e.g. rat striated muscle, rat myocardium, rat aortic media, human fibroblasts and pure chicken gizzard actin, ab28052 labels alpha-skeletal (alpha-sarcomeric) and alpha-cardiac muscle actins. No labelling is observed with actin from fibroblasts (alpha-smooth muscle and beta-cytoplasmic actin), aorta (alpha-smooth muscle actin), or chicken gizzard (gamma-smooth muscle actin). |
| アプリケーション | 適用あり: WB, ICC |
| 種交差性 | 交差種: Rat, Human |
| 免疫原 | Purified striated muscle actin from rabbit. |
| ポジティブ・コントロール | WB: Whole extract of Rat heart ICC: HeLa cells |
| 特記事項 | <p>The Life Science industry has been in the grips of a reproducibility crisis for a number of years. Abcam is leading the way in addressing this with our range of recombinant monoclonal antibodies and knockout edited cell lines for gold-standard validation. Please check that this product meets your needs before purchasing.</p> <p>If you have any questions, special requirements or concerns, please send us an inquiry and/or contact our Support team ahead of purchase. Recommended alternatives for this product can be found below, along with publications, customer reviews and Q&As</p> |

製品の特性

| | |
|-------|---|
| 製品の状態 | Liquid |
| 保存方法 | Shipped at 4°C. Store at +4°C short term (1-2 weeks). Store at -20°C or -80°C. Avoid freeze / thaw cycle. |
| バッファー | pH: 7.20 Preservative: 0.097% Sodium azide Constituent: 0.79% Tris HCl |
| 精製度 | Tissue culture supernatant |
| ポリ/モノ | モノクローナル |
| クローン名 | Alpha Sr-1 |

アプリケーション

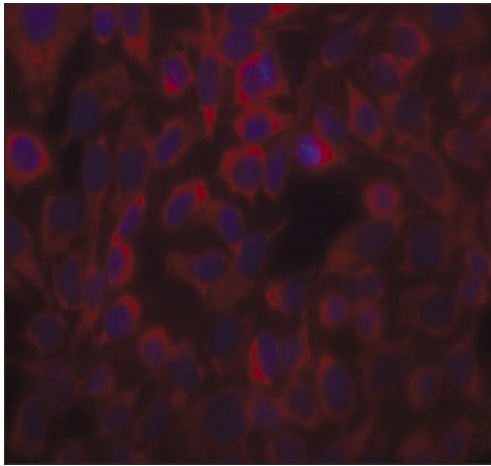
The Abpromise guarantee Abpromise保証は、次のテスト済みアプリケーションにおけるab28052の使用に適用されます
アプリケーションノートには、推奨の開始希釈率がありますが、適切な希釈率につきましてはご検討ください。

| アプリケーション | Abreviews | 特記事項 |
|----------|-----------|--|
| WB | ★★★★★ (1) | Use at an assay dependent concentration. Predicted molecular weight: 42 kDa. |
| ICC | | Use at an assay dependent concentration. |

ターゲット情報

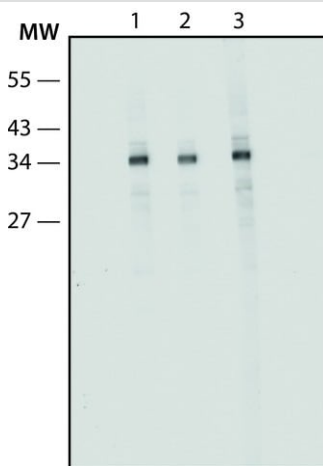
| | |
|-------|--|
| 機能 | Actins are highly conserved proteins that are involved in various types of cell motility and are ubiquitously expressed in all eukaryotic cells. |
| 関連疾患 | <p>Defects in ACTA1 are the cause of nemaline myopathy type 3 (NEM3) [MIM:161800]. A form of nemaline myopathy. Nemaline myopathies are muscular disorders characterized by muscle weakness of varying severity and onset, and abnormal thread-or rod-like structures in muscle fibers on histologic examination. The phenotype at histological level is variable. Some patients present areas devoid of oxidative activity containing (cores) within myofibers. Core lesions are unstructured and poorly circumscribed.</p> <p>Defects in ACTA1 are a cause of myopathy congenital with excess of thin myofilaments (MPCETM) [MIM:161800]. A congenital muscular disorder characterized at histological level by areas of sarcoplasm devoid of normal myofibrils and mitochondria, and replaced with dense masses of thin filaments. Central cores, rods, ragged red fibers, and necrosis are absent.</p> <p>Defects in ACTA1 are a cause of congenital myopathy with fiber-type disproportion (CFTD) [MIM:255310]; also known as congenital fiber-type disproportion myopathy (CFTDM). CFTD is a genetically heterogeneous disorder in which there is relative hypotrophy of type 1 muscle fibers compared to type 2 fibers on skeletal muscle biopsy. However, these findings are not specific and can be found in many different myopathic and neuropathic conditions.</p> |
| 配列類似性 | Belongs to the actin family. |
| 細胞内局在 | Cytoplasm > cytoskeleton. |

画像



Immunocytochemistry - Anti-Alpha Skeletal Muscle Actin antibody [Alpha Sr-1] (ab28052)

Immunocytochemistry analysis of HeLa cells labeling Alpha Skeletal Muscle Actin with ab28052 at 1/1000. Cells were fixed and permeabilized with methanol followed by acetone. The antibody was developed using Goat Anti-Mouse IgG, Cy3™ conjugate. Cells were counterstained with DAPI (blue) to stain nuclei.



Western blot - Anti-Alpha Skeletal Muscle Actin antibody [Alpha Sr-1] (ab28052)

Lane 1 : Anti-Alpha Skeletal Muscle Actin antibody [Alpha Sr-1] (ab28052) at 1/500 dilution

Lane 2 : Anti-Alpha Skeletal Muscle Actin antibody [Alpha Sr-1] (ab28052) at 1/1000 dilution

Lane 3 : Mouse Monoclonal Anti-Actin (a-Sarcomeric) antibody at 1/500 dilution

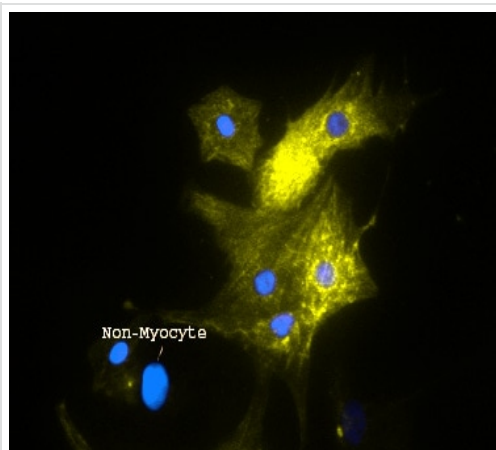
All lanes : Whole extract of Rat heart

Secondary

All lanes : Goat Anti-Mouse IgG-Peroxidase

Predicted band size: 42 kDa

chemiluminescent substrate.



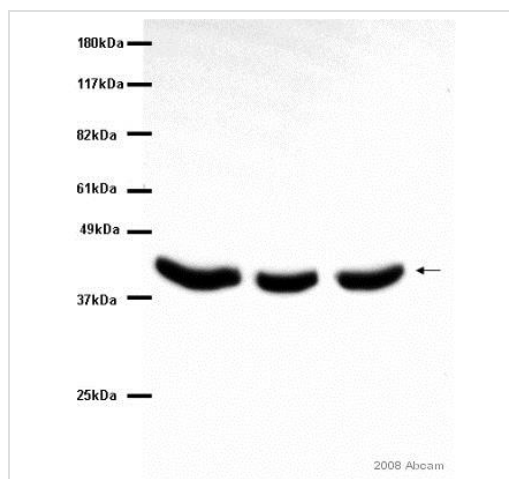
Immunocytochemistry - Anti-Alpha Skeletal Muscle

Actin antibody [Alpha Sr-1] (ab28052)

This image is courtesy of an Abreview submitted by Richard Patten.

ab28052 at dilution 1/200 staining alpha sarcomeric actin from rat neonatal cardiac myocytes by immunocytochemistry. The cells were fixed in paraformaldehyde, permeabilized in 0.1% NP40 and incubated with the antibody for 45 minutes. A Cy3® donkey anti-mouse antibody was used as the secondary antibody.

This image is courtesy of an Abreview submitted by Dr. Richard Patten on 12 May 2008.



Western blot - Anti-Alpha Skeletal Muscle Actin antibody [Alpha Sr-1] (ab28052)

This image is courtesy of an Abreview submitted by Richard Patten.

All lanes : Anti-Alpha Skeletal Muscle Actin antibody [Alpha Sr-1] (ab28052) at 1/200 dilution

All lanes : 40 µg rat neonatal cardiac myocytes (whole cell lysate)

Secondary

All lanes : HRP polymer conjugated donkey anti-mouse IgG at 1/1000

Developed using the ECL technique.

Performed under reducing conditions.

Predicted band size: 42 kDa

Observed band size: 42 kDa

Exposure time: 1 second

This image is courtesy of an Abreview submitted by Dr. Richard Patten on 12 May 2008.

Our Abpromise to you: Quality guaranteed and expert technical support

- Replacement or refund for products not performing as stated on the datasheet
- Valid for 12 months from date of delivery
- Response to your inquiry within 24 hours

- We provide support in Chinese, English, French, German, Japanese and Spanish
- Extensive multi-media technical resources to help you
- We investigate all quality concerns to ensure our products perform to the highest standards

If the product does not perform as described on this datasheet, we will offer a refund or replacement. For full details of the Abpromise, please visit <https://www.abcam.co.jp/abpromise> or contact our technical team.

Terms and conditions

- Guarantee only valid for products bought direct from Abcam or one of our authorized distributors