


Anti-alpha Internexin antibody [2E3] ab7654

★★★★★ [3 Abreviews](#) [3 References](#) [画像数 3](#)

製品の概要

製品名	Anti-alpha Internexin antibody [2E3]
製品の詳細	Mouse monoclonal [2E3] to alpha Internexin
由来種	Mouse
特異性	specifically recognizes a-internexin.
アプリケーション	適用あり: WB, Flow Cyt, ICC/IF
種交差性	交差種: Mouse, Rat, Cow, Human 交差が予測される動物種: Mammals 
免疫原	Recombinant full length protein corresponding to Rat alpha Internexin. (Purified from E. coli).
エピトープ	C-terminal non-helical extension of the protein.
ポジティブ・コントロール	WB: Rat and mouse brain and spinal cord lysates; Cow spinal cord lysate. Flow Cyt: SH-SY5Y cells.
特記事項	<p>The Life Science industry has been in the grips of a reproducibility crisis for a number of years. Abcam is leading the way in addressing this with our range of recombinant monoclonal antibodies and knockout edited cell lines for gold-standard validation. Please check that this product meets your needs before purchasing.</p> <p>If you have any questions, special requirements or concerns, please send us an inquiry and/or contact our Support team ahead of purchase. Recommended alternatives for this product can be found below, along with publications, customer reviews and Q&As</p>

製品の特性

製品の状態	Liquid
保存方法	Shipped at 4°C. Store at +4°C short term (1-2 weeks). Upon delivery aliquot. Store at -20°C or -80°C. Avoid freeze / thaw cycle.
バッファー	Preservative: 0.03% Sodium azide Constituents: PBS, 50% Glycerol
精製度	Tissue culture supernatant
ポリ/モノ	モノクローナル
クローン名	2E3
アイソタイプ	IgG1

アプリケーション

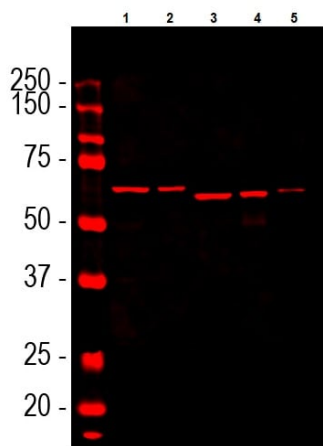
The Abpromise guarantee Abpromise保証は、次のテスト済みアプリケーションにおけるab7654の使用に適用されます
アプリケーションノートには、推奨の開始希釈率がありますが、適切な希釈率につきましてはご検討ください。

アプリケーション	Abreviews	特記事項
WB	★☆☆☆☆ (1)	1/100. Predicted molecular weight: 66 kDa.
Flow Cyt		1/100. <u>ab170190</u> - Mouse monoclonal IgG1, is suitable for use as an isotype control with this antibody.
ICC/IF		1/500.

ターゲット情報

機能	Class-IV neuronal intermediate filament that is able to self-assemble. It is involved in the morphogenesis of neurons. It may form an independent structural network without the involvement of other neurofilaments or it may cooperate with NF-L to form the filamentous backbone to which NF-M and NF-H attach to form the cross-bridges.
組織特異性	Found predominantly in adult CNS.
配列類似性	Belongs to the intermediate filament family.
発生段階	Expressed in brain as early as the 16th week of gestation, and increased rapidly and reached a steady state level by the 18th week of gestation.
翻訳後修飾	O-glycosylated. Phosphorylated upon DNA damage, probably by ATM or ATR.

画像



Western blot - Anti-alpha Internexin antibody [2E3]
(ab7654)

All lanes : Anti-alpha Internexin antibody [2E3] (ab7654) at
1/10000 dilution

Lane 1 : Rat brain lysate

Lane 2 : Rat spinal cord lysate

Lane 3 : Mouse brain lysate

Lane 4 : Mouse spinal cord lysate

Lane 5 : Cow spinal cord lysate

Predicted band size: 66 kDa



Western blot - Anti-alpha Internexin antibody [2E3]
(ab7654)

All lanes : Anti-alpha Internexin antibody [2E3] (ab7654)

Lanes 1-2 : Crude homogenate of rat facial nucleus at 3 days after
experimental injury

Lanes 3-4 : Crude homogenate of rat facial nucleus at 5 days after
experimental injury

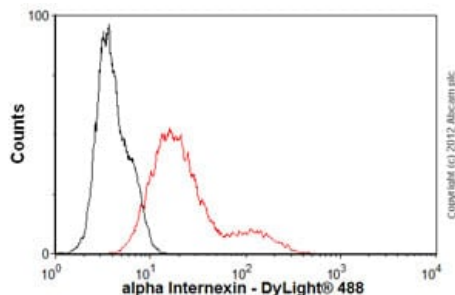
Lanes 5-6 : Crude homogenate of rat facial nucleus at 7 days after
experimental injury

Lanes 7-8 : Crude homogenate of rat facial nucleus at 14 days
after experimental injury

Lanes 9-10 : Crude homogenate of rat facial nucleus at 28 days
after experimental injury

Predicted band size: 66 kDa

Observed band size: 66 kDa



Flow Cytometry - Anti-alpha Internexin antibody
[2E3] (ab7654)

Overlay histogram showing SH-SY5Y cells stained with ab7654 (red line). The cells were fixed with 4% paraformaldehyde (10 min) and then permeabilized with 0.1% PBS-Tween for 20 min. The cells were then incubated in 1x PBS / 10% normal goat serum / 0.3M glycine to block non-specific protein-protein interactions followed by the antibody (ab7654, 1/100 dilution) for 30 min at 22°C. The secondary antibody used was DyLight® 488 goat anti-mouse IgG (H+L) ([ab96879](#)) at 1/500 dilution for 30 min at 22°C. Isotype control antibody (black line) was mouse IgG1 [ICIGG1] ([ab91353](#), 2µg/1x10⁶ cells) used under the same conditions. Acquisition of >5,000 events was performed. This antibody gave a positive signal in SH-SY5Y cells fixed with 80% methanol (5 min)/permeabilized

with 0.1% PBS-Tween for 20 min used under the same conditions.

Please note: All products are "FOR RESEARCH USE ONLY. NOT FOR USE IN DIAGNOSTIC PROCEDURES"

Our Abpromise to you: Quality guaranteed and expert technical support

- Replacement or refund for products not performing as stated on the datasheet
- Valid for 12 months from date of delivery
- Response to your inquiry within 24 hours

- We provide support in Chinese, English, French, German, Japanese and Spanish
- Extensive multi-media technical resources to help you
- We investigate all quality concerns to ensure our products perform to the highest standards

If the product does not perform as described on this datasheet, we will offer a refund or replacement. For full details of the Abpromise, please visit <https://www.abcam.co.jp/abpromise> or contact our technical team.

Terms and conditions

- Guarantee only valid for products bought direct from Abcam or one of our authorized distributors