


Anti-Alpha B Crystallin antibody [SP288] ab226839

リコンビナント **RabMAb**

1 References 画像数 7

製品の概要

製品名	Anti-Alpha B Crystallin antibody [SP288]
製品の詳細	Rabbit monoclonal [SP288] to Alpha B Crystallin
由来種	Rabbit
アプリケーション	適用あり: IHC-P
種交差性	交差種: Human 交差が予測される動物種: Mouse, Rat, Cow, Pig 
免疫原	Synthetic peptide. This information is proprietary to Abcam and/or its suppliers.
ポジティブ・コントロール	IHC-P: Human renal cell carcinoma, melanoma, kidney, cerebellum, spinal cord and heart tissues.
特記事項	This product is FOR RESEARCH USE ONLY. For commercial use, please contact partnerships@abcam.com .

製品の特性

製品の状態	Liquid
保存方法	Shipped at 4°C. Store at +4°C short term (1-2 weeks). Upon delivery aliquot. Store at -20°C long term. Avoid freeze / thaw cycle.
バッファー	pH: 7.60 Preservative: 0.1% Sodium azide Constituents: PBS, 1% BSA
精製度	Protein A/G purified
特記事項(精製)	Purified from TCS by protein A/G.
ポリ/モノ	モノクローナル
クローン名	SP288
アイソタイプ	IgG

アプリケーション

The Abpromise guarantee Abpromise保証は、次のテスト済みアプリケーションにおけるab226839の使用に適用されます

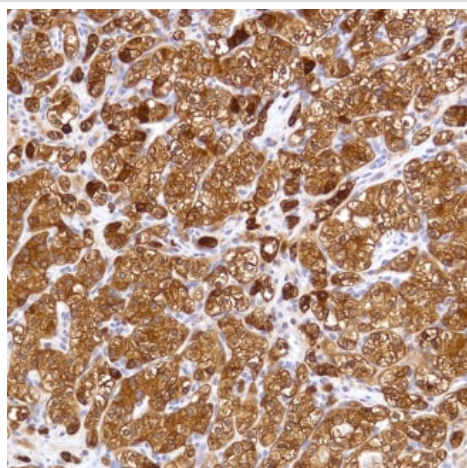
アプリケーションノートには、推奨の開始希釈率がありますが、適切な希釈率につきましてはご確認ください。

アプリケーション	Abreviews	特記事項
IHC-P		1/100. Perform heat mediated antigen retrieval with citrate buffer pH 6 before commencing with IHC staining protocol. Primary incubation for 10 minutes at room temperature.

ターゲット情報

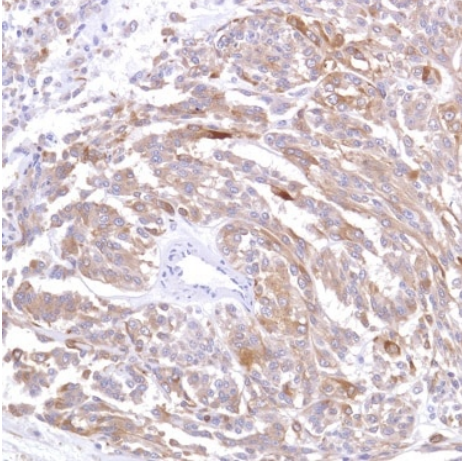
機能	May contribute to the transparency and refractive index of the lens.
組織特異性	Lens as well as other tissues.
関連疾患	Defects in CRYAB are the cause of myofibrillar alpha-B crystallin-related (MFM-CRYAB) [MIM:608810]. A neuromuscular disorder that results in weakness of the proximal and distal limb muscles, weakness of the neck, velopharynx and trunk muscles, hypertrophic cardiomyopathy, and cataract in a subset of patients.
配列類似性	Belongs to the small heat shock protein (HSP20) family.
細胞内局在	Cytoplasm. Nucleus. Translocates to the nucleus during heat shock and resides in sub-nuclear structures known as SC35 speckles or nuclear splicing speckles.

画像



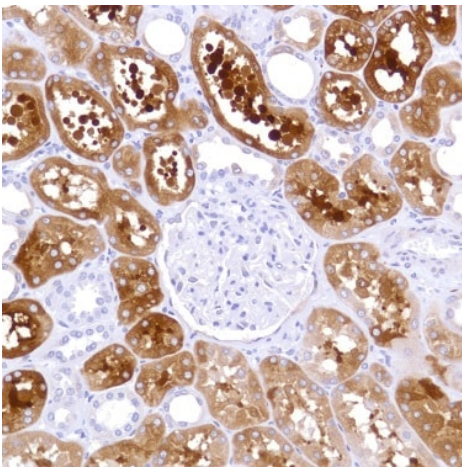
Formalin-fixed, paraffin-embedded human renal cell carcinoma tissue stained for Alpha B Crystallin using ab226839 at 1/100 dilution in immunohistochemical analysis.

Immunohistochemistry (Formalin/PFA-fixed paraffin-embedded sections) - Anti-Alpha B Crystallin antibody [SP288] (ab226839)



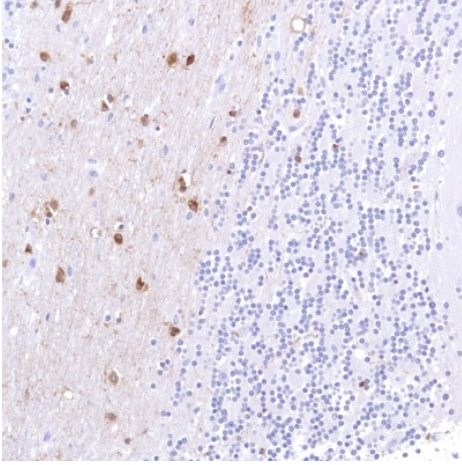
Immunohistochemistry (Formalin/PFA-fixed paraffin-embedded sections) - Anti-Alpha B Crystallin antibody [SP288] (ab226839)

Formalin-fixed, paraffin-embedded human melanoma tissue stained for Alpha B Crystallin using ab226839 at 1/100 dilution in immunohistochemical analysis.



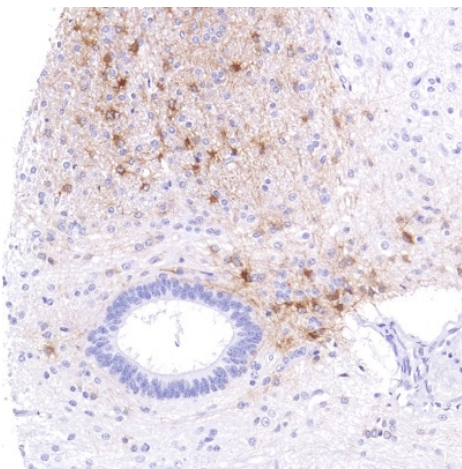
Immunohistochemistry (Formalin/PFA-fixed paraffin-embedded sections) - Anti-Alpha B Crystallin antibody [SP288] (ab226839)

Formalin-fixed, paraffin-embedded human kidney tissue stained for Alpha B Crystallin using ab226839 at 1/100 dilution in immunohistochemical analysis.



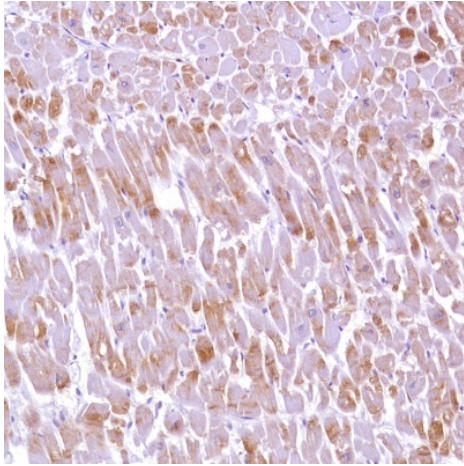
Immunohistochemistry (Formalin/PFA-fixed paraffin-embedded sections) - Anti-Alpha B Crystallin antibody [SP288] (ab226839)

Formalin-fixed, paraffin-embedded human cerebellum tissue stained for Alpha B Crystallin using ab226839 at 1/100 dilution in immunohistochemical analysis.



Immunohistochemistry (Formalin/PFA-fixed paraffin-embedded sections) - Anti-Alpha B Crystallin antibody [SP288] (ab226839)

Formalin-fixed, paraffin-embedded human spinal cord tissue stained for Alpha B Crystallin using ab226839 at 1/100 dilution in immunohistochemical analysis.



Formalin-fixed, paraffin-embedded human heart tissue stained for Alpha B Crystallin using ab226839 at 1/100 dilution in immunohistochemical analysis.

Immunohistochemistry (Formalin/PFA-fixed paraffin-embedded sections) - Anti-Alpha B Crystallin antibody [SP288] (ab226839)

Why choose a recombinant antibody?



Research with confidence
Consistent and reproducible results



Long-term and scalable supply
Recombinant technology



Success from the first experiment
Confirmed specificity



Ethical standards compliant
Animal-free production

Anti-Alpha B Crystallin antibody [SP288] (ab226839)

Please note: All products are "FOR RESEARCH USE ONLY. NOT FOR USE IN DIAGNOSTIC PROCEDURES"

Our Abpromise to you: Quality guaranteed and expert technical support

- Replacement or refund for products not performing as stated on the datasheet
- Valid for 12 months from date of delivery
- Response to your inquiry within 24 hours

- We provide support in Chinese, English, French, German, Japanese and Spanish
- Extensive multi-media technical resources to help you
- We investigate all quality concerns to ensure our products perform to the highest standards

If the product does not perform as described on this datasheet, we will offer a refund or replacement. For full details of the Abpromise, please visit <https://www.abcam.co.jp/abpromise> or contact our technical team.

Terms and conditions

- Guarantee only valid for products bought direct from Abcam or one of our authorized distributors