




Anti-Alpha B Crystallin antibody ab13497

★★★★★ [4 Abreviews](#) [19 References](#) [画像数 5](#)

製品の概要

製品名	Anti-Alpha B Crystallin antibody
製品の詳細	Rabbit polyclonal to Alpha B Crystallin
由来種	Rabbit
特異性	Does not cross-react with α A-crystallin.
アプリケーション	適用あり: IP, WB, ICC, IHC-Fr, IHC-P, ICC/IF
種交差性	交差種: Mouse, Rat, Chicken, Cow, Human, Pig 交差が予測される動物種: Rabbit, Hamster 
免疫原	Synthetic peptide: REEKPAVTAAPKK conjugated to KLH, corresponding to amino acids 163-175 of Human alpha B Crystallin.  Run BLAST with  Run BLAST with
ポジティブ・コントロール	ICC: HeLa. (Heat shocked). WB: A431, HCT116, HeLa, HepG2, HEK293, HUVEC, Jurkat, MCF7, PC3 , and Rat brain cell lysate.
特記事項	For maximum product recovery, after thawing, centrifuge the product vial before removing cap The Life Science industry has been in the grips of a reproducibility crisis for a number of years. Abcam is leading the way in addressing this with our range of recombinant monoclonal antibodies and knockout edited cell lines for gold-standard validation. Please check that this product meets your needs before purchasing. If you have any questions, special requirements or concerns, please send us an inquiry and/or contact our Support team ahead of purchase. Recommended alternatives for this product can be found below, along with publications, customer reviews and Q&As

製品の特性

製品の状態	Liquid
保存方法	Shipped at 4°C. Store at +4°C short term (1-2 weeks). Upon delivery aliquot. Store at -20°C or -80°C. Avoid freeze / thaw cycle.
バッファー	Constituent: Whole serum
精製度	Affinity purified
ポリ/モノ	ポリクローナル

アプリケーション

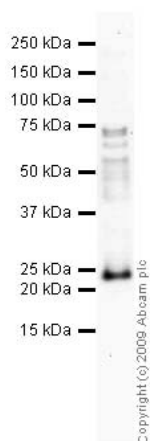
The Abpromise guarantee **Abpromise保証は、**次のテスト済みアプリケーションにおけるab13497の使用に適用されます
アプリケーションノートには、推奨の開始希釈率がありますが、適切な希釈率につきましてはご検討ください。

アプリケーション	Abreviews	特記事項
IP		Use at an assay dependent concentration.
WB	★★★★★ (3)	1/1000 - 1/2000. Detects a band of approximately 22 kDa (predicted molecular weight: 20 kDa).
ICC		Use at an assay dependent concentration.
IHC-Fr		Use at an assay dependent concentration.
IHC-P	★★★★☆ (1)	Use at an assay dependent concentration.
ICC/IF		1/120.

ターゲット情報

機能	May contribute to the transparency and refractive index of the lens.
組織特異性	Lens as well as other tissues.
関連疾患	Defects in CRYAB are the cause of myofibrillar alpha-B crystallin-related (MFM-CRYAB) [MIM:608810]. A neuromuscular disorder that results in weakness of the proximal and distal limb muscles, weakness of the neck, velopharynx and trunk muscles, hypertrophic cardiomyopathy, and cataract in a subset of patients.
配列類似性	Belongs to the small heat shock protein (HSP20) family.
細胞内局在	Cytoplasm. Nucleus. Translocates to the nucleus during heat shock and resides in sub-nuclear structures known as SC35 speckles or nuclear splicing speckles.

画像



Western blot - Anti-Alpha B Crystallin antibody (ab13497)

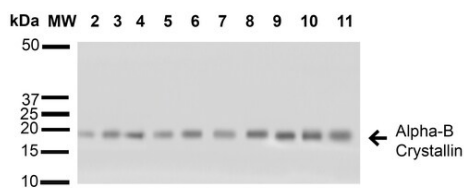
Anti-Alpha B Crystallin antibody (ab13497) at 1/1000 dilution + Human spinal cord tissue lysate - total protein (**ab29188**) at 10 µg

Secondary

Goat polyclonal to Rabbit IgG - H&L - Pre-Adsorbed (HRP) at 1/3000 dilution

Predicted band size: 20 kDa

Observed band size: 22 kDa



Western blot - Anti-Alpha B Crystallin antibody (ab13497)

Western blot analysis of Human A431, HCT116, HeLa, HepG2, HEK293, HUVEC, Jurkat, MCF7, PC3 and T98G cell lysates showing detection of ~22 kDa Alpha B Crystallin protein using Rabbit Anti-Alpha B Crystallin Polyclonal Antibody (ab13497).

Lane 1: Molecular Weight Ladder (MW).

Lane 2: A431 cell lysates.

Lane 3: HCT116 cell lysates.

Lane 4: HeLa cell lysates.

Lane 5: HepG2 cell lysates.

Lane 6: HEK293 cell lysates.

Lane 7: HUVEC cell lysates.

Lane 8: Jurkat cell lysates.

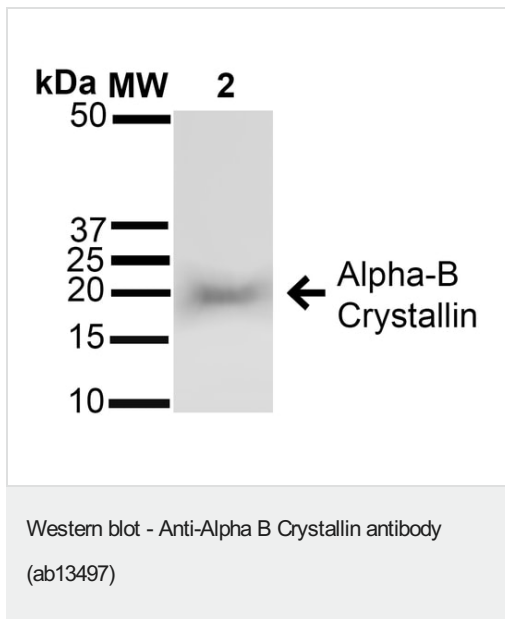
Lane 9: MCF7 cell lysates.

Lane 10: PC3 cell lysates.

Lane 11: T98G cell lysates.

Load: 15 µg. Block: 5% Skim Milk in 1X TBST. Primary Antibody: Rabbit Anti-Alpha B Crystallin Polyclonal Antibody (ab13497) at

1/1000 dilution for 60 min at RT. Secondary Antibody: Goat Anti-Rabbit IgG: HRP at 1/1000 dilution for 60 min at RT. Color Development: ECL solution for 6 min in RT. Predicted/Observed Size: ~22 kDa.

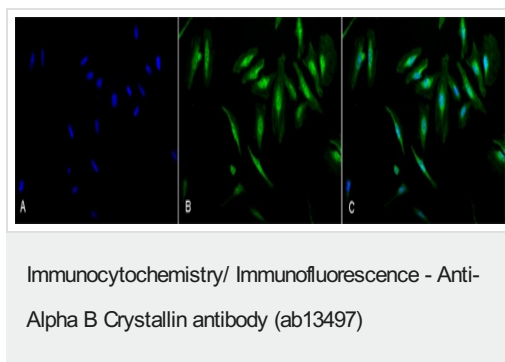


Western blot analysis of Rat Brain cell lysates showing detection of ~22 kDa Alpha B Crystallin protein using Rabbit Anti-Alpha B Crystallin Polyclonal Antibody (ab13497).

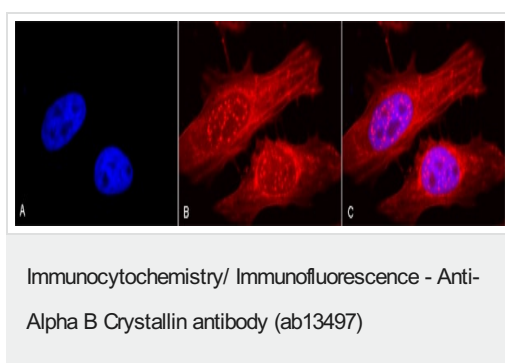
Lane 1: Molecular Weight Ladder (MW).

Lane 2: Rat Brain cell lysates.

Load: 15 µg. Block: 5% Skim Milk in 1X TBST. Primary Antibody: Rabbit Anti-Alpha B Crystallin Polyclonal Antibody (ab13497) at 1/1000 dilution for 60 min at RT. Secondary Antibody: Goat Anti-Rabbit IgG: HRP at 1/1000 dilution for 60 min at RT. Color Development: ECL solution for 6 min in RT. Predicted/Observed Size: ~22 kDa.



Immunofluorescent analysis of 2% paraformaldehyde fixed Heat Shocked (at 42°C for 1h) Cervical cancer cell line (HeLa) for 20min at RT, labelling Alpha B Crystallin with ab13497 at 1/120 dilution for 12 hours at 4°C, followed by secondary antibody Goat Anti-Rabbit (FITC) (Green) at 1/200 dilution for 2 hours at RT. Counterstain: DAPI (blue) nuclear stain at 1/40000 dilution for 2 hours at RT. Image showing actin filament bundles, nuclear splicing speckles, and Exosome staining. (A) DAPI (blue) nuclear stain. (B) Anti-Alpha B Crystallin Antibody (green). (C) Composite image.



Immunofluorescent analysis of 2% paraformaldehyde fixed Heat Shocked (at 42°C for 1h) Cervical cancer cell line (HeLa) for 20min at RT, labelling Alpha B Crystallin with ab13497 at 1/120 dilution for 12 hours at 4°C, followed by secondary antibody Goat Anti-Rabbit (APC) (Red) at 1/200 dilution for 2 hours at RT. Counterstain: DAPI (blue) nuclear stain at 1/40000 dilution for 2 hours at RT. Image showing actin filament bundles, nuclear splicing speckles, and Exosome staining. (A) DAPI (blue) nuclear stain. (B) Anti-Alpha B Crystallin Antibody (Red). (C) Composite image.

Please note: All products are "FOR RESEARCH USE ONLY. NOT FOR USE IN DIAGNOSTIC PROCEDURES"

Our Abpromise to you: Quality guaranteed and expert technical support

-
- Replacement or refund for products not performing as stated on the datasheet
 - Valid for 12 months from date of delivery
 - Response to your inquiry within 24 hours

 - We provide support in Chinese, English, French, German, Japanese and Spanish
 - Extensive multi-media technical resources to help you
 - We investigate all quality concerns to ensure our products perform to the highest standards

If the product does not perform as described on this datasheet, we will offer a refund or replacement. For full details of the Abpromise, please visit <https://www.abcam.co.jp/abpromise> or contact our technical team.

Terms and conditions

- Guarantee only valid for products bought direct from Abcam or one of our authorized distributors