

Anti-alpha Adducin antibody - N-terminal ab151474

★★★★★ 1 Abreviews 画像数 3

医薬用外劇物

製品の概要

製品名	Anti-alpha Adducin antibody - N-terminal
製品の詳細	Rabbit polyclonal to alpha Adducin - N-terminal
由来種	Rabbit
アプリケーション	適用あり: WB, IHC-P
種交差性	交差種: Mouse, Human 交差が予測される動物種: Rat, Chicken, Cow, Xenopus laevis, Zebrafish, Xenopus tropicalis
免疫原	Recombinant fragment corresponding to the N terminal amino acids 1-228 of Human alpha Adducin protein (P35611). Run BLAST with ExPASy Run BLAST with NCBI
ポジティブ・コントロール	WB: 293T, A431, H1299, HeLa, Molt-4, Raji and mouse liver lysates. IHC: SG xenograft.
特記事項	The Life Science industry has been in the grips of a reproducibility crisis for a number of years. Abcam is leading the way in addressing this with our range of recombinant monoclonal antibodies and knockout edited cell lines for gold-standard validation. Please check that this product meets your needs before purchasing. If you have any questions, special requirements or concerns, please send us an inquiry and/or contact our Support team ahead of purchase. Recommended alternatives for this product can be found below, along with publications, customer reviews and Q&As

製品の特性

製品の状態	Liquid
保存方法	Shipped at 4°C. Upon delivery aliquot and store at -20°C or -80°C. Avoid repeated freeze / thaw cycles.
バッファー	pH: 7.00 Preservative: 0.01% Thimerosal (merthiolate) Constituents: 1.21% Tris, 0.75% Glycine, 10% Glycerol (glycerin, glycerine)
精製度	Immunogen affinity purified
ポリモノ	ポリクローナル
アイソタイプ	IgG

アプリケーション

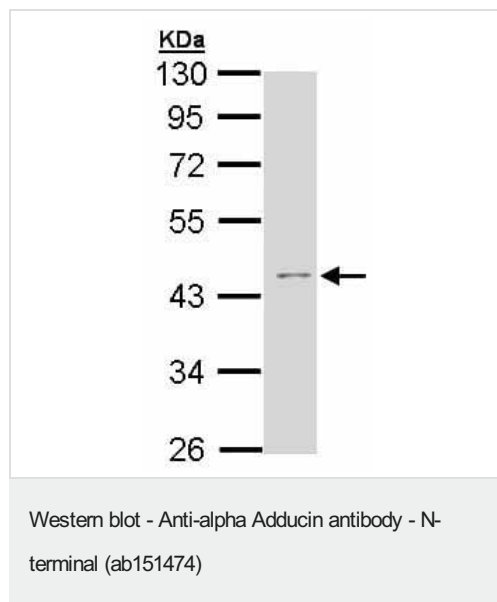
The Abpromise guarantee Abpromise保証は、次のテスト済みアプリケーションにおけるab151474の使用に適用されます
アプリケーションノートには、推奨の開始希釈率がありますが、適切な希釈率につきましてはご検討ください。

アプリケーション	Abreviews	特記事項
WB		1/500 - 1/3000. Detects a band of approximately 44 kDa (predicted molecular weight: 81 kDa).
IHC-P		1/100 - 1/1000. Perform heat mediated antigen retrieval with citrate buffer pH 6 before commencing with IHC staining protocol.

ターゲット情報

機能	Membrane-cytoskeleton-associated protein that promotes the assembly of the spectrin-actin network. Binds to calmodulin.
組織特異性	Expressed in all tissues. Found in much higher levels in reticulocytes than the beta subunit.
配列類似性	Belongs to the aldolase class II family. Adducin subfamily.
ドメイン	Each subunit is comprised of three regions: a NH ₂ -terminal protease-resistant globular head region, a short connecting subdomain, and a protease-sensitive tail region.
細胞内局在	Cytoplasm > cytoskeleton. Cell membrane.

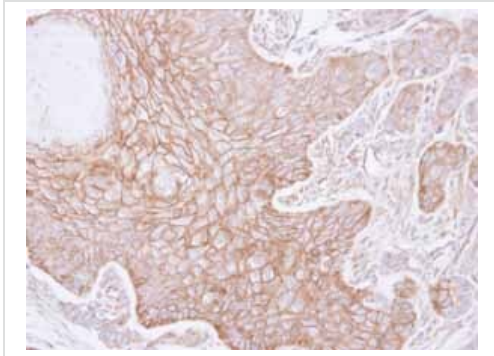
画像



Anti-alpha Adducin antibody - N-terminal (ab151474) at 1/1000 dilution + A431 whole cell lysate at 30 µg

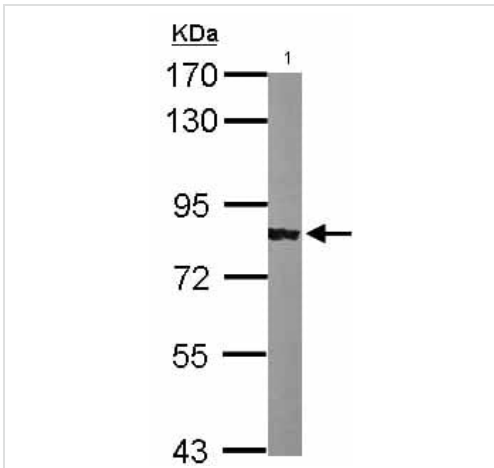
Predicted band size: 81 kDa

10% SDS PAGE



Immunohistochemical analysis of paraffin-embedded SG xenograft labeling alpha Adducin with ab151474 at 1/100.

Immunohistochemistry (Formalin/PFA-fixed paraffin-embedded sections) - Anti-alpha Adducin antibody - N-terminal (ab151474)



Anti-alpha Adducin antibody - N-terminal (ab151474) at 1/1000 dilution + Mouse liver whole cell lysate at 50 µg

Predicted band size: 81 kDa

7.5% SDS PAGE

Western blot - Anti-alpha Adducin antibody - N-terminal (ab151474)

Please note: All products are "FOR RESEARCH USE ONLY. NOT FOR USE IN DIAGNOSTIC PROCEDURES"

Our Abpromise to you: Quality guaranteed and expert technical support

- Replacement or refund for products not performing as stated on the datasheet
- Valid for 12 months from date of delivery
- Response to your inquiry within 24 hours
- We provide support in Chinese, English, French, German, Japanese and Spanish
- Extensive multi-media technical resources to help you
- We investigate all quality concerns to ensure our products perform to the highest standards

If the product does not perform as described on this datasheet, we will offer a refund or replacement. For full details of the Abpromise, please visit <https://www.abcam.co.jp/abpromise> or contact our technical team.

Terms and conditions

- Guarantee only valid for products bought direct from Abcam or one of our authorized distributors