


Anti-alpha Adaptin antibody [AP6] ab2730

★★★★☆ [11 Abreviews](#) [28 References](#) [画像数 5](#)

製品の概要

製品名	Anti-alpha Adaptin antibody [AP6]
製品の詳細	Mouse monoclonal [AP6] to alpha Adaptin
由来種	Mouse
特異性	Detects assembly polypeptide 2 (AP2) It recognizes the products of both alpha-adaptin genes, alpha A and alpha C as well as an alternatively spliced isoform of alpha A found in neurons.
アプリケーション	適用あり: ICC/IF, Flow Cyt
種交差性	交差種: Mouse, Human 交差が予測される動物種: Non human primates 
免疫原	Full length native protein (purified) corresponding to alpha Adaptin. Purified adaptors.
特記事項	<p>The Life Science industry has been in the grips of a reproducibility crisis for a number of years. Abcam is leading the way in addressing this with our range of recombinant monoclonal antibodies and knockout edited cell lines for gold-standard validation. Please check that this product meets your needs before purchasing.</p> <p>If you have any questions, special requirements or concerns, please send us an inquiry and/or contact our Support team ahead of purchase. Recommended alternatives for this product can be found below, along with publications, customer reviews and Q&As</p>

製品の特性

製品の状態	Liquid
保存方法	Shipped at 4°C. Store at +4°C short term (1-2 weeks). Upon delivery aliquot. Store at -20°C or -80°C. Avoid freeze / thaw cycle.
バッファー	Preservative: 0.05% Sodium azide Constituent: PBS
精製度	Affinity purified
ポリ/モノ	モノクローナル
クローン名	AP6
アイソタイプ	IgG1

The Abpromise guarantee **Abpromise保証は、** 次のテスト済みアプリケーションにおけるab2730の使用に適用されます
 アプリケーションノートには、推奨の開始希釈率がありますが、適切な希釈率につきましてはご検討ください。

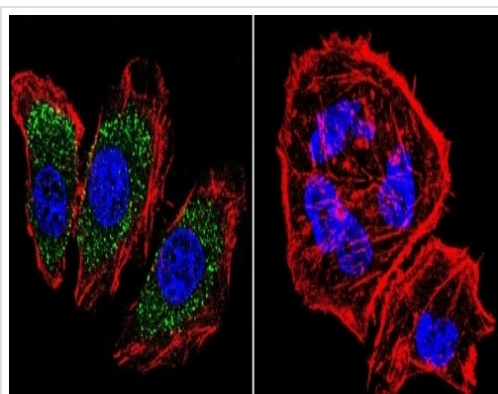
アプリケーション	Abreviews	特記事項
ICC/IF	★★★★★ (4)	Use a concentration of 5 µg/ml.
Flow Cyt		Use 1 µg for 10 ⁶ cells. ab170190 - Mouse monoclonal IgG1, is suitable for use as an isotype control with this antibody.

ターゲット情報

関連性 Clathrin mediated endocytosis is the pathway by which many receptors for nutrients and hormones are internalized to be recycled or down regulated. During formation of clathrin coated membranes, clathrin co assembles with heterotetrameric molecules known as assembly polypeptides (APs) or adaptors which form a layer of protein coat between the clathrin lattice and the membrane. There are two characterized adaptors AP1 and AP2. AP1 is associated with clathrin coated vesicles at the trans Golgi network and AP2 is associated with the endocytic clathrin coated vesicles at the plasma membrane and has been shown to specifically interact with Shc and EGF receptor. AP2 is composed of four subunits, two separate 100 kDa gene products with similar domain structures (alpha and beta adaptin) and a 50 and 17 kDa subunit. There are two alpha adaptin genes, alpha A and alpha C which have a tissue specific pattern of expression.

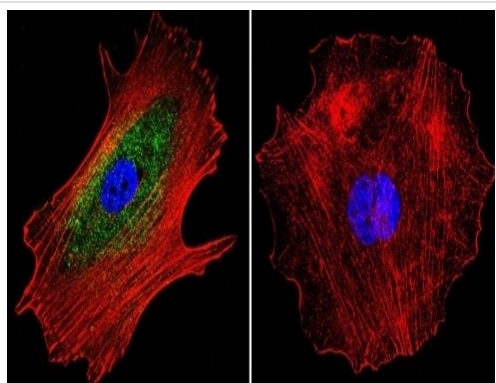
細胞内局在 Cytoplasmic

画像



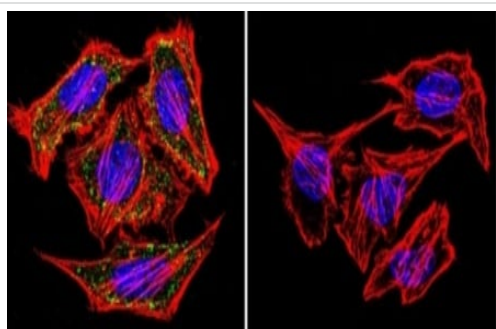
Immunofluorescent analysis of alpha Adaptin using alpha Adaptin Monoclonal Antibody (AP6) (ab2730) shows staining in U251 Cells. alpha Adaptin (green) F-Actin staining with Phalloidin (red) and nuclei with DAPI (blue) is shown. Cells were grown on chamber slides and fixed with formaldehyde prior to staining. Cells were probed without (control) or with an antibody recognizing alpha Adaptin (ab2730) at a dilution of 1:20 over night at 4C and incubated with a DyLight-488 conjugated secondary antibody. Images were taken at 60X magnification.

Immunocytochemistry/ Immunofluorescence - Anti-alpha Adaptin antibody [AP6] (ab2730)



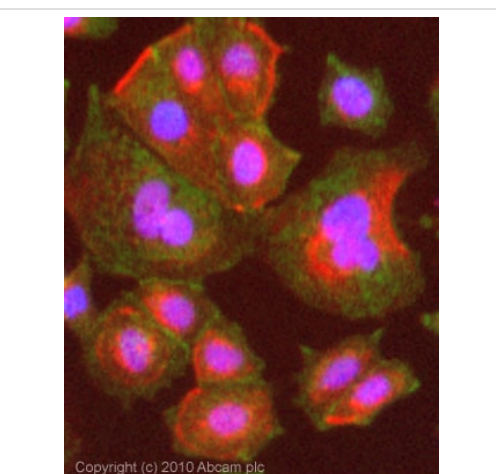
Immunocytochemistry/ Immunofluorescence - Anti-alpha Adaptin antibody [AP6] (ab2730)

Immunofluorescent analysis of alpha Adaptin using alpha Adaptin Monoclonal Antibody (AP6) (**ab2720**) shows staining in MCF-7 Cells. alpha Adaptin (green) F-Actin staining with Phalloidin (red) and nuclei with DAPI (blue) is shown. Cells were grown on chamber slides and fixed with formaldehyde prior to staining. Cells were probed without (control) or with an antibody recognizing alpha Adaptin (ab2730) at a dilution of 1:20 over night at 4 C and incubated with a DyLight-488 conjugated secondary antibody. Images were taken at 60X magnification.



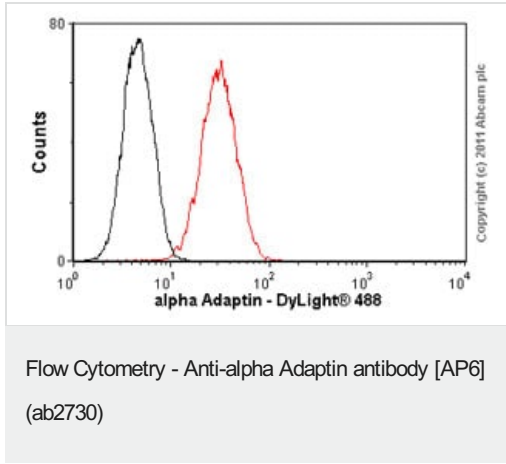
Immunocytochemistry/ Immunofluorescence - Anti-alpha Adaptin antibody [AP6] (ab2730)

Immunofluorescent analysis of alpha Adaptin using alpha Adaptin Monoclonal Antibody (AP6) (ab2730) shows staining in HeLa Cells. alpha Adaptin (green) F-Actin staining with Phalloidin (red) and nuclei with DAPI (blue) is shown. Cells were grown on chamber slides and fixed with formaldehyde prior to staining. Cells were probed without (control) or with an antibody recognizing alpha Adaptin (**ab2720**) at a dilution of 1:20 over night at 4 C and incubated with a DyLight-488 conjugated secondary antibody. Images were taken at 60X magnification.



Immunocytochemistry/ Immunofluorescence - Anti-alpha Adaptin antibody [AP6] (ab2730)

ICC/IF image of ab2730 stained MCF7 cells. The cells were 4% formaldehyde fixed (10 min) and then incubated in 1%BSA / 10% normal goat serum / 0.3M glycine in 0.1% PBS-Tween for 1h to permeabilise the cells and block non-specific protein-protein interactions. The cells were then incubated with the antibody (ab2730, 5µg/ml) overnight at +4°C. The secondary antibody (green) was Alexa Fluor® 488 goat anti-mouse IgG (H+L) used at a 1/1000 dilution for 1h. Alexa Fluor® 594 WGA was used to label plasma membranes (red) at a 1/200 dilution for 1h. DAPI was used to stain the cell nuclei (blue) at a concentration of 1.43µM.



Overlay histogram showing MCF7 cells stained with ab2730 (red line). The cells were fixed with 4% paraformaldehyde (10 min) and then permeabilized with 0.1% PBS-Tween for 20 min. The cells were then incubated in 1x PBS / 10% normal goat serum / 0.3M glycine to block non-specific protein-protein interactions followed by the antibody (ab2730, 1µg/1x10⁶ cells) for 30 min at 22°C. The secondary antibody used was a goat **anti-mouse DyLight® 488** (IgG; H+L) (**ab96879**) at 1/500 dilution for 30 min at 22°C. Isotype control antibody (black line) was mouse IgG1 [ICIGG1] (**ab91353**, 2µg/1x10⁶ cells) used under the same conditions. Acquisition of >5,000 events was performed.

Please note: All products are "FOR RESEARCH USE ONLY. NOT FOR USE IN DIAGNOSTIC PROCEDURES"

Our Abpromise to you: Quality guaranteed and expert technical support

- Replacement or refund for products not performing as stated on the datasheet
- Valid for 12 months from date of delivery
- Response to your inquiry within 24 hours
- We provide support in Chinese, English, French, German, Japanese and Spanish
- Extensive multi-media technical resources to help you
- We investigate all quality concerns to ensure our products perform to the highest standards

If the product does not perform as described on this datasheet, we will offer a refund or replacement. For full details of the Abpromise, please visit <https://www.abcam.co.jp/abpromise> or contact our technical team.

Terms and conditions

- Guarantee only valid for products bought direct from Abcam or one of our authorized distributors